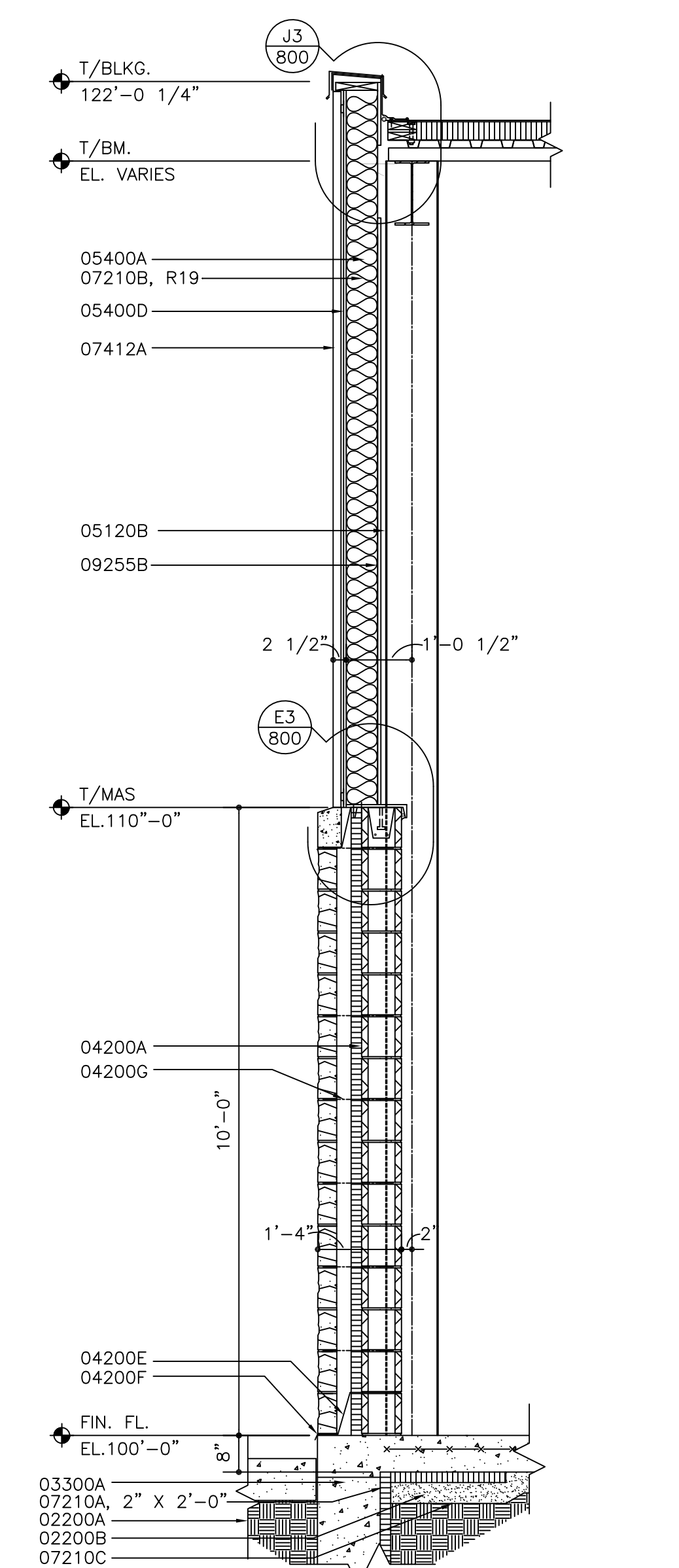


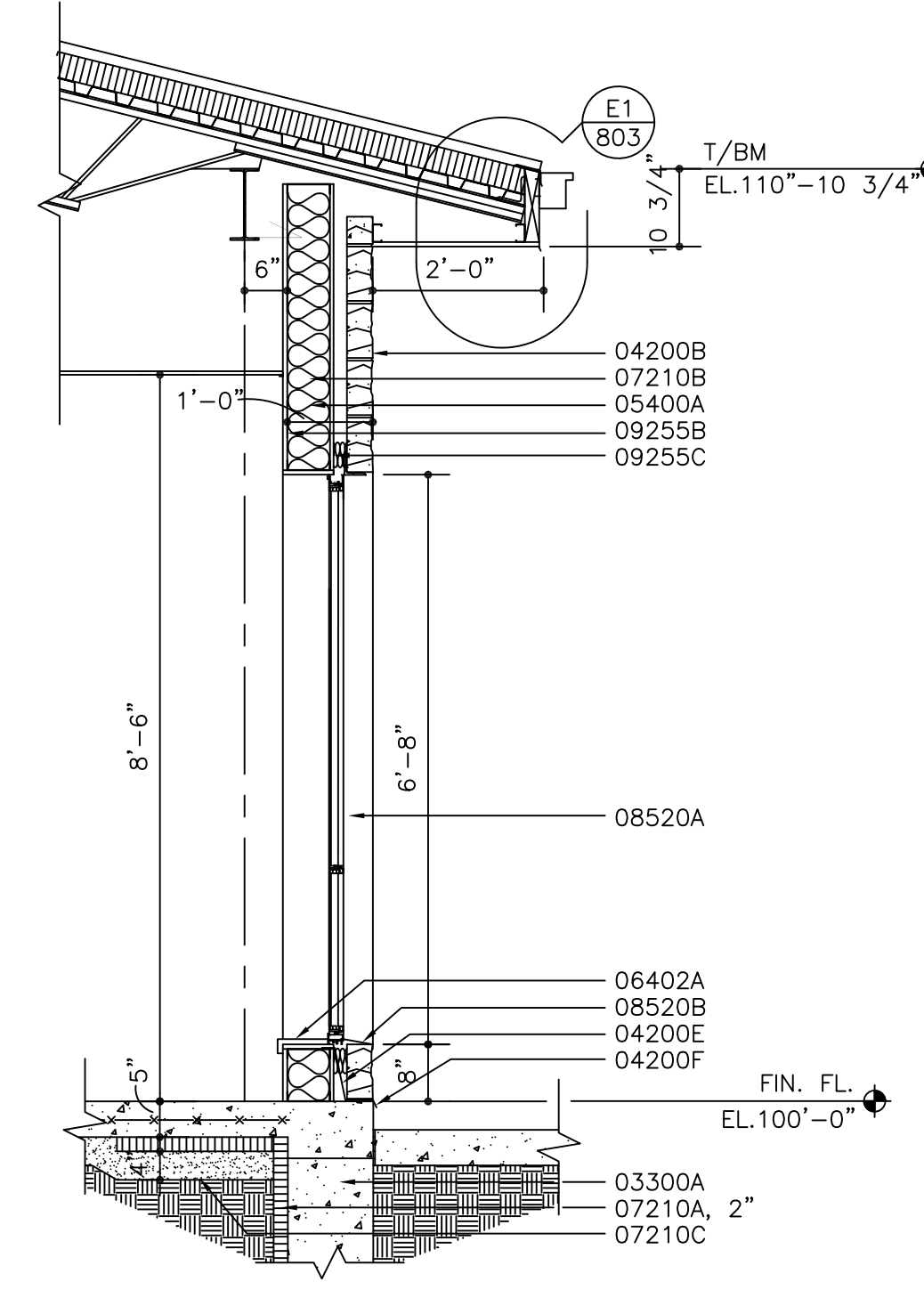
TOPEKA METRO

**REQUEST FOR BIDS
Electric Van Charging Infrastructure and Installation
TO-25-07**

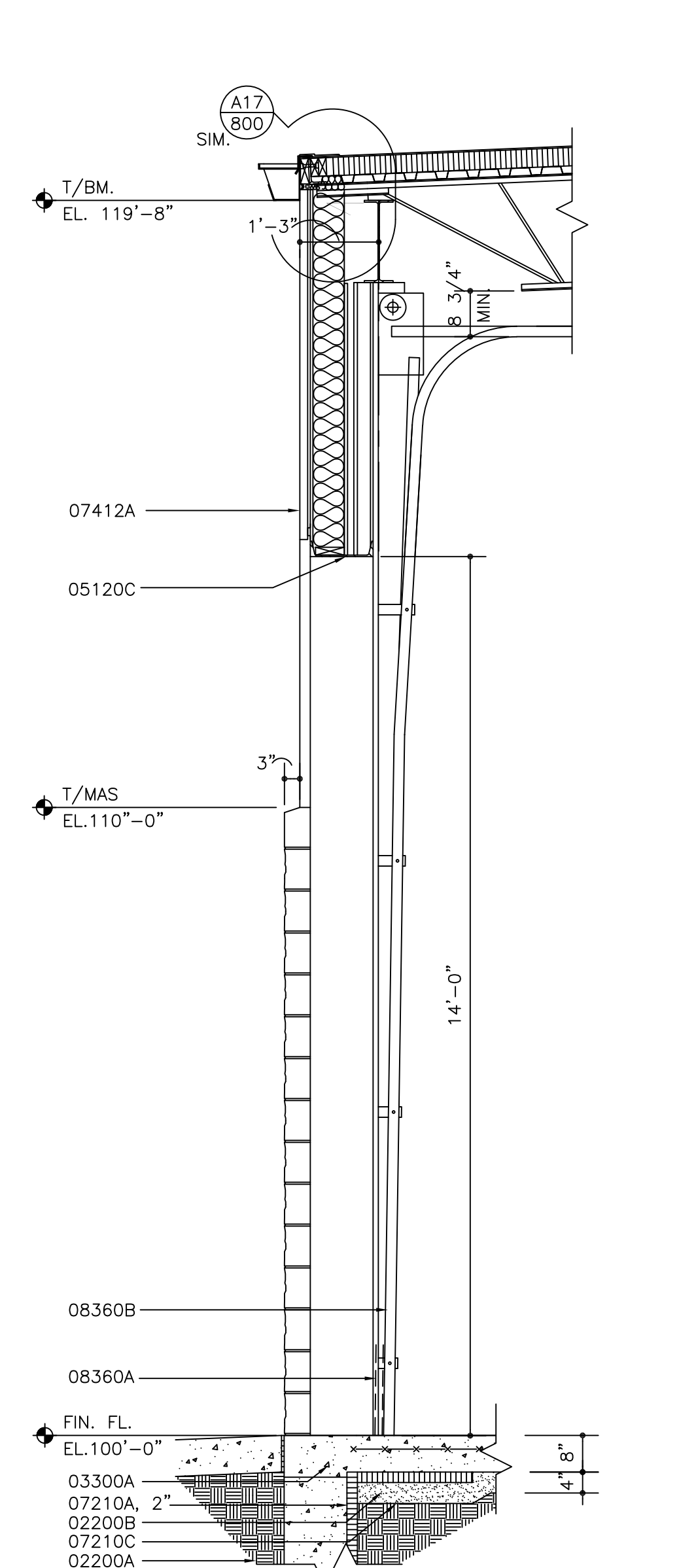
**Appendix III
Architectural Specifications**



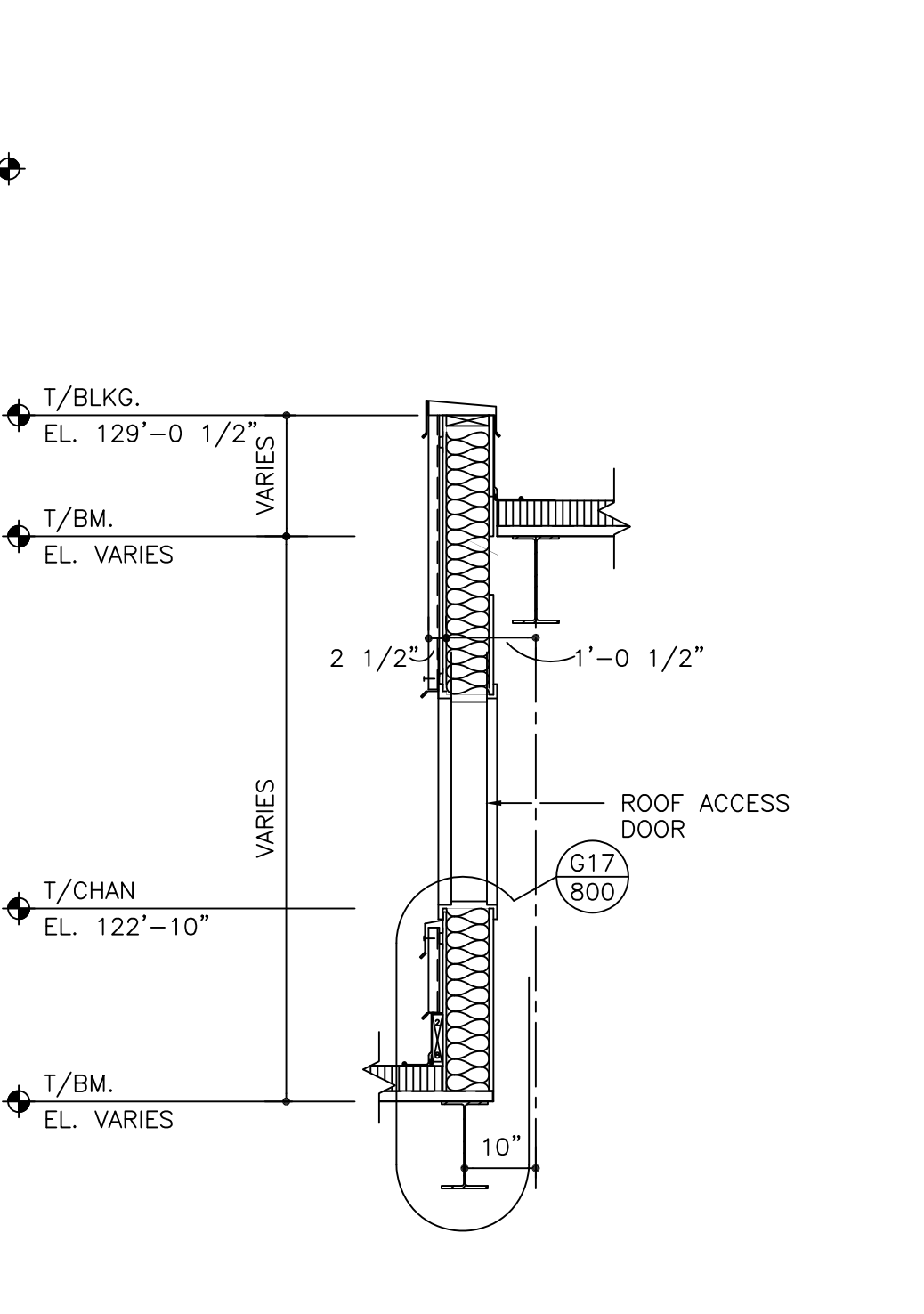
F1 SECTION WEST WALL @ WORK BAY # 1
SCALE: 1/2"=1'-0"



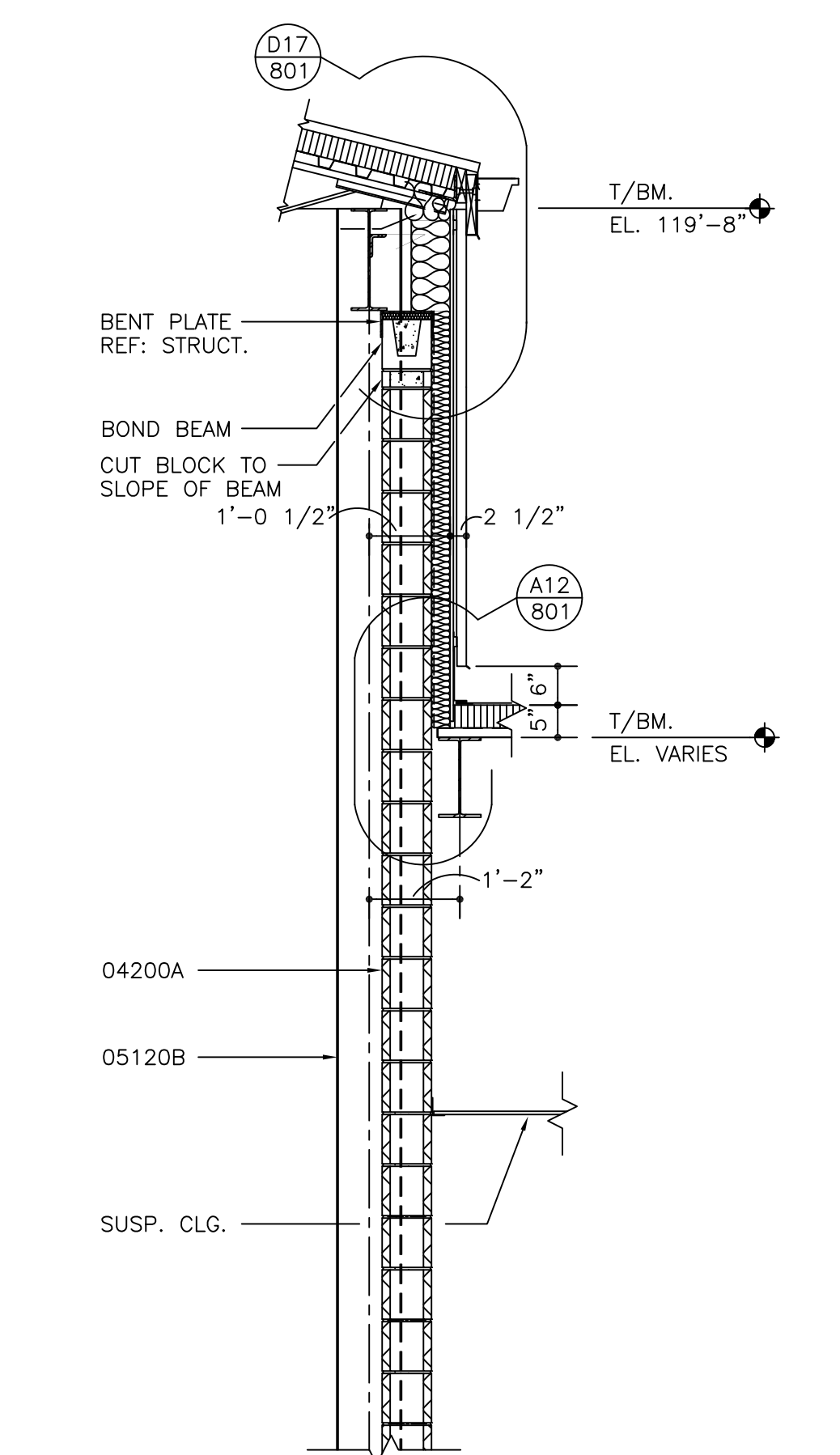
A1 SECTION WINDOW @ LOUNGE 102
SCALE: 1/2"=1'-0"



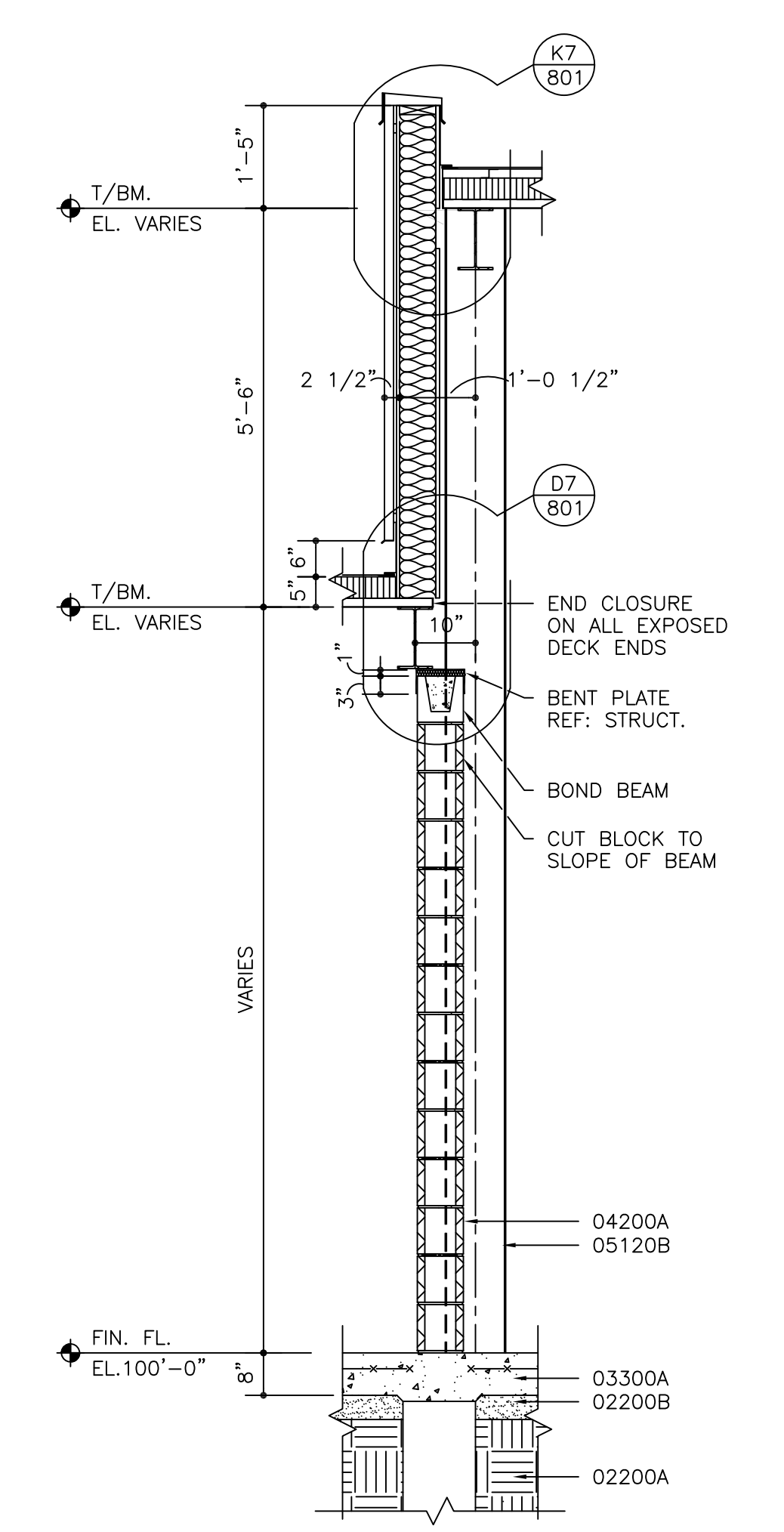
F5 SECTION NORTH WALL OF WORK BAYS @ GARAGE DOOR
SCALE: 1/2"=1'-0"



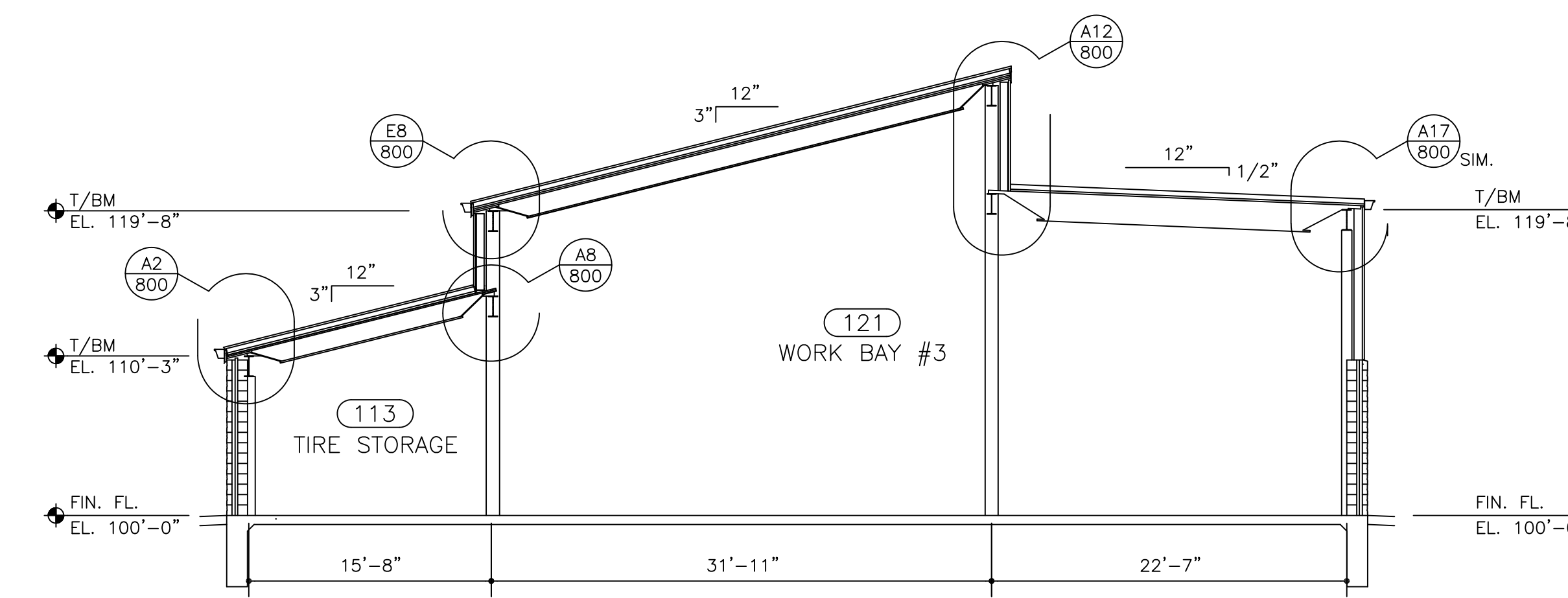
A5 SECTION UPPER WEST WALL OF WORK AREA 123 @ ROOF ACCESS DOOR
SCALE: 1/2"=1'-0"



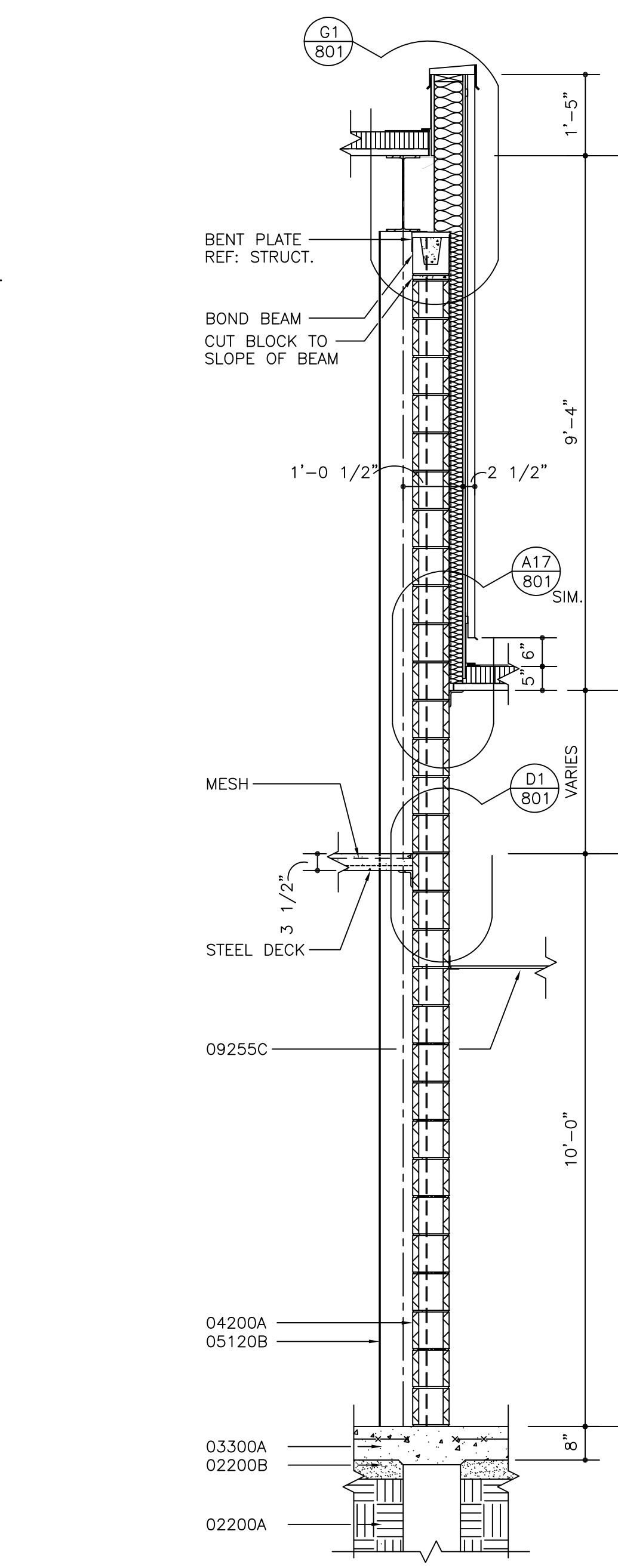
G9 SECTION SOUTH WALL OF WORK BAY #8 @ C-12-16 ONLY, REF: STRUCT.
SCALE: 1/2"=1'-0"



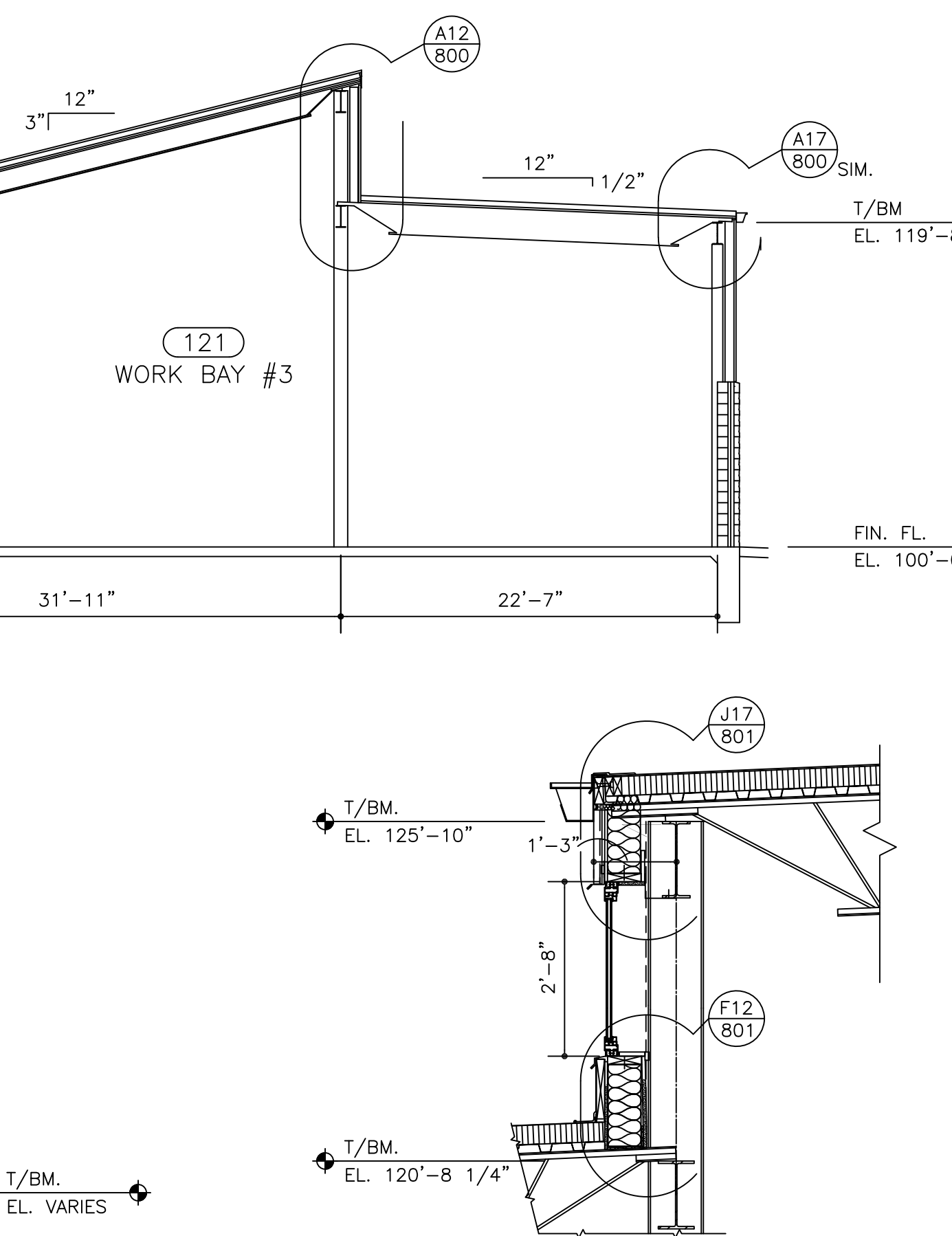
A9 SECTION WEST WALL OF PARTS STORAGE 111 EAST WALL OF TIRE STOR. 113
SCALE: 1/2"=1'-0"



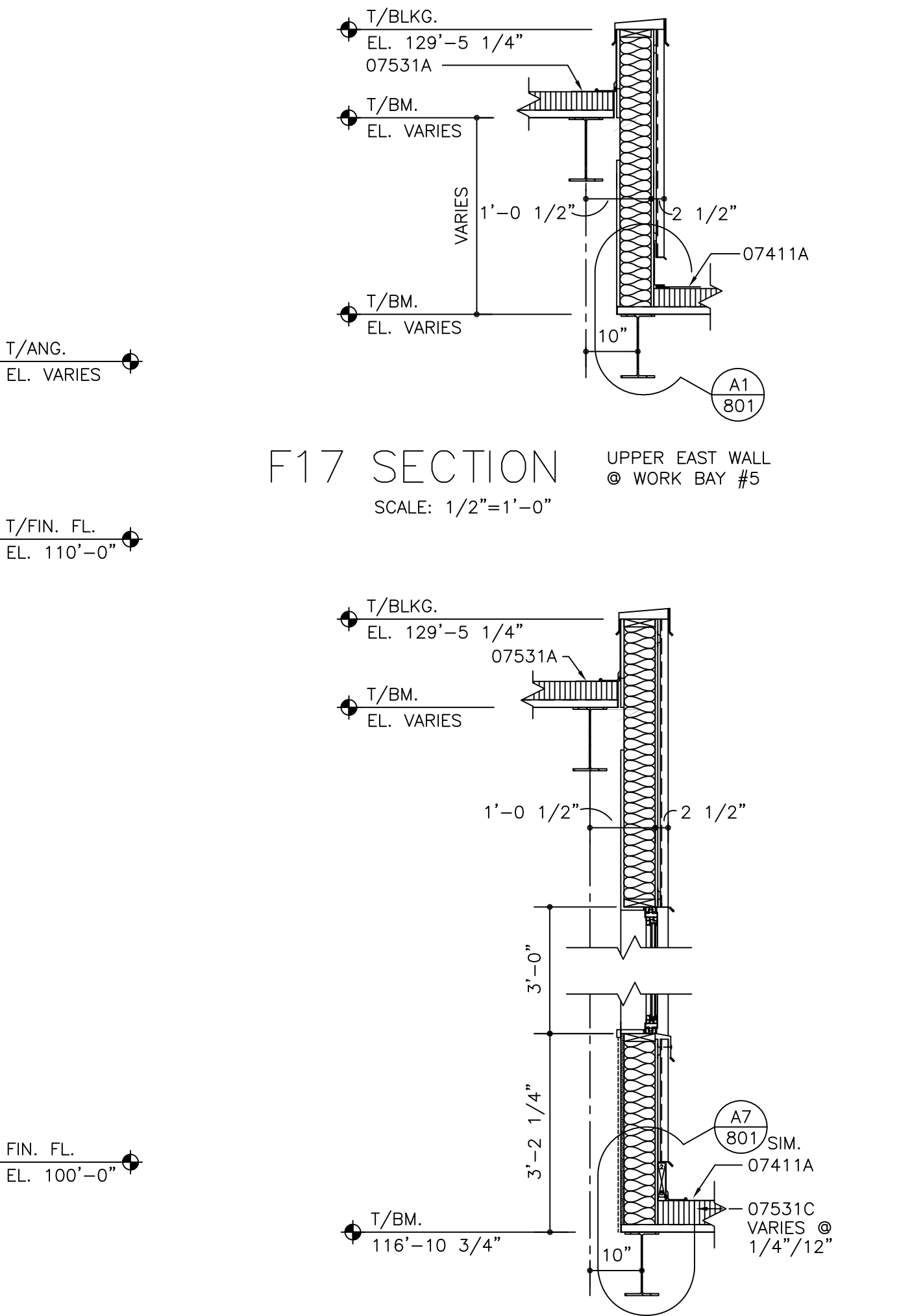
J12 BUILDING SECTION
SCALE: 1/8"=1'-0"



A12 SECTION EAST WALL OF PARTS STORAGE 111 WEST WALL OF MENS 108
SCALE: 1/2"=1'-0"



A17 SECTION UPPER EAST WALL OF WORK AREA SHOWN THROUGH CLERESTORY
SCALE: 1/2"=1'-0"



A17 SECTION UPPER EAST WALL OF WORK AREA SHOWN THROUGH CLERESTORY
SCALE: 1/2"=1'-0"

- ### KEYNOTES
- DIVISION 2 - SITE WORK
 - 02200 EARTH WORK
 - A. Engineered fill
 - B. Moisture control fill
 - DIVISION 3 - CONCRETE
 - 03300 CONCRETE
 - A. Reinforced concrete
 - B. Concrete Slab
 - C. Expansion Joint
 - DIVISION 4 - MASONRY
 - 04200 UNIT MASONRY
 - A. Light weight concrete block, reinforced - ref. struct.
 - B. Split face concrete block - 4"
 - C. Solid concrete masonry sill - smooth face
 - D. Bond beam - ref. struct.
 - E. Copper fabric flashing
 - F. Weep holes - ref. spec.
 - G. Joint reinforcement
 - DIVISION 5 - METAL
 - 05120 STRUCTURAL STEEL
 - A. Steel beam - ref. struct.
 - B. Steel column
 - C. Steel channel
 - D. Bent Plate
 - 05210 STEEL JOISTS
 - A. Steel joist - ref. struct.
 - B. Steel joist extension
 - 05310 STEEL DECK
 - A. Steel roof deck - ref. struct.
 - 05400 COLD FORMED METAL FRAMING
 - A. Steel studs - size & gauge noted
 - B. Vertical slide stud clips
 - C. Runner channel
 - D. Gypsum sheathing
 - 05500 METAL FABRICATIONS
 - Steel lintel - type & size noted
 - DIVISION 6 - WOOD AND PLASTICS
 - 06105 MISCELLANEOUS CARPENTRY
 - A. Wood blocking - pressure treated
 - 06402 INTERIOR ARCHITECTURAL WOODWORK
 - A. Plastic laminate window stool
 - B. Interior wood trim
 - DIVISION 7 - THERMAL AND MOISTURE PROTECTION
 - 07210 BUILDING INSULATION
 - A. Extruded polystyrene board - thickness noted
 - B. Mineral fiber batt - unfaced
 - C. Vapor retarder membrane
 - D. Air infiltration barrier
 - 07411 MANUFACTURED ROOF PANELS
 - A. Standing seam metal roof
 - B. Polyisocyanurate insulation - thickness noted
 - C. Metal trim/closure
 - D. Metal gutter
 - E. Metal downspout
 - F. Snow Guards
 - 07412 MANUFACTURED WALL PANELS
 - A. Preformed metal wall panel
 - B. Metal subgrit
 - C. Metal flashing/closure
 - 07531 EPDM SINGLE-PLY MEMBRANE ROOFING
 - A. EPDM membrane roofing
 - B. EPDM flashing
 - C. Polyisocyanurate foam roof insulation
 - 07710 MANUFACTURED ROOF SPECIALTIES
 - A. Metal coping
 - 07901 JOINT SEALANTS
 - A. Joint sealant
 - DIVISION 8 - DOORS AND WINDOWS
 - 08360 SECTIONAL OVERHEAD DOORS
 - A. Insulated steel sectional overhead door
 - B. Overhead door track
 - 08410 ALUMINUM ENTRANCES AND STOREFRONTS
 - A. Aluminum framing - flush glazing
 - B. Aluminum door
 - 08520 ALUMINUM WINDOWS
 - A. Aluminum window
 - B. Aluminum sill
 - 08800 GLAZING
 - A. Insulating glass
 - B. Single pane glass
 - DIVISION 9 - FINISHES
 - 09255 GYPSUM BOARD ASSEMBLIES
 - A. Steel studs - size & gauge noted
 - B. Gypsum board
 - C. Suspended grid & acoustic board
 - D. Exterior gypsum ceiling board
 - E. Furring channel
 - F. Runner channel
 - G. Deflection track
 - 09310 CERAMIC TILE
 - A. Glazed ceramic wall tile
 - B. Ceramic paver tile
 - 09511 ACOUSTICAL PANEL CEILING
 - A. Metal ceiling grid
 - B. Acoustical panel

Copyright © 1996 by Ekdahl, Davis, Depew, Persson / Architects P.A. All rights reserved.

Ekdahl, Davis, Depew, Persson/Architects,P.A.
700 Harrison Suite 1100 Topeka Kansas 66603
Telephone (913) 234-6664 Fax (913) 233-4600

BUS MAINTENANCE FACILITY
TOPEKA METROPOLITAN TRANSIT AUTHORITY
TOPEKA, KANSAS

BUILDING & WALL SECTIONS

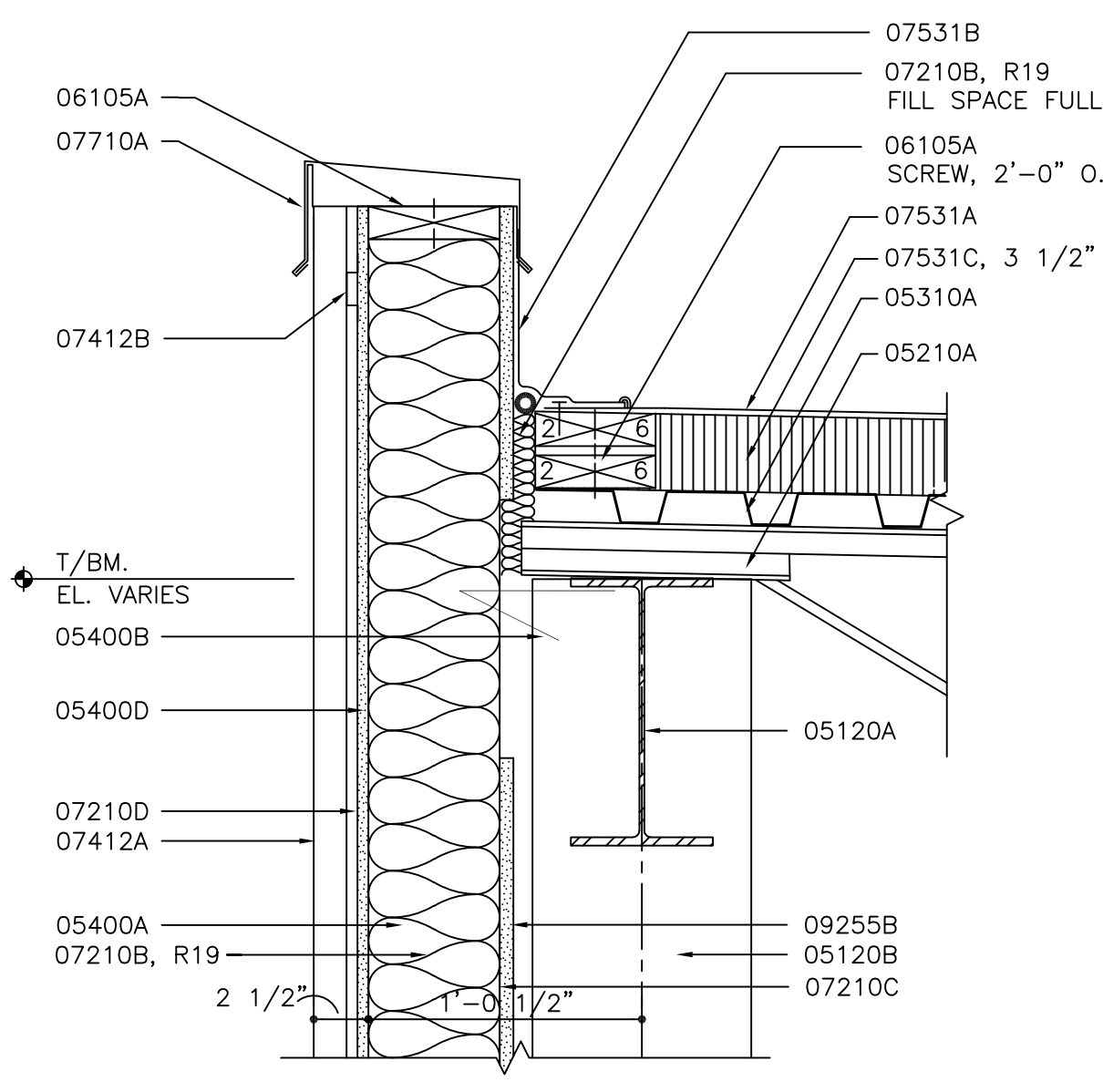
DATE: 01/10/97
ARCH. PROJECT NO. 95-36
A301

C:\DWG\95-36\SEC-4001\A301BASE 1 01/10/97 PK BASE SHEET

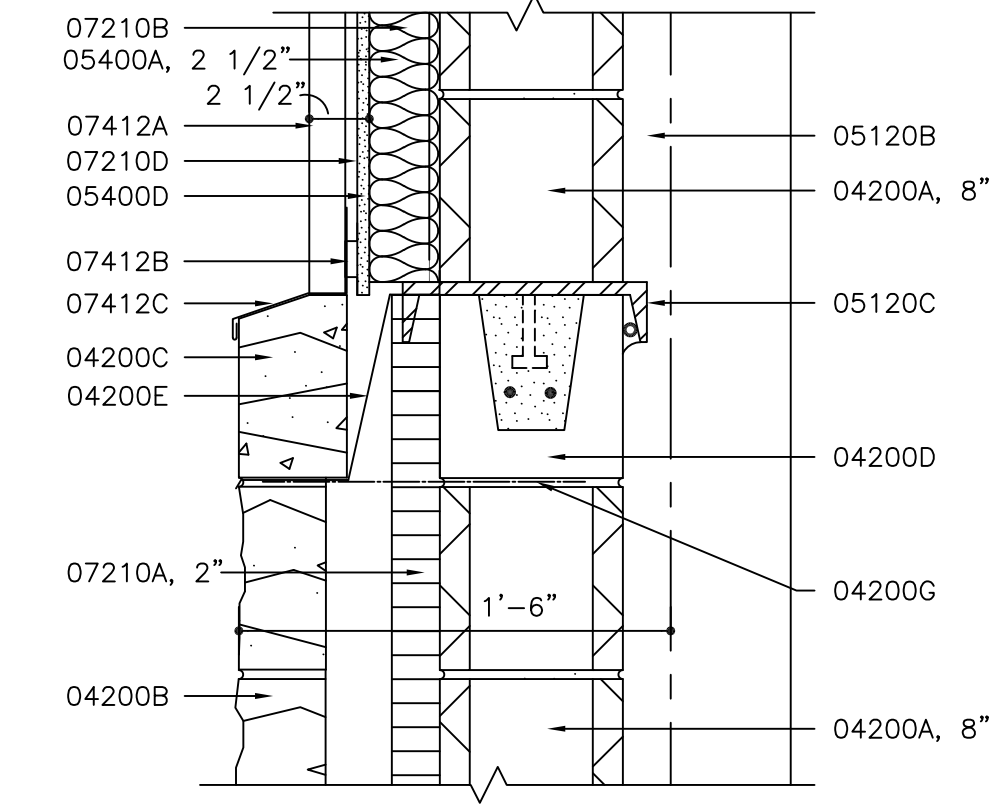
EXIST BUILDING - THIS SHEET FOR INFORMATION ONLY

KEYNOTES

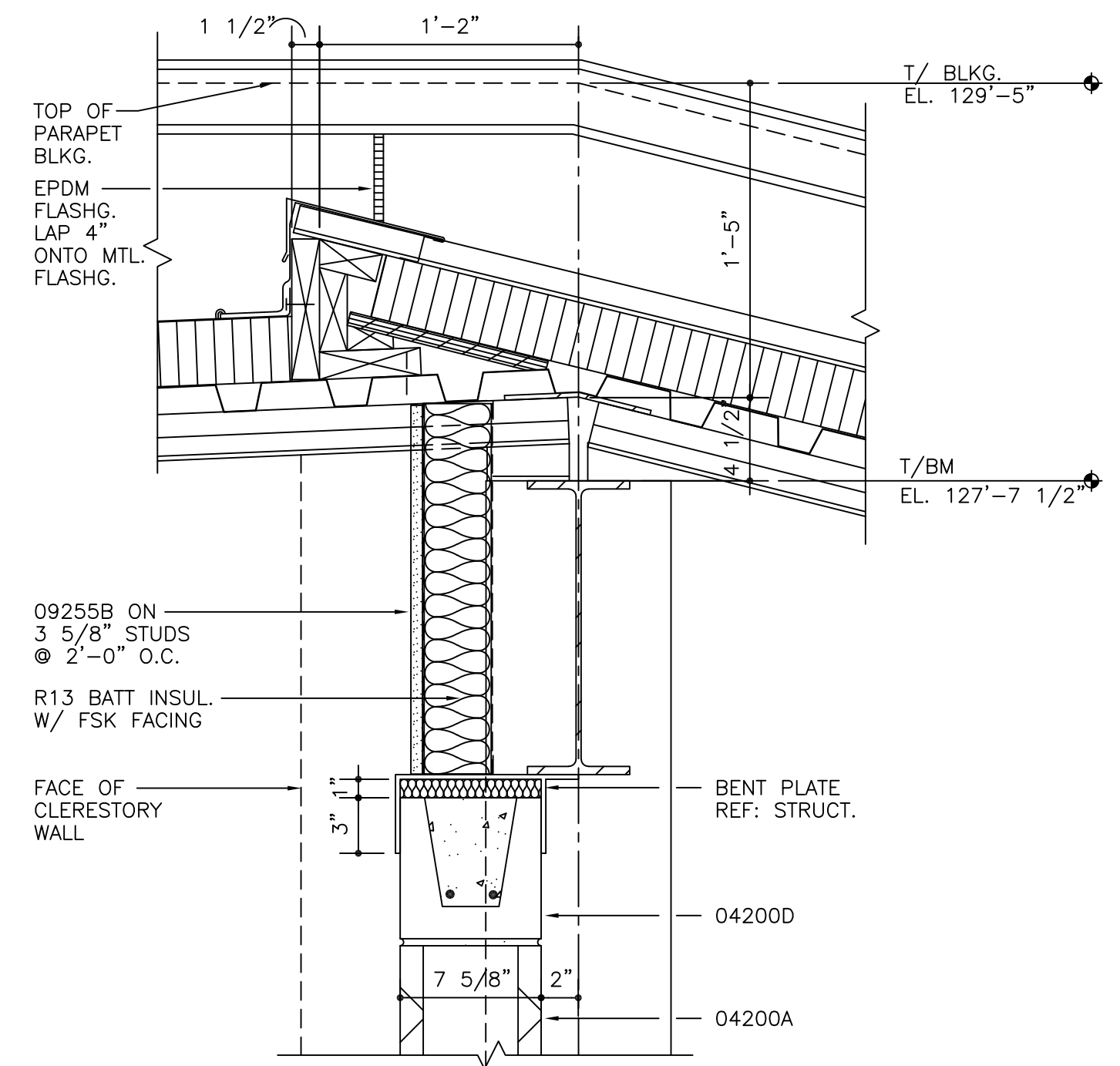
- DIVISION 2 - SITE WORK**
- 02200 EARTH WORK
 - A. Engineered fill
 - B. Moisture control fill
- DIVISION 3 - CONCRETE**
- 03300 CONCRETE
 - A. Reinforced concrete
 - B. Concrete Slab
 - C. Expansion Joint
- DIVISION 4 - MASONRY**
- 04200 UNIT MASONRY
 - A. Light weight concrete block, reinforced - ref. struct.
 - B. Split face concrete block - 4"
 - C. Solid concrete masonry sill - smooth face
 - D. Bond beam - ref. struct.
 - E. Copper fabric flashing
 - F. Weep holes - ref. spec.
 - G. Joint reinforcement
- DIVISION 5 - METAL**
- 05120 STRUCTURAL STEEL
 - A. Steel beam - ref. struct.
 - B. Steel column
 - C. Steel channel
 - D. Bent Plate
- 05210 STEEL JOISTS
 - A. Steel joist - ref. struct.
 - B. Steel joist extension
- 05310 STEEL DECK
 - A. Steel roof deck - ref. struct.
- 05400 COLD FORMED METAL FRAMING
 - A. Steel studs - size & gauge noted
 - B. Vertical slide stud clips
 - C. Runner channel
 - D. Gypsum sheathing
- 05500 METAL FABRICATIONS
 - A. Steel lintel - type & size noted
- DIVISION 6 - WOOD AND PLASTICS**
- 06105 MISCELLANEOUS CARPENTRY
 - A. Wood blocking - pressure treated
- 06402 INTERIOR ARCHITECTURAL WOODWORK
 - A. Plastic laminate window stool
 - B. Interior wood trim
- DIVISION 7 - THERMAL AND MOISTURE PROTECTION**
- 07210 BUILDING INSULATION
 - A. Extruded polystyrene board - thickness noted
 - B. Mineral fiber batt - unfaced
 - C. Vapor retarder membrane
 - D. Air infiltration barrier
- 07411 MANUFACTURED ROOF PANELS
 - A. Standing seam metal roof
 - B. Polyisocyanurate insulation - thickness noted
 - C. Metal trim/closure
 - D. Metal gutter
 - E. Metal downspout
 - F. Snow Guards
- 07412 MANUFACTURED WALL PANELS
 - A. Preformed metal wall panel
 - B. Metal subgrit
 - C. Metal flashing/closure
- 07531 EPDM SINGLE-PLY MEMBRANE ROOFING
 - A. EPDM membrane roofing
 - B. EPDM flashing
 - C. Polyisocyanurate foam roof insulation
- 07710 MANUFACTURED ROOF SPECIALTIES
 - A. Metal coping
- 07901 JOINT SEALANTS
 - A. Joint sealant
- DIVISION 8 - DOORS AND WINDOWS**
- 08360 SECTIONAL OVERHEAD DOORS
 - A. Insulated steel sectional overhead door
 - B. Overhead door track
- 08410 ALUMINUM ENTRANCES AND STOREFRONTS
 - A. Aluminum framing - flush glazing
 - B. Aluminum door
- 08520 ALUMINUM WINDOWS
 - A. Aluminum window
 - B. Aluminum sill
- 08800 GLAZING
 - A. Insulating glass
 - B. Single pane glass
- DIVISION 9 - FINISHES**
- 09255 GYPSUM BOARD ASSEMBLIES
 - A. Steel studs - size & gauge noted
 - B. Gypsum board
 - C. Suspended grid & acoustic board
 - D. Exterior gypsum ceiling board
 - E. Furring channel
 - F. Runner channel
 - G. Deflection track
- 09310 CERAMIC TILE
 - A. Glazed ceramic wall tile
 - B. Ceramic cover tile
- 09511 ACOUSTICAL PANEL CEILING
 - A. Metal ceiling grid
 - B. Acoustical panel



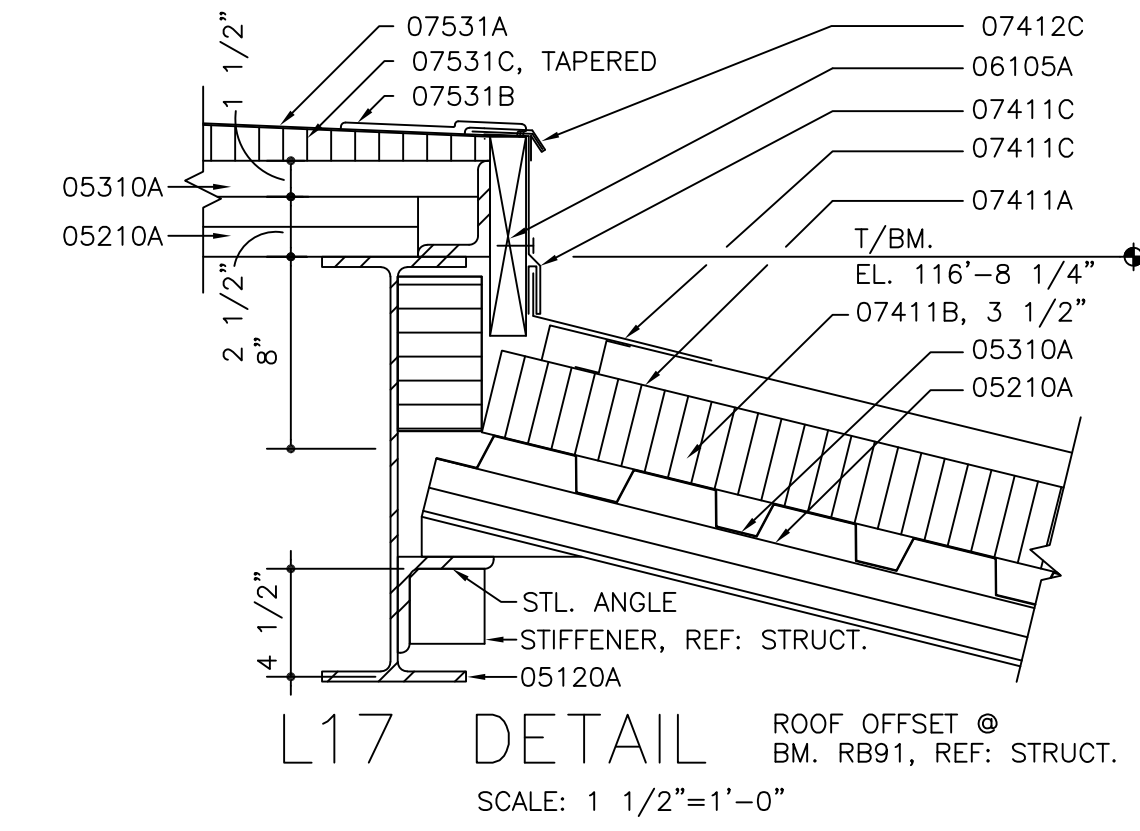
J3 DETAIL WEST WALL @ WORK BAY #1
SCALE: 1 1/2"=1'-0"



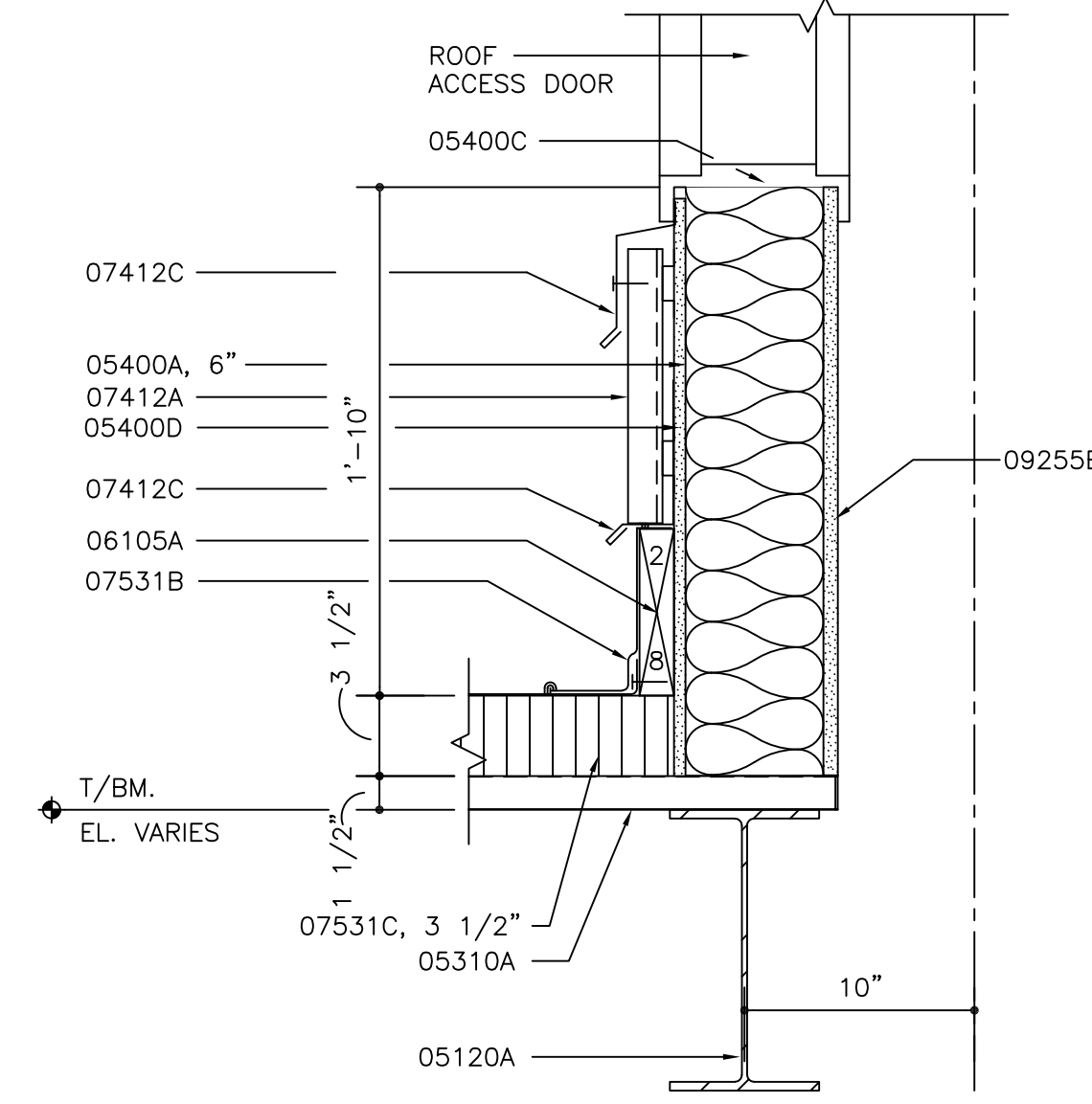
J8 DETAIL EAST WALL @ PARTS STORAGE & SOUTH WALL @ WORK BAY #8
SCALE: 1 1/2"=1'-0"



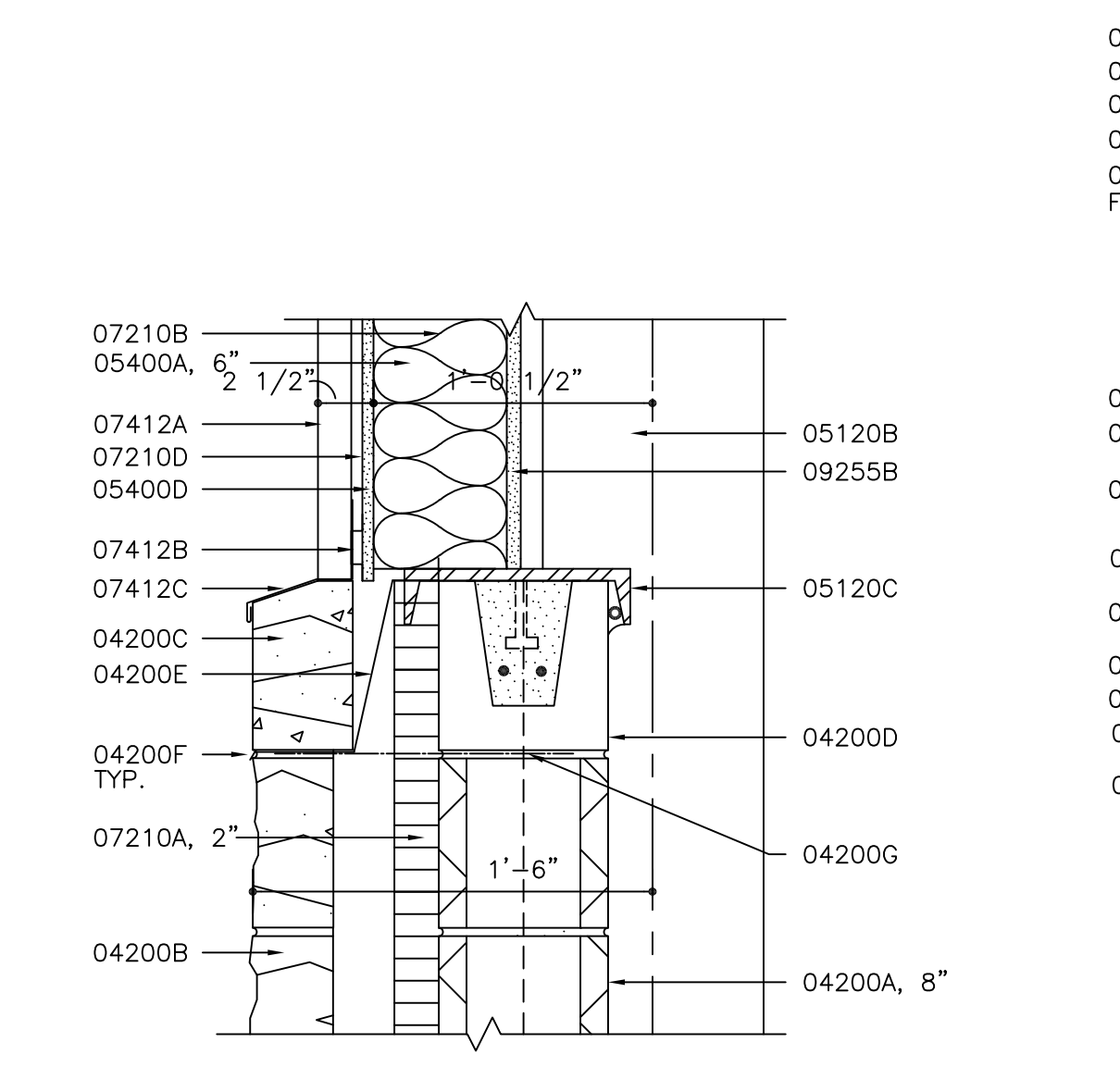
J13 DETAIL ROOF @ BMS. F-8-10
SCALE: 1 1/2"=1'-0"



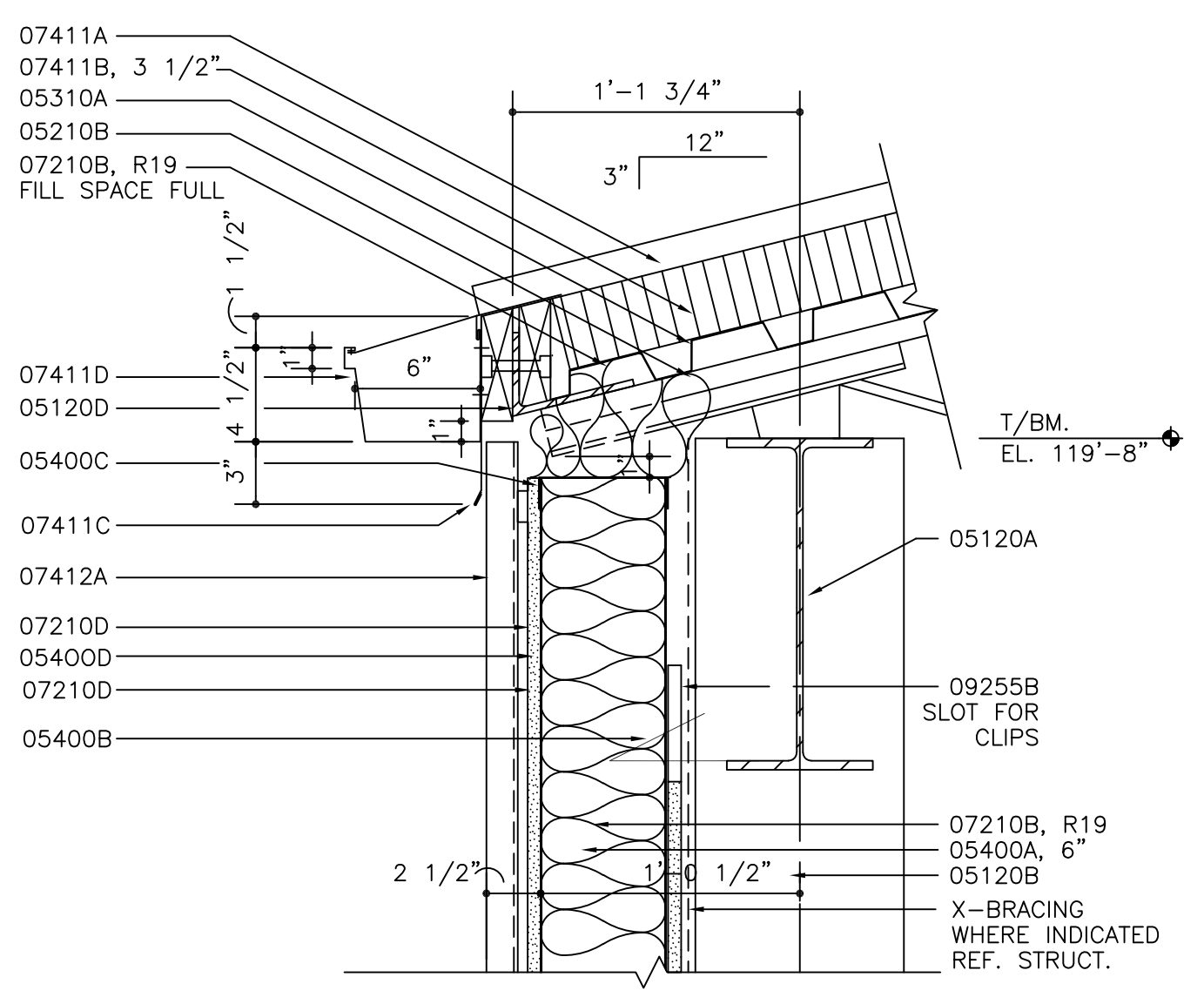
L17 DETAIL ROOF OFFSET @ BM. RB91, REF. STRUCT.
SCALE: 1 1/2"=1'-0"



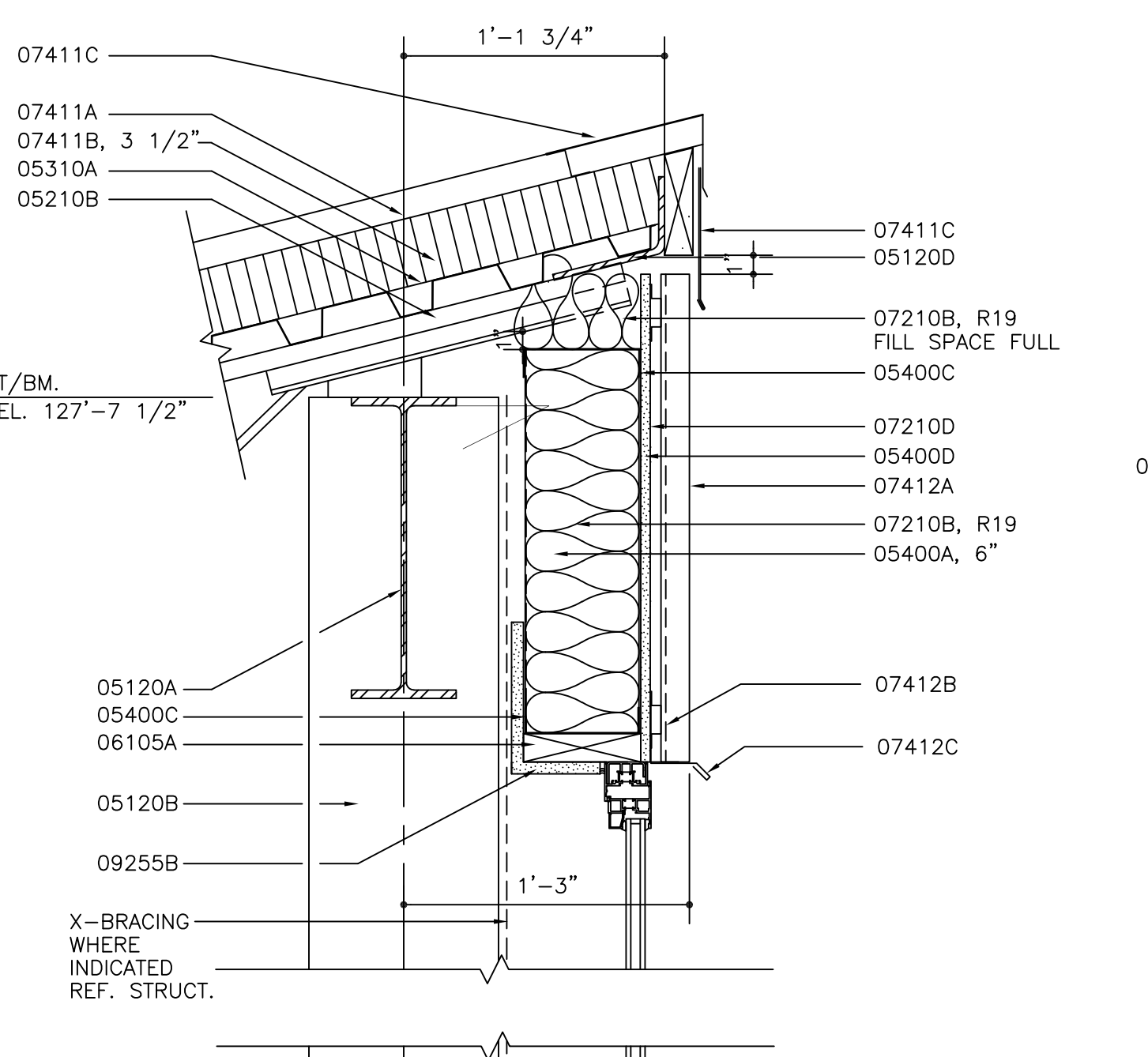
G17 DETAIL UPPER WEST WALL @ WORK AREA 123
SCALE: 1 1/2"=1'-0"



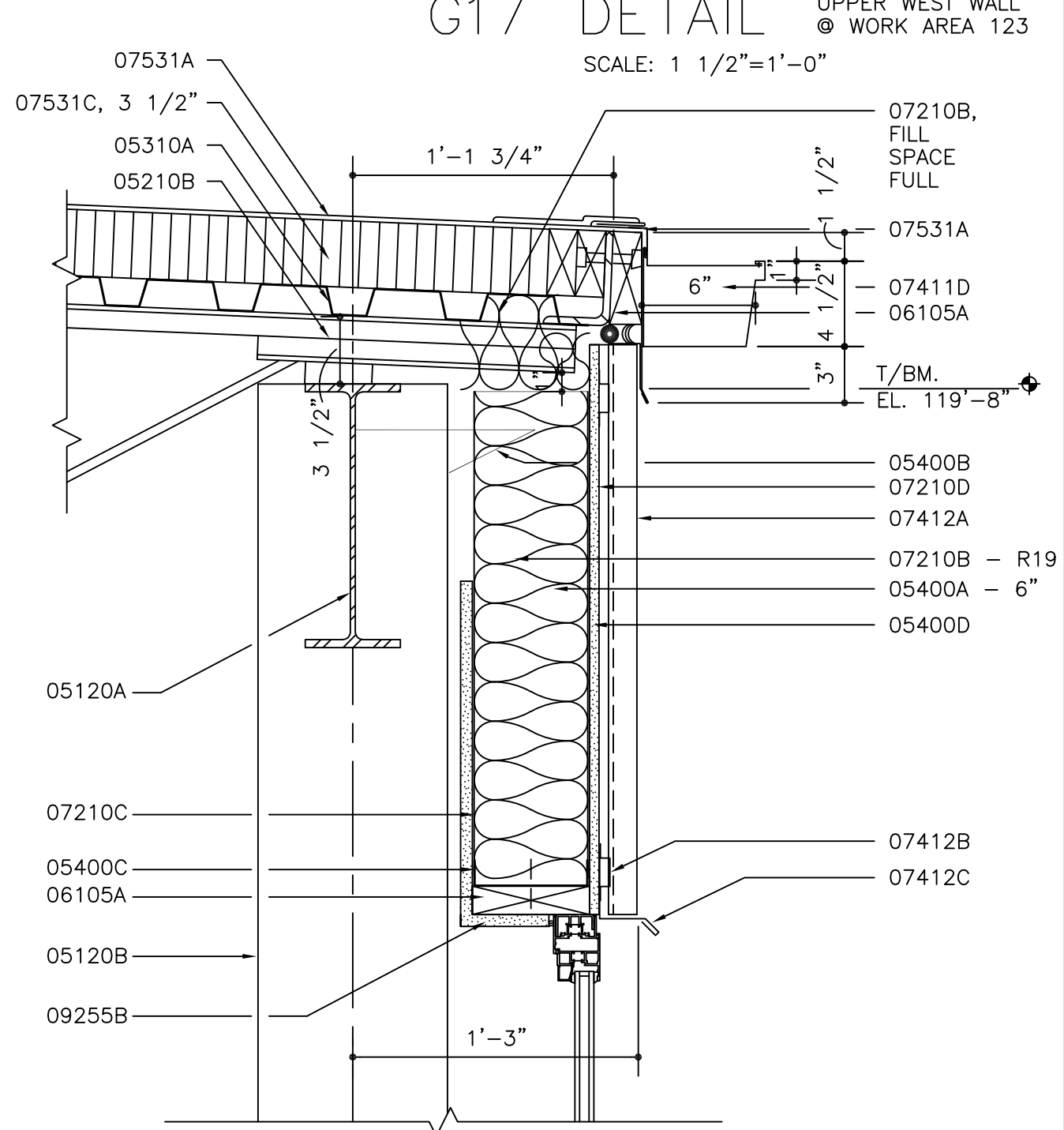
E3 DETAIL WEST WALL @ WORK BAY #1
SCALE: 1 1/2"=1'-0"



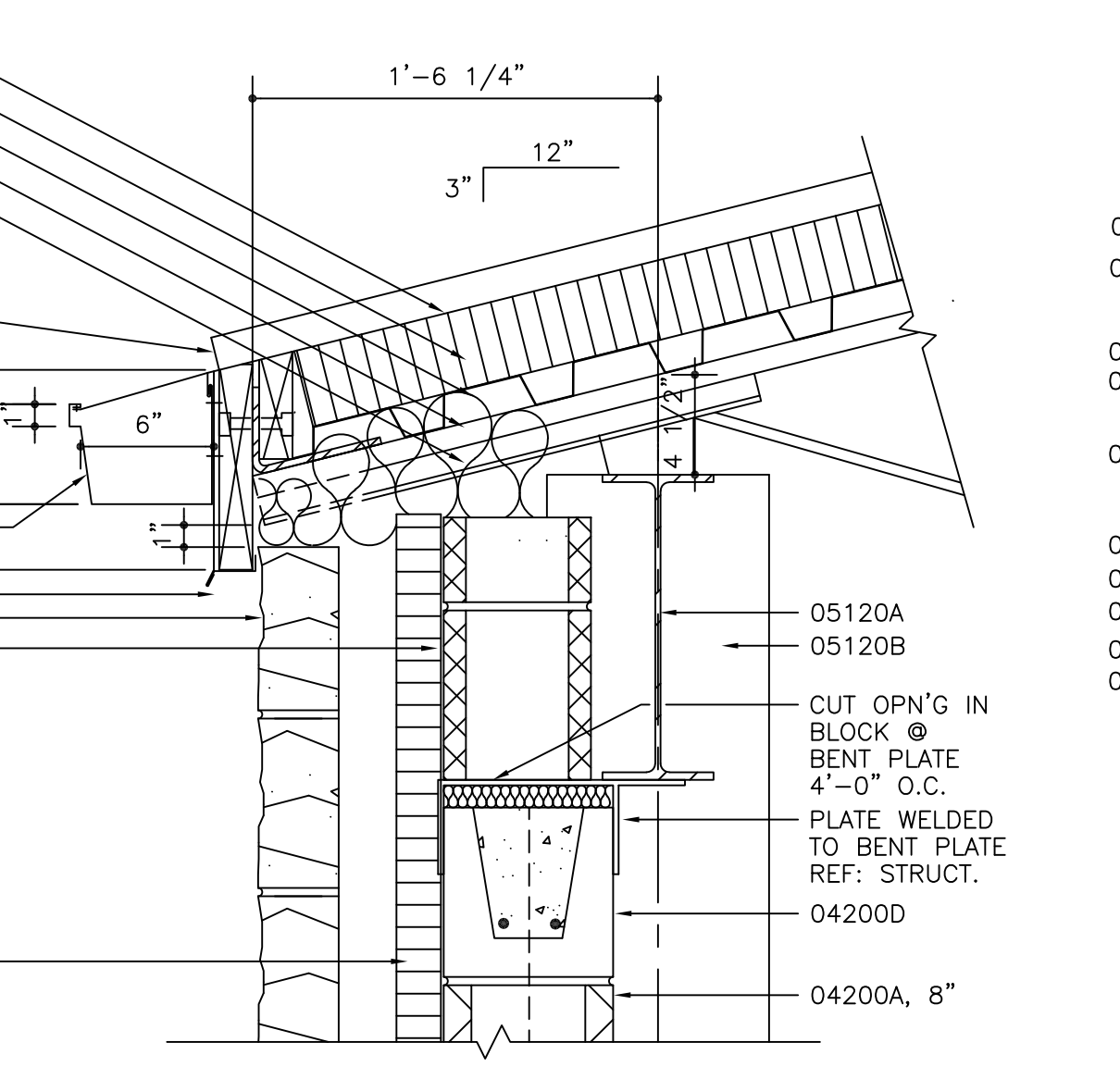
E8 DETAIL SOUTH WALL @ WORK BAY #3
SCALE: 1 1/2"=1'-0"



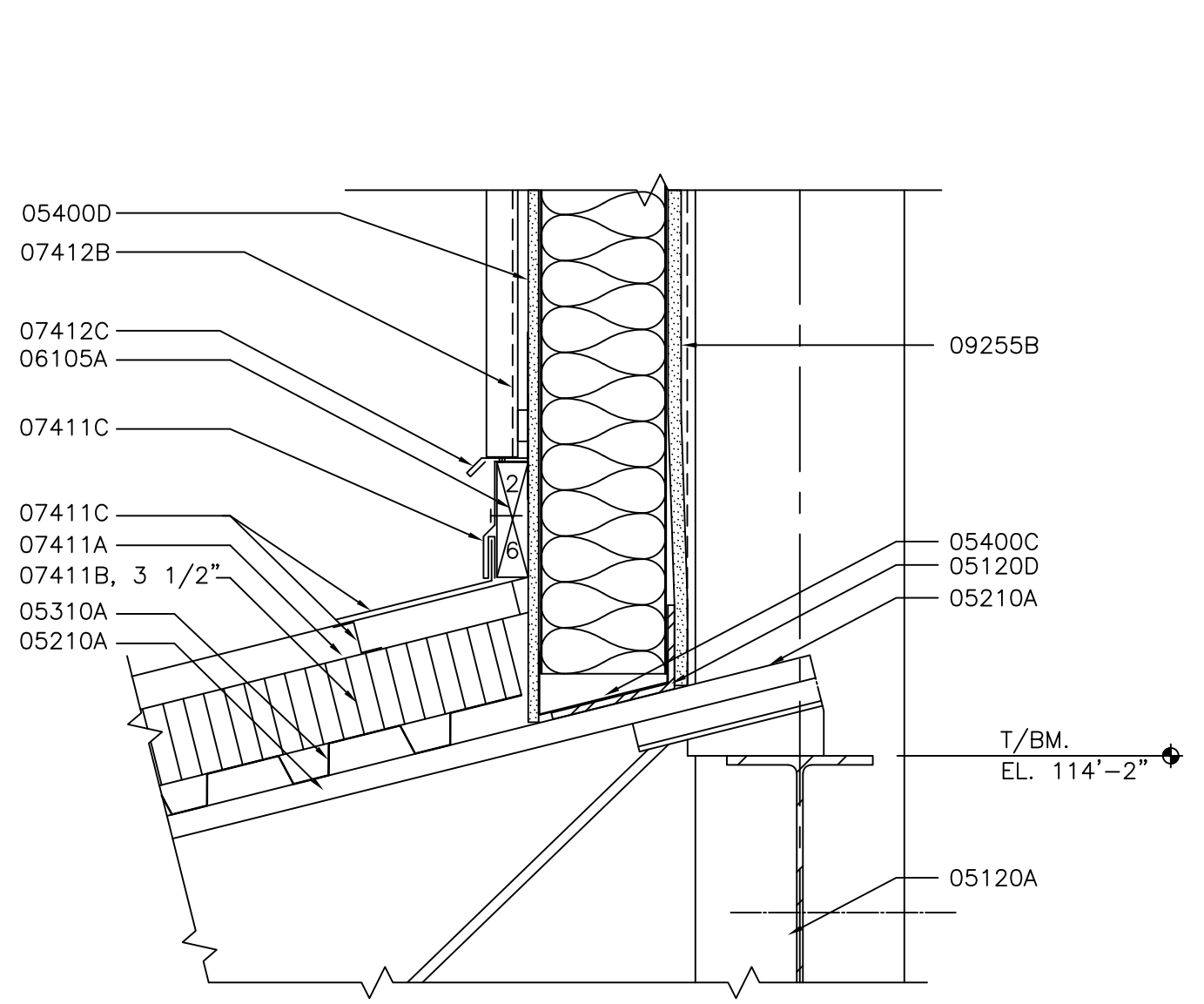
A12 DETAIL CLERESTORY WALL @ WORK BAY #3
SCALE: 1 1/2"=1'-0"



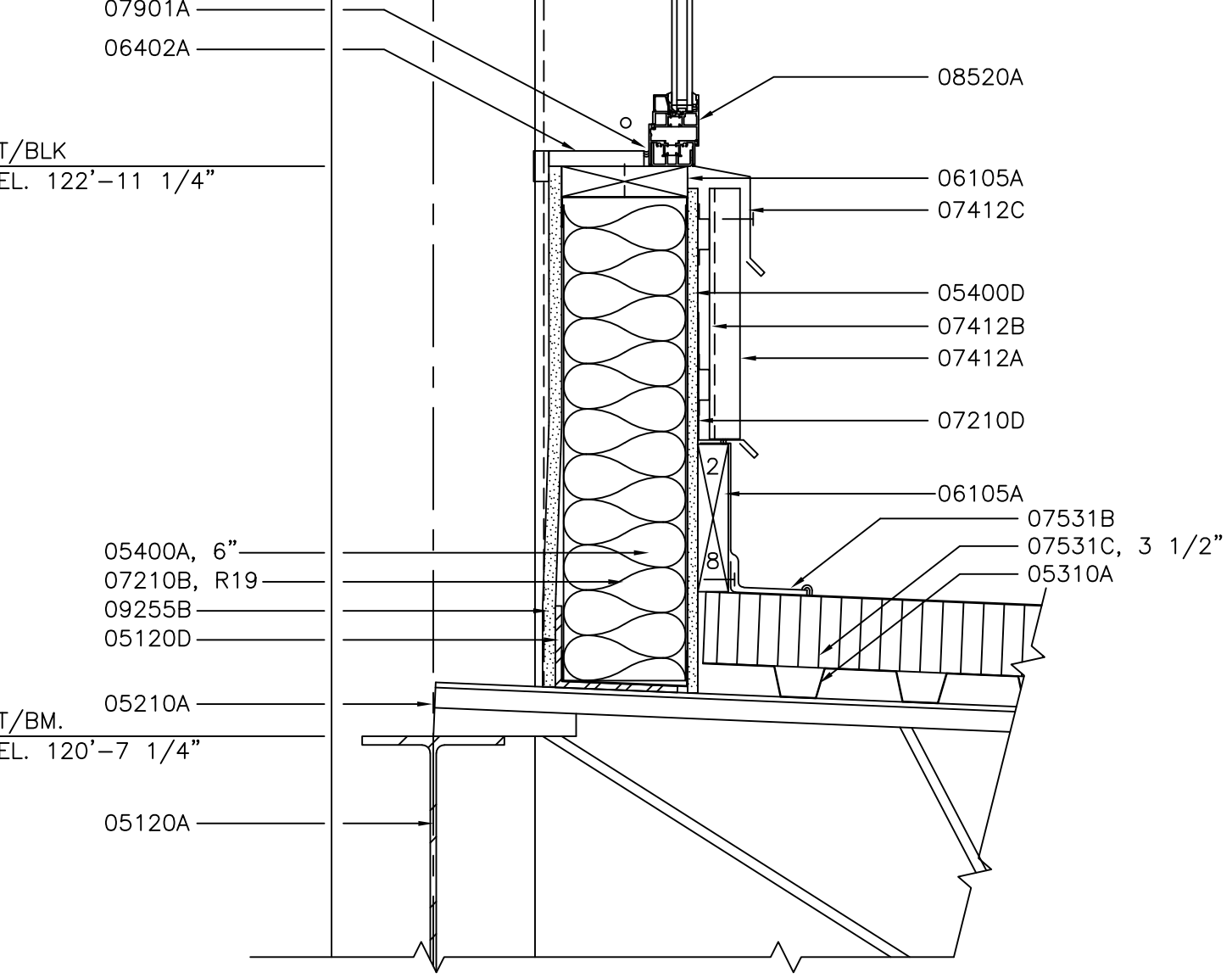
A17 DETAIL NORTH WALL @ WORK BAY #7
SCALE: 1 1/2"=1'-0"



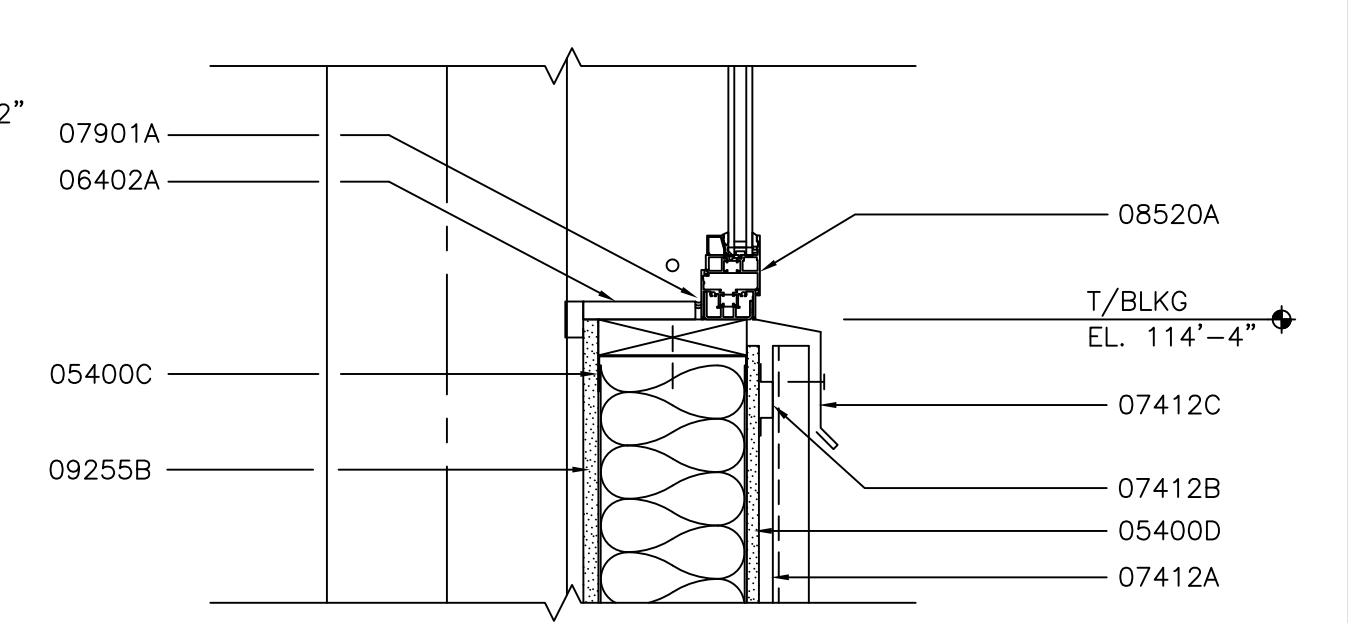
A2 DETAIL SOUTH WALL @ TIRE STORAGE 113
SCALE: 1 1/2"=1'-0"



A8 DETAIL SOUTH WALL @ WORK BAY #3
SCALE: 1 1/2"=1'-0"



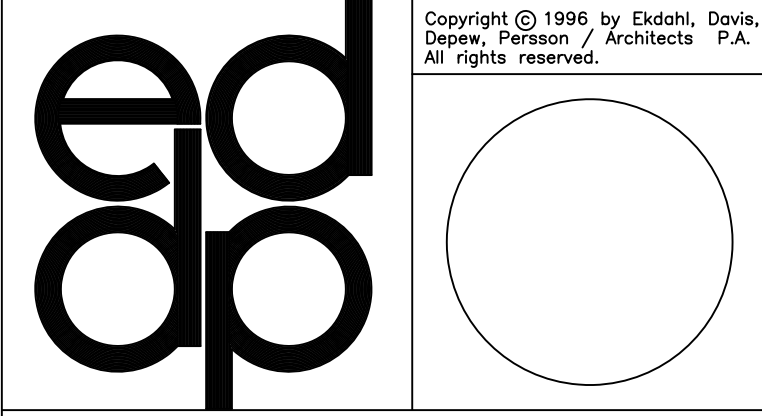
A12 DETAIL CLERESTORY WALL @ WORK BAY #3
SCALE: 1 1/2"=1'-0"



A17 DETAIL NORTH WALL @ WORK BAY #7
SCALE: 1 1/2"=1'-0"

C:\DWG\95-36\01\16-07 PK BASE SHEET

Copyright © 1996 by Ekdahl, Davis, Depew, Persson / Architects P.A. All rights reserved.



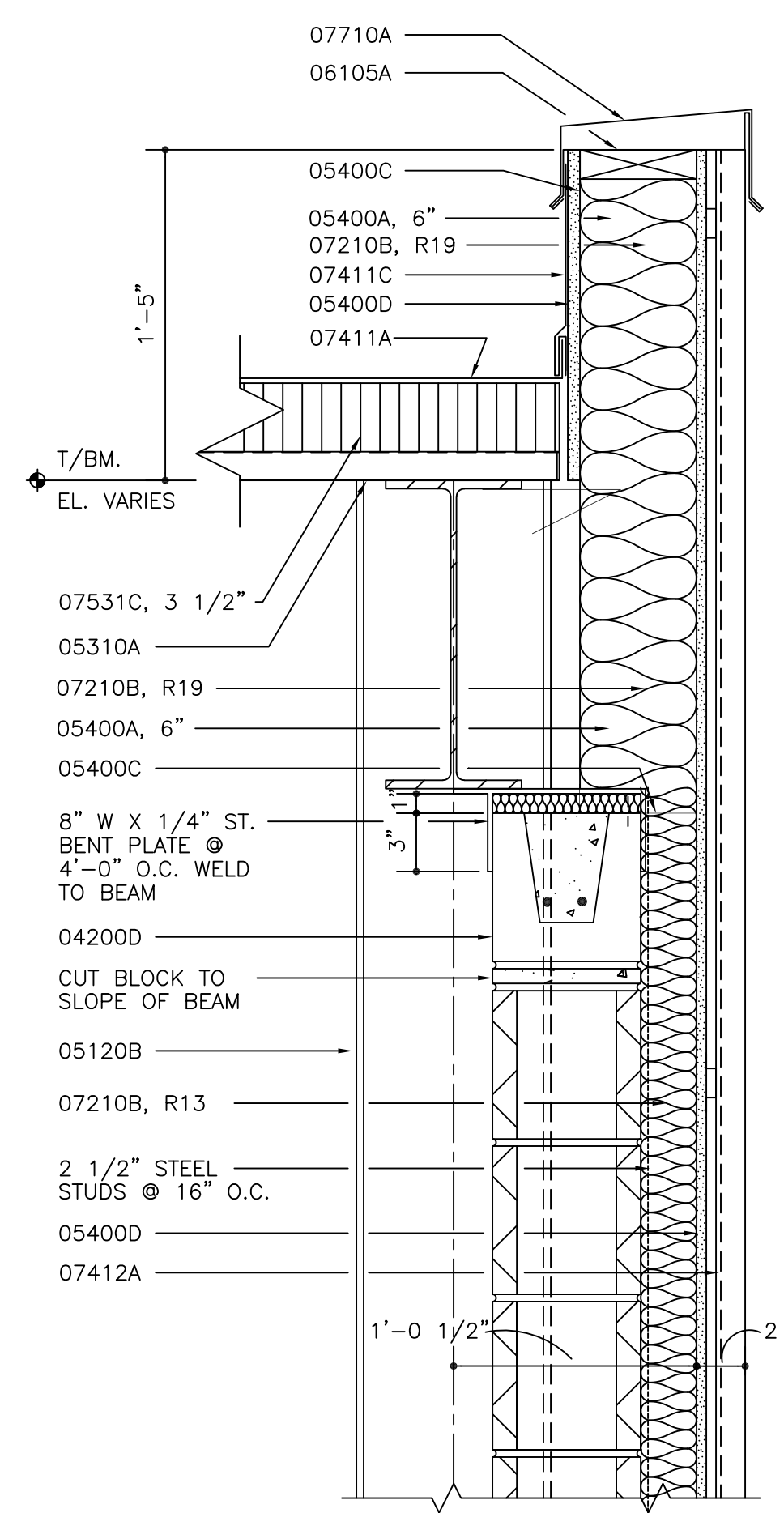
Ekdahl, Davis, Depew, Persson/Architects,P.A.
700 Harrison Suite 1100 Topeka Kansas 66603
Telephone (913) 234-6664 Fax (913) 233-4660

BUS MAINTENANCE FACILITY
TOPEKA METROPOLITAN TRANSIT AUTHORITY
TOPEKA, KANSAS

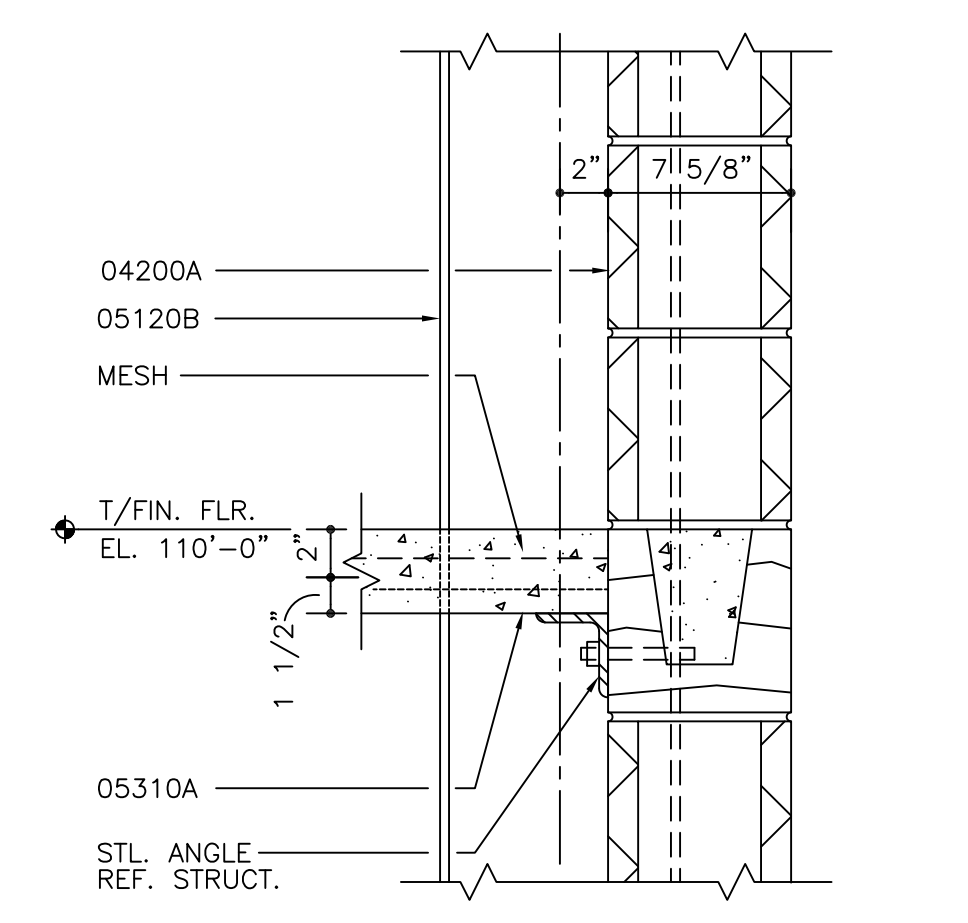
EXTERIOR DETAILS

DATE: 01/10/97
ARCH. PROJECT NO. 95-36
A800

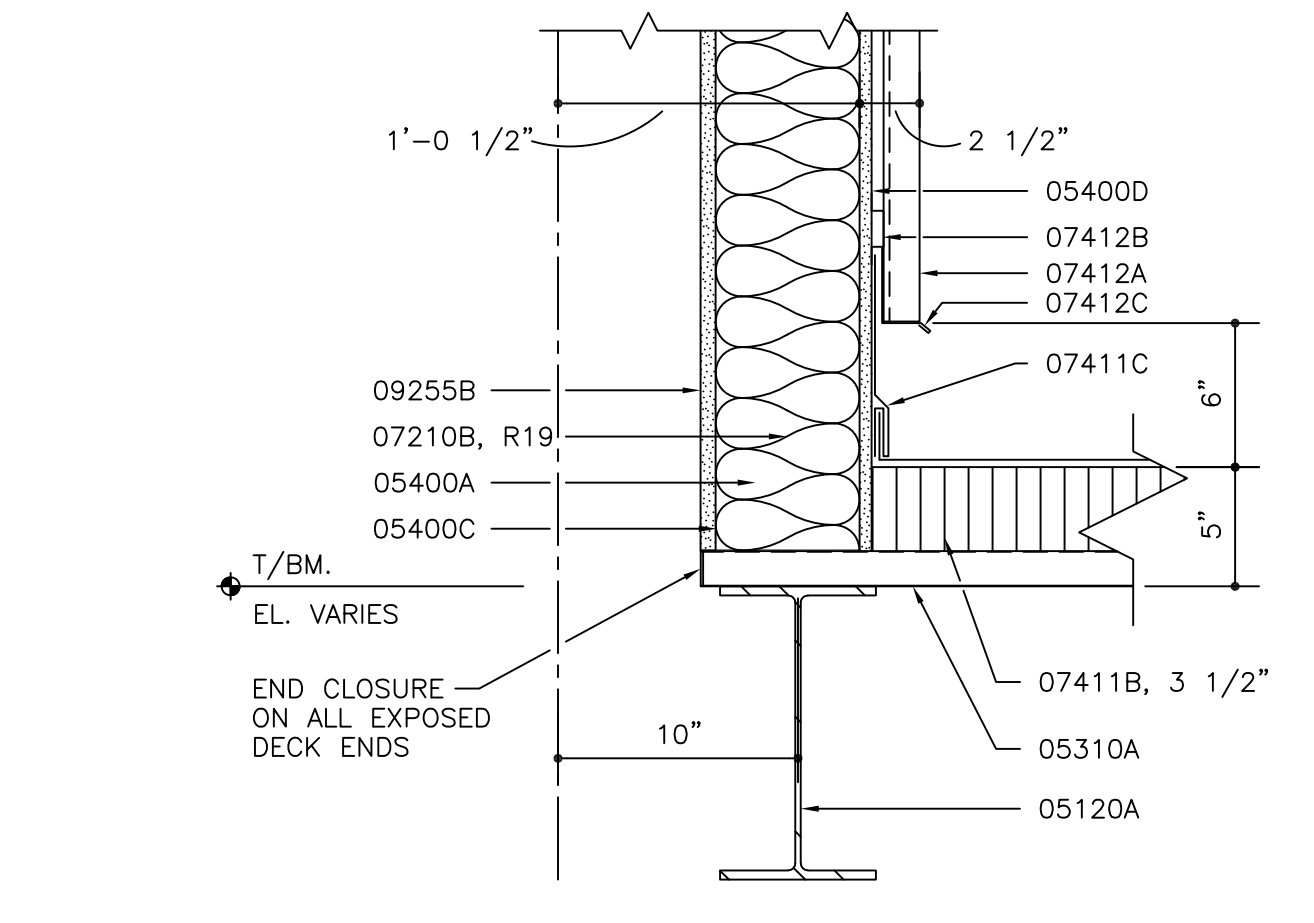
EXIST BUILDING - THIS SHEET FOR INFORMATION ONLY



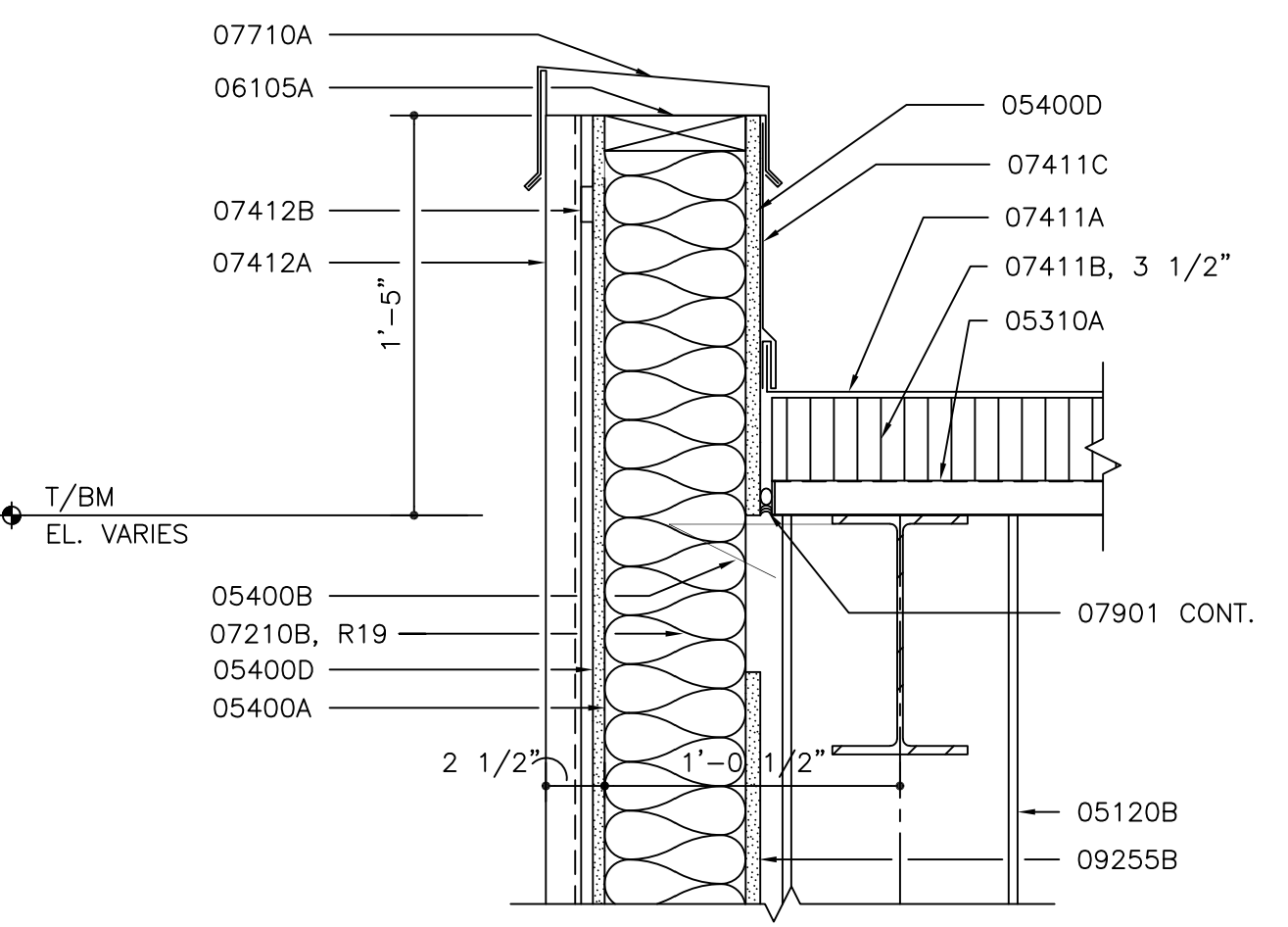
G1 DETAIL EAST WALL OF PARTS STORAGE
SCALE: 1 1/2"=1'-0"



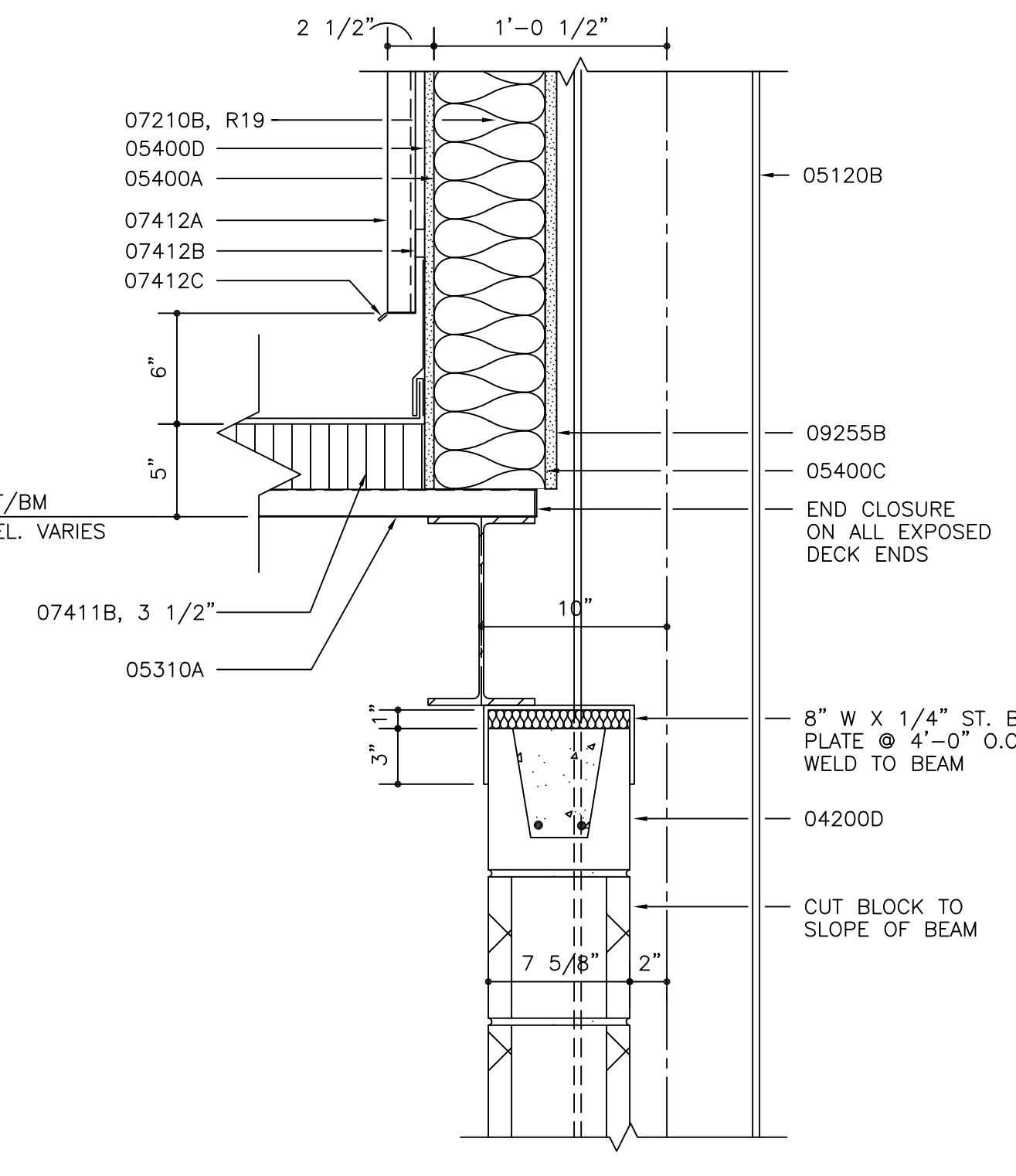
D1 DETAIL WALL OF PARTS STORAGE @ MEZZANINE
SCALE: 1 1/2"=1'-0"



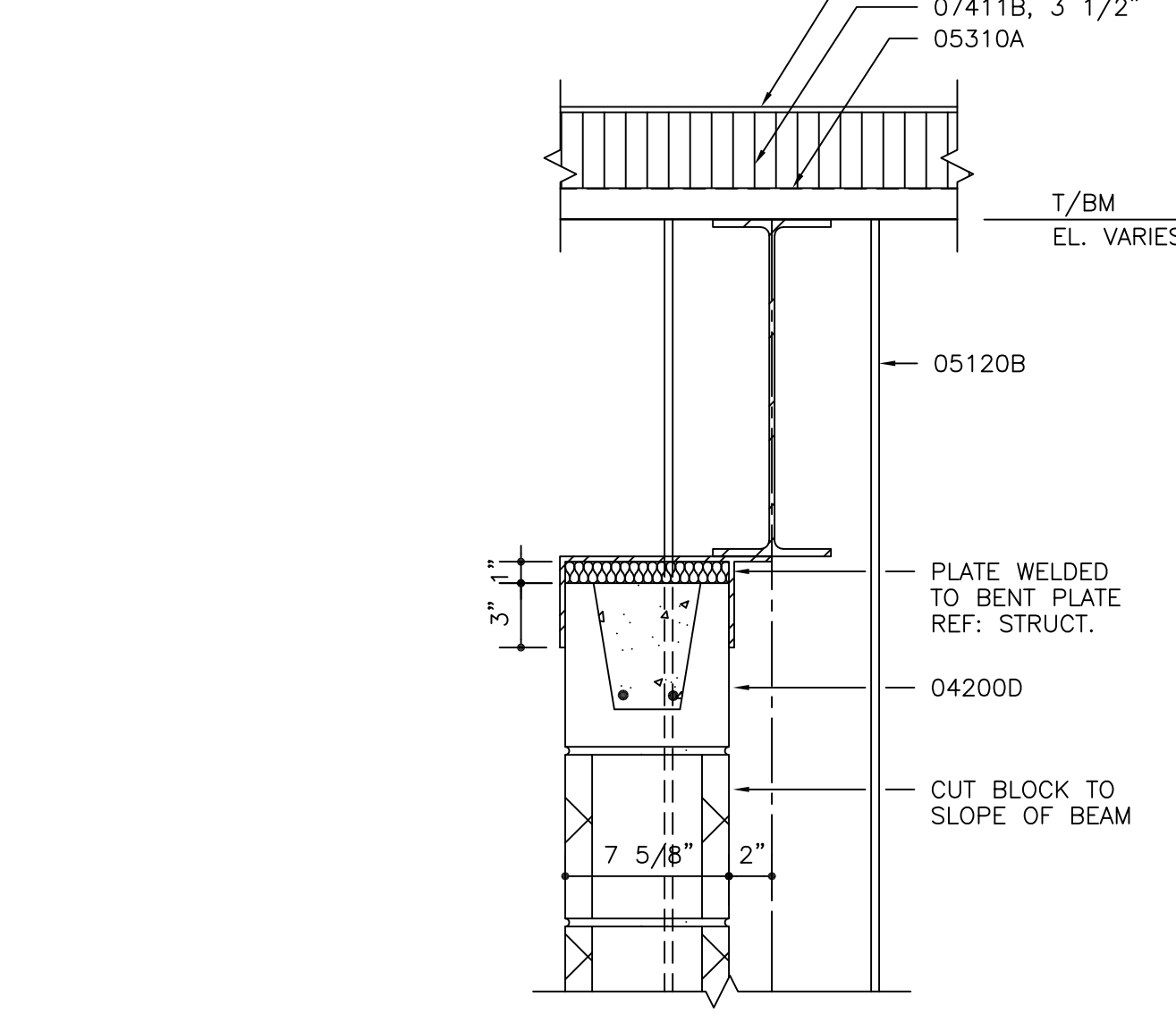
A1 DETAIL UPPER EAST WALL @ WORK BAY #5
SCALE: 1 1/2"=1'-0"



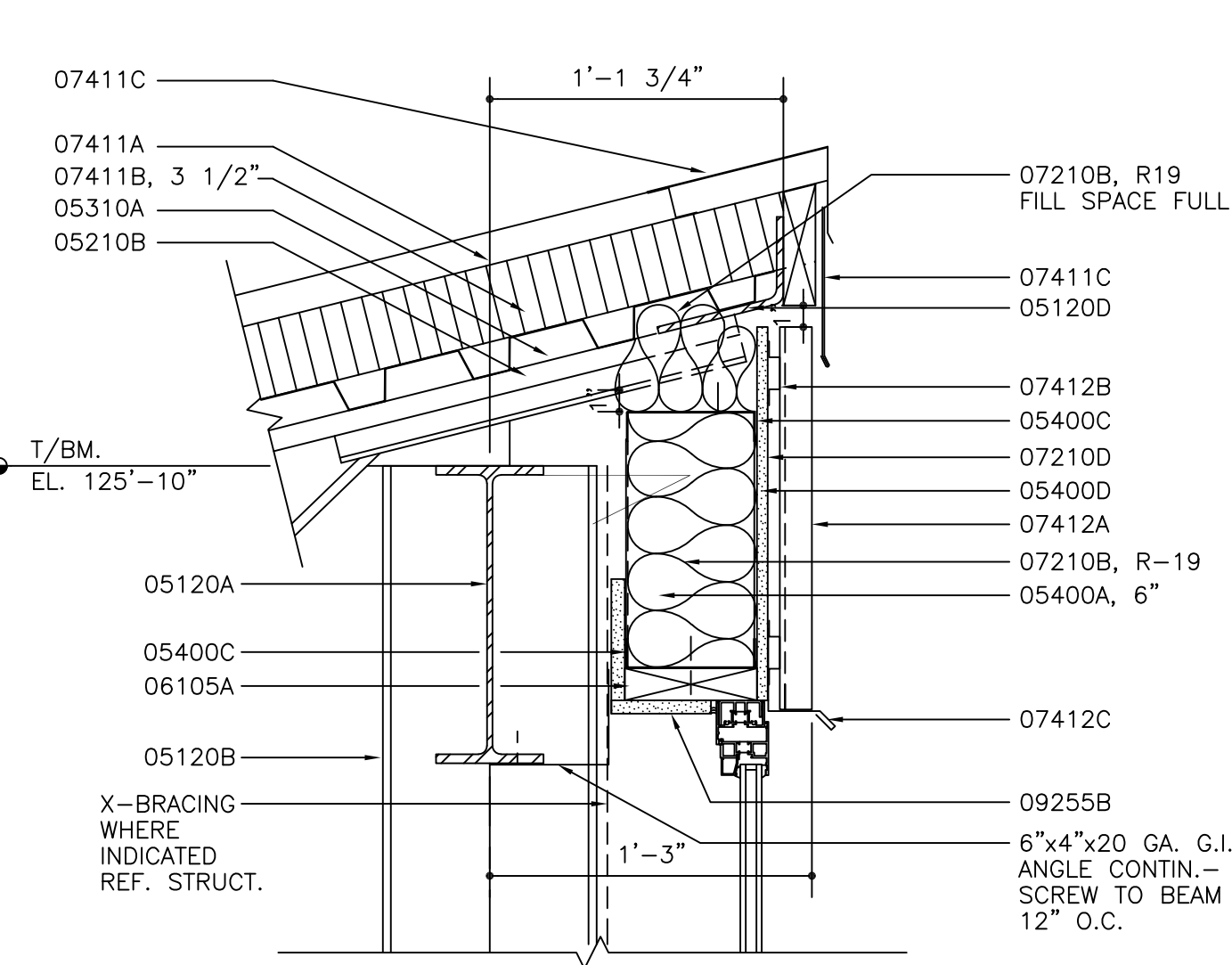
K7 DETAIL WEST WALL OF PARTS STORAGE
SCALE: 1 1/2"=1'-0"



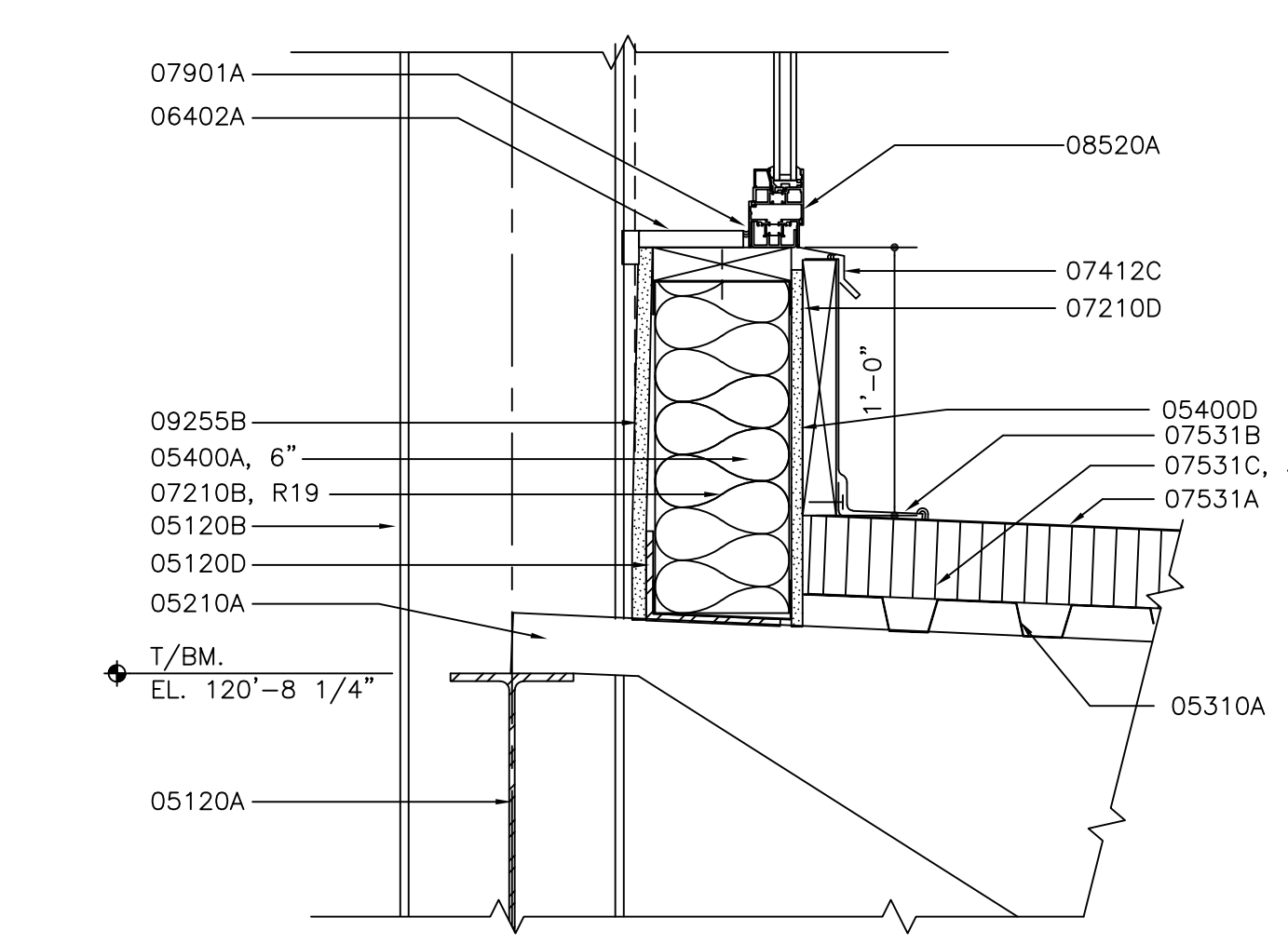
D7 DETAIL EAST WALL OF TIRE STOR. RM. 113
SCALE: 1 1/2"=1'-0"



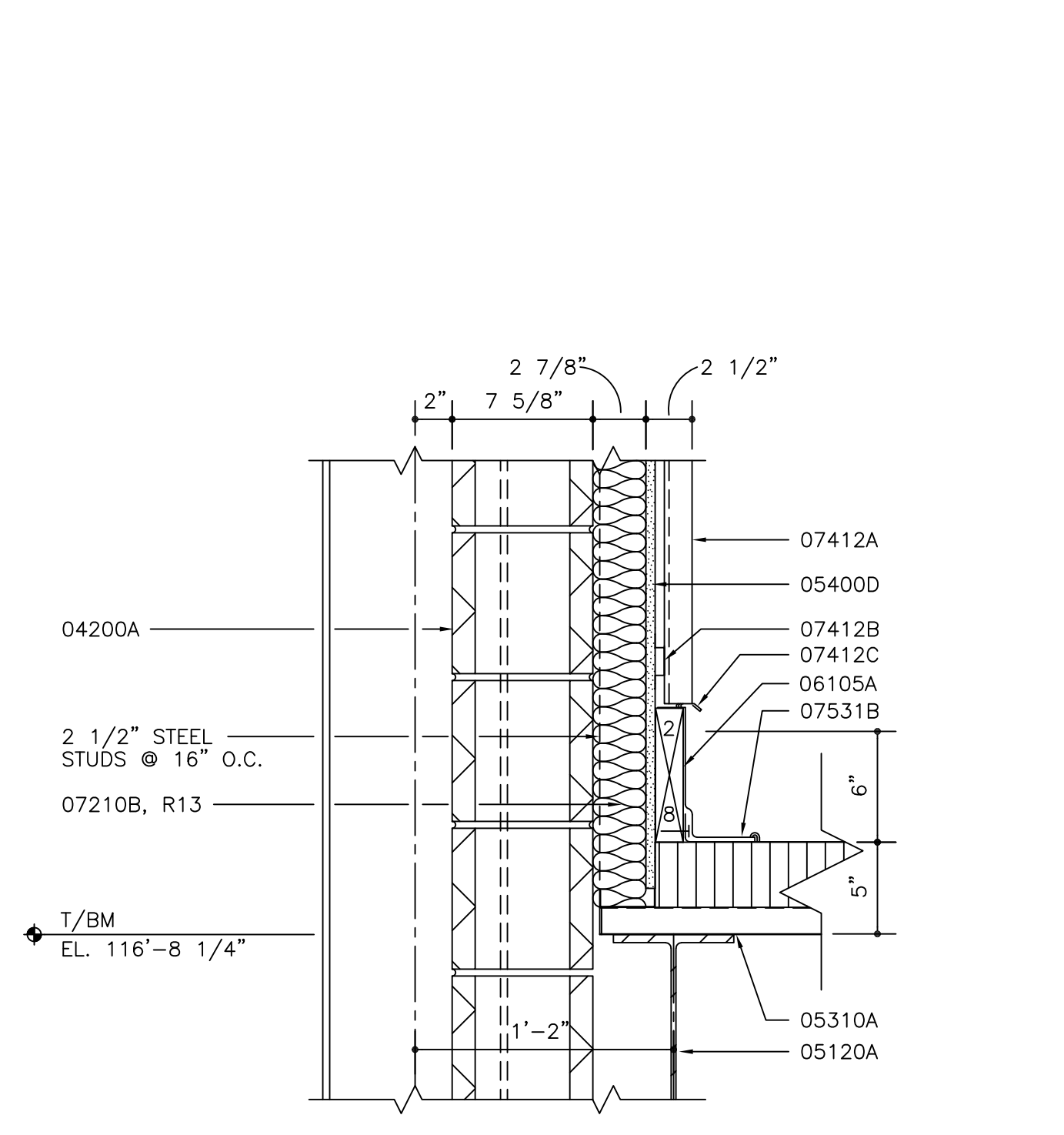
A7 DETAIL WEST WALL OF PARTS STORAGE @ ROOF, @ 8-F-M ONLY, REF. STRUCT.
SCALE: 1 1/2"=1'-0"



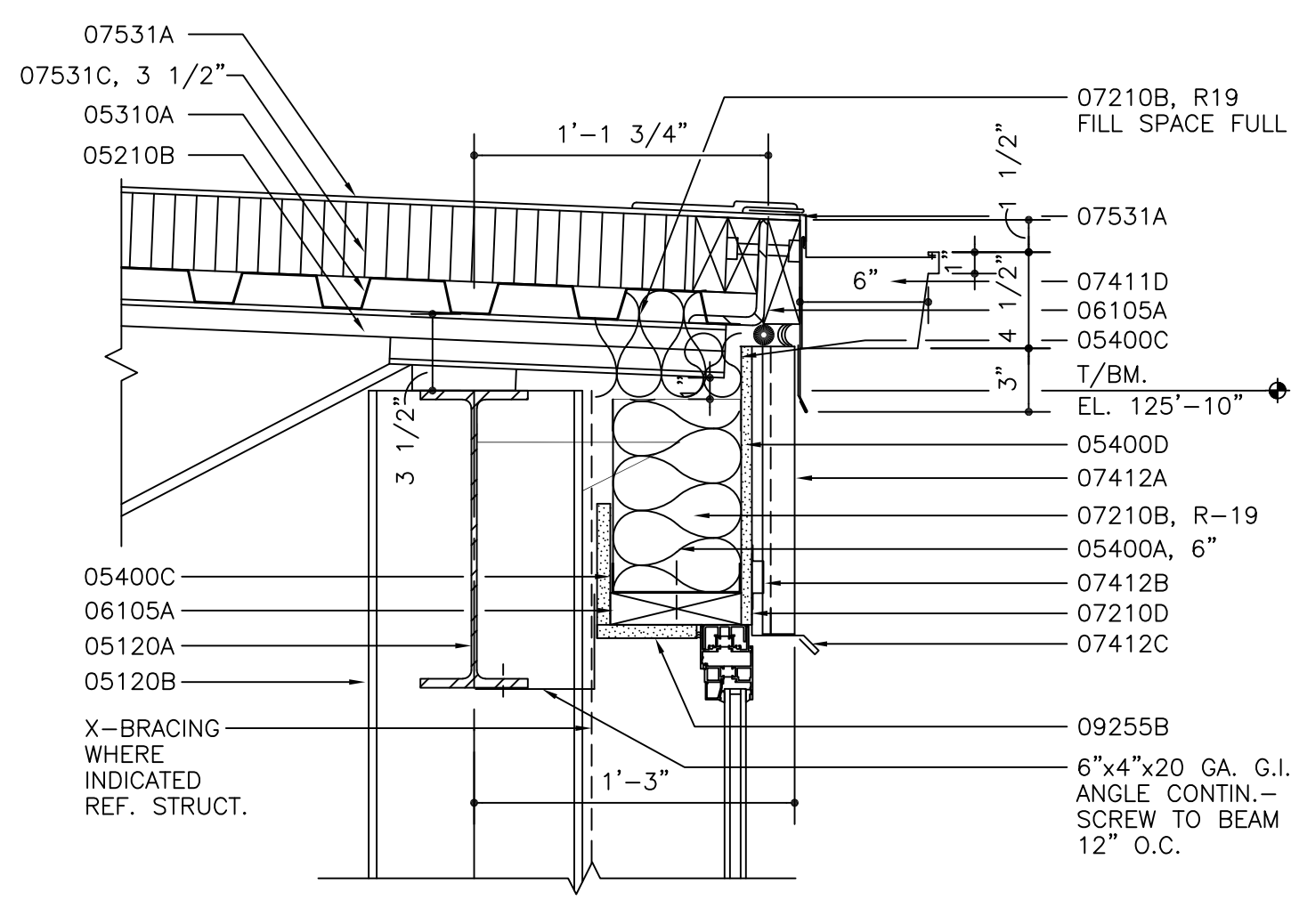
J12 DETAIL CLERESTORY WALL SECTION B-10-20
SCALE: 1 1/2"=1'-0"



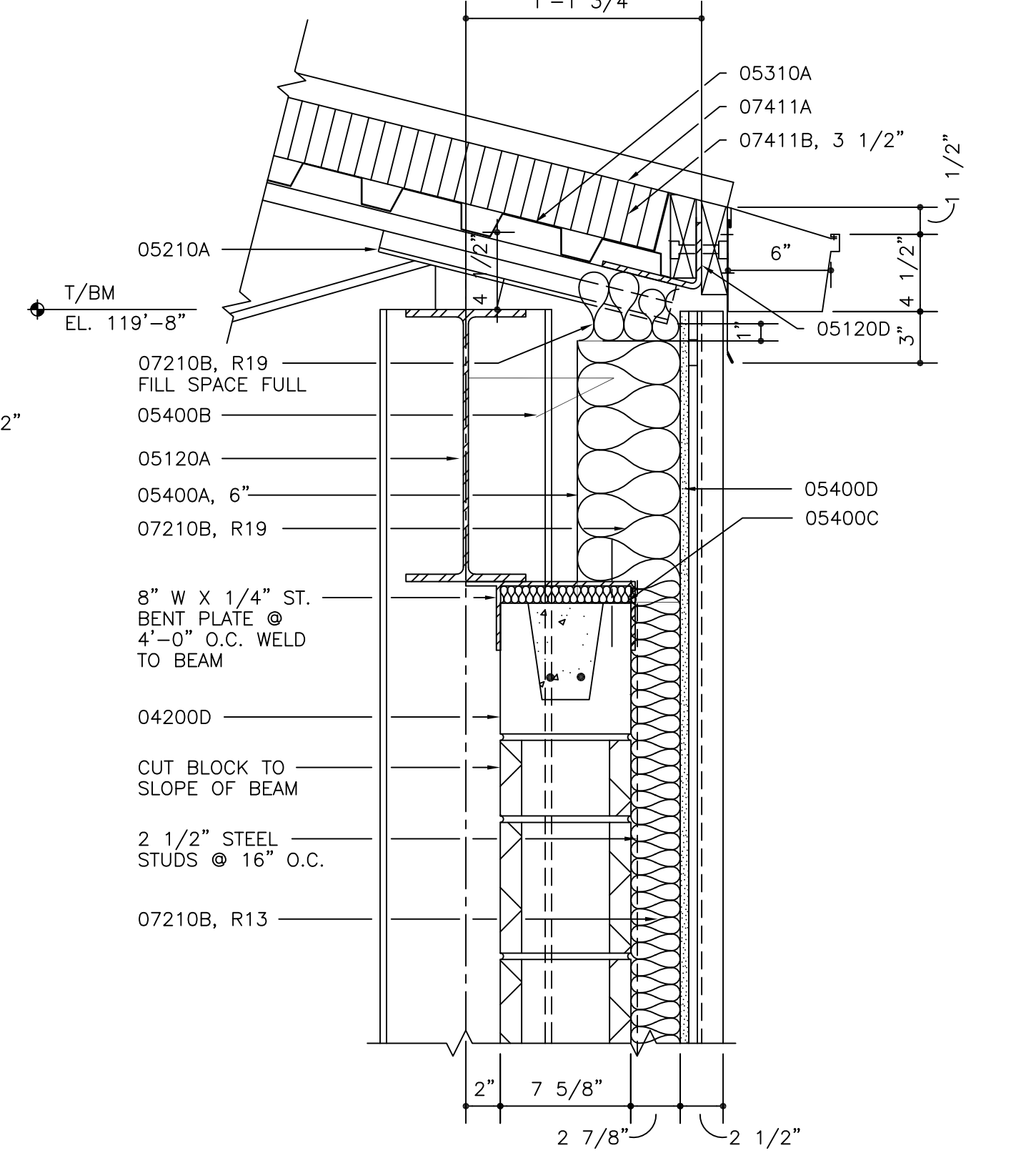
F12 DETAIL CLERESTORY WALL SECTION B-8-20
SCALE: 1 1/2"=1'-0"



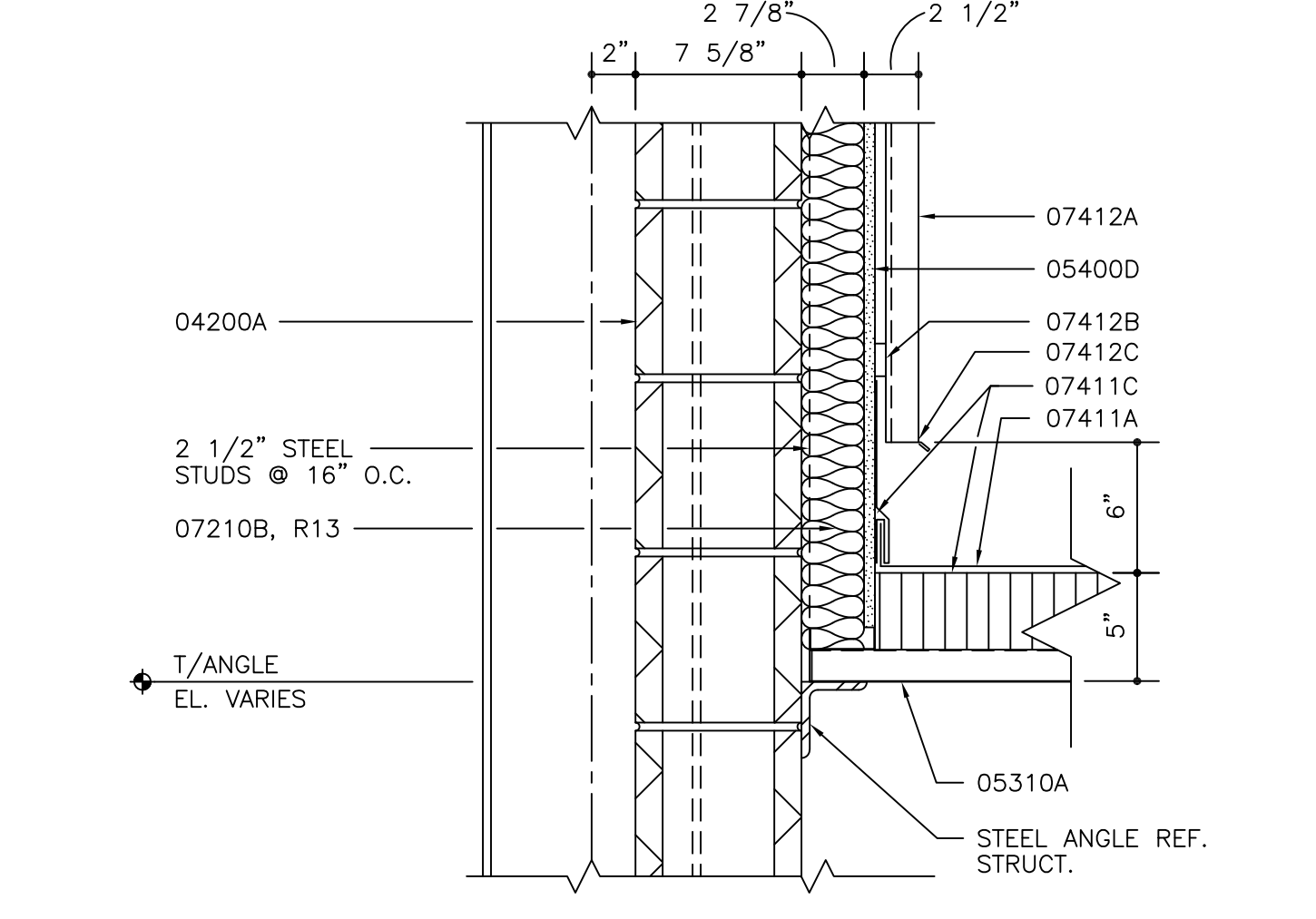
A12 DETAIL SOUTH WALL OF WORK BAY #8 @ C-12-16 ONLY, REF. STRUCT.
SCALE: 1 1/2"=1'-0"



J17 DETAIL CLERESTORY WALL SECTION B-8-10
SCALE: 1 1/2"=1'-0"

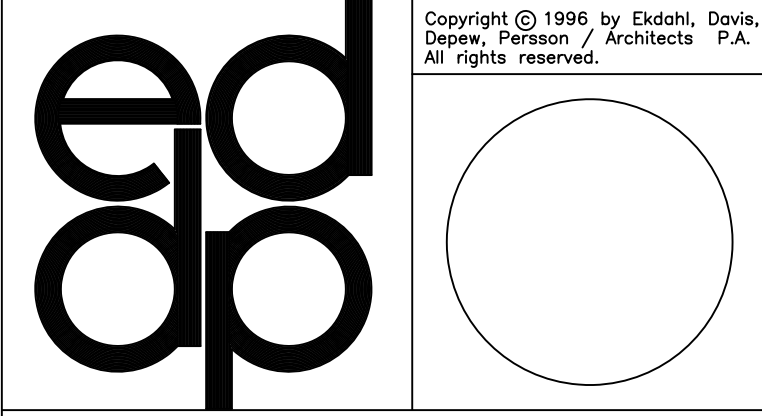


D17 DETAIL SOUTH WALL OF WORK BAY #8
SCALE: 1 1/2"=1'-0"



A17 DETAIL SOUTH WALL OF WORK BAY #8
SCALE: 1 1/2"=1'-0"

- ### KEYNOTES
- DIVISION 2 - SITE WORK**
 - 02200 EARTH WORK
 - A. Engineered fill
 - B. Moisture control fill
 - DIVISION 3 - CONCRETE**
 - 03300 CONCRETE
 - A. Reinforced concrete
 - B. Concrete Slab
 - C. Expansion Joint
 - DIVISION 4 - MASONRY**
 - 04200 UNIT MASONRY
 - A. Light weight concrete block, reinforced - ref. struct.
 - B. Split face concrete block - 4"
 - C. Solid concrete masonry sill - smooth face
 - D. Bond beam - ref. struct.
 - E. Copper fabric flashing
 - F. Weep holes - ref. spec.
 - G. Joint reinforcement
 - DIVISION 5 - METAL**
 - 05120 STRUCTURAL STEEL
 - A. Steel beam - ref. struct.
 - B. Steel column
 - C. Steel channel
 - D. Bent Plate
 - 05210 STEEL JOISTS
 - A. Steel joist - ref. struct.
 - B. Steel joist extension
 - 05310 STEEL DECK
 - A. Steel roof deck - ref. struct.
 - 05400 COLD FORMED METAL FRAMING
 - A. Steel studs - size & gauge noted
 - B. Vertical slide stud clips
 - C. Runner channel
 - D. Gypsum sheathing
 - 05500 METAL FABRICATIONS
 - A. Steel lintel - type & size noted
 - DIVISION 6 - WOOD AND PLASTICS**
 - 06105 MISCELLANEOUS CARPENTRY
 - A. Wood blocking - pressure treated
 - 06402 INTERIOR ARCHITECTURAL WOODWORK
 - A. Plastic laminate window stool
 - B. Interior wood trim
 - DIVISION 7 - THERMAL AND MOISTURE PROTECTION**
 - 07210 BUILDING INSULATION
 - A. Extruded polystyrene board - thickness noted
 - B. Mineral fiber batt - unfaced
 - C. Vapor retarder membrane
 - D. Air infiltration barrier
 - 07411 MANUFACTURED ROOF PANELS
 - A. Standing seam metal roof
 - B. Polyisocyanurate insulation - thickness noted
 - C. Metal trim/closure
 - D. Metal gutter
 - E. Metal downspout
 - F. Snow Guards
 - 07412 MANUFACTURED WALL PANELS
 - A. Preformed metal wall panel
 - B. Metal subgrid
 - C. Metal flashing/closure
 - 07531 EPDM SINGLE-PLY MEMBRANE ROOFING
 - A. EPDM membrane roofing
 - B. EPDM flashing
 - C. Polyisocyanurate foam roof insulation
 - 07710 MANUFACTURED ROOF SPECIALTIES
 - A. Metal coping
 - 07901 JOINT SEALANTS
 - A. Joint sealant
 - DIVISION 8 - DOORS AND WINDOWS**
 - 08360 SECTIONAL OVERHEAD DOORS
 - A. Insulated steel sectional overhead door
 - B. Overhead door track
 - 08410 ALUMINUM ENTRANCES AND STOREFRONTS
 - A. Aluminum framing - flush glazing
 - B. Aluminum door
 - 08520 ALUMINUM WINDOWS
 - A. Aluminum window
 - B. Aluminum sill
 - 08800 GLAZING
 - A. Insulating glass
 - B. Single pane glass
 - DIVISION 9 - FINISHES**
 - 09255 GYPSUM BOARD ASSEMBLIES
 - A. Steel studs - size & gauge noted
 - B. Gypsum board
 - C. Suspended grid & acoustic board
 - D. Exterior gypsum ceiling board
 - E. Furring channel
 - F. Runner channel
 - G. Deflection track
 - 09310 CERAMIC TILE
 - A. Glazed ceramic wall tile
 - B. Ceramic paver tile
 - 09511 ACOUSTICAL PANEL CEILING
 - A. Metal ceiling grid
 - B. Acoustical panel



Ekdahl, Davis, Depew, Persson/Architects, P.A.
700 Harrison Suite 1100 Topeka Kansas 66603
Telephone (913) 234-6664 Fax (913) 233-4660

BUS MAINTENANCE FACILITY
TOPEKA METROPOLITAN TRANSIT AUTHORITY
TOPEKA, KANSAS

EXTERIOR DETAILS

DATE: 01/10/97
ARCH. PROJECT NO. 95-36

A801

EXIST BUILDING - THIS SHEET FOR INFORMATION ONLY

C:\DWG\95-36\01L-901\A801\BASE 1 01/10/97.PK BASE SHEET