

RFP TM-20-01
Paratransit Buses
Questions and Answers #1
May 14, 2020

Q1. When it comes to wheelchair securements your RFP specifies three securement locations but not the type of securement system. What type is required?

A1. Please provide a 4-point securement system in all three securement locations.

Q2. What color would you like for your floor covering?

A2. Grey.

Q3. Will you be following Docket 90 issued by the Federal Transit Administration in addition to FMVSS 302?

A3. Yes.

Q4. Will you require at least a 5-year warranty for all vinyl seating materials?

A4. No.

Q5. Will you approve any particular vendor as a potential source for vinyl upholstery?

A5. No.

Q6. Will you allow an overall bus height of 115”?

A6. Any height will be considered, but 110” is preferred.

Q7. Should the wheelchair lift be in the front or rear of the bus?

A7. Front of the bus is preferred.

Q8. Will you allow 36”x36” tinted, non-opening, bonded windows?

A8. Yes.

Q9. How many passengers are you requesting?

A9. 5-6 Ambulatory passengers.

Q10. Can you provide a floor plan for your passenger seating?

A10. Yes. See pages 3-12

Q11. Is pre-wiring needed in your farebox installation space?

A11. Yes.

Q12. Will you allow a fix mounted step bumper for the rear door?

A12. Yes, but we would have to approve the design.

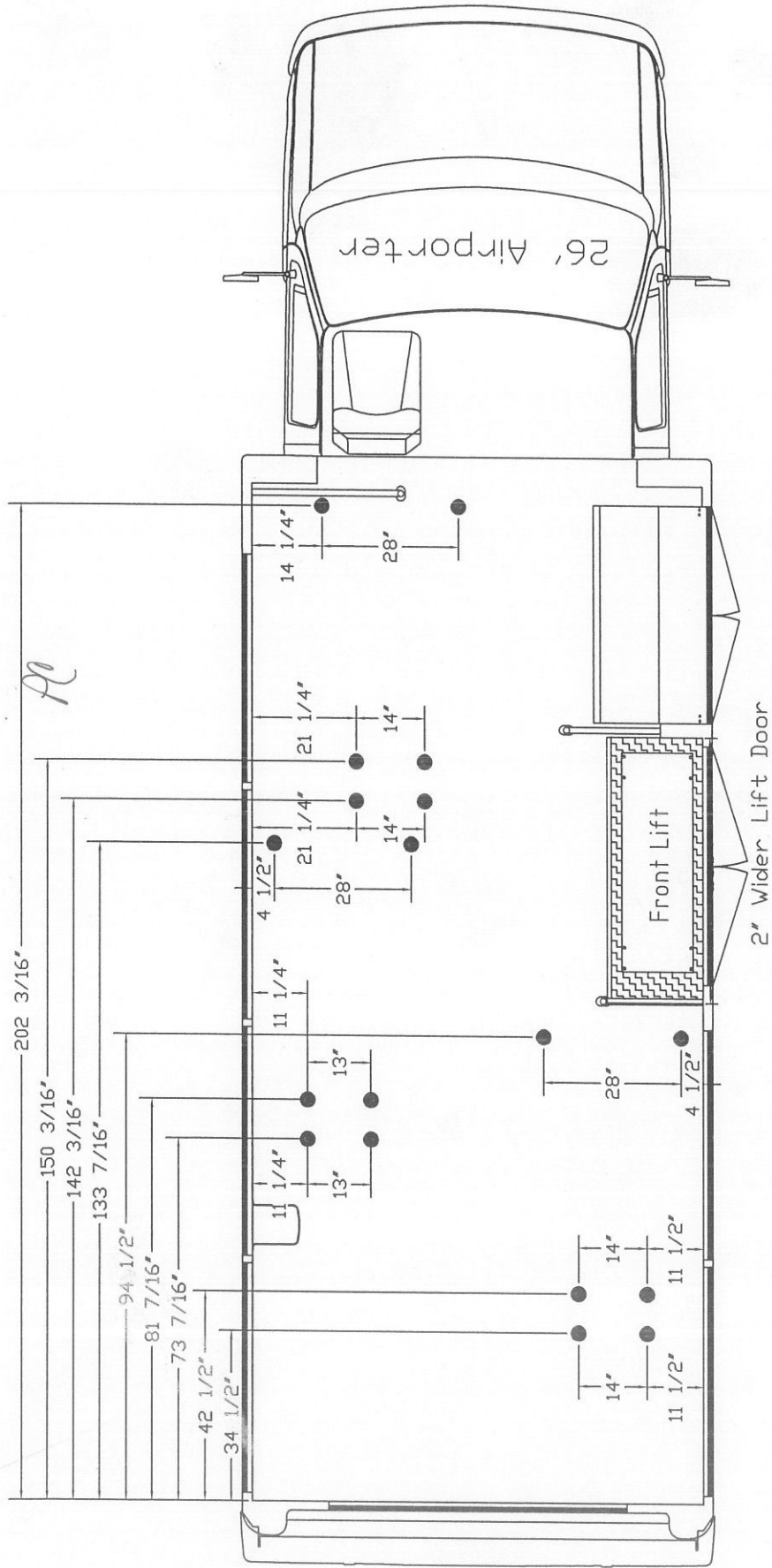
Q13. How many security cameras and what brand would you like to have quoted?

A13. 4-5 cameras at a minimum with the details to be determined at pre-production.

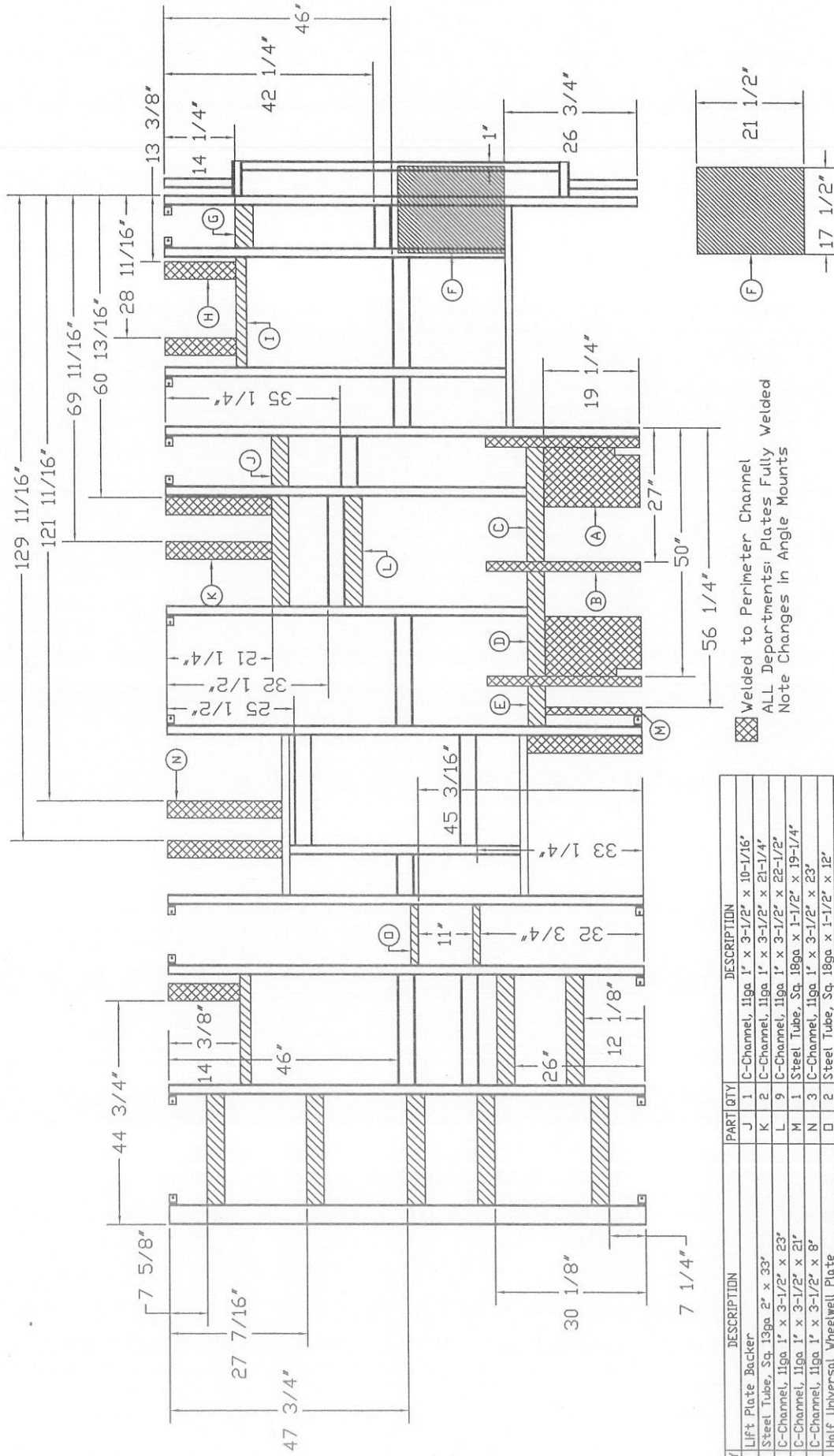
Q14. How many, material, location, and width of stripes on the buses would you like quoted?

A14. Decal package to be determined at pre-production. White bus all decals to be installed on windows. See page 13 for exterior layout.

Tie Down Location Unit 14929-14938




Supplemental Steel Print Unit 14929-14938



Welded to Perimeter Channel
ALL Departments: Plates Fully Welded
Note Changes in Angle Mounts

PART	QTY	DESCRIPTION	PART	QTY	DESCRIPTION
A	2	Lift Plate Backer	J	1	C-Channel, 11ga 1" x 3-1/2" x 10-1/16"
B	3	Steel Tube, Sq. 13ga 2" x 33"	K	2	C-Channel, 11ga 1" x 3-1/2" x 21-1/4"
C	1	C-Channel, 11ga 1" x 3-1/2" x 23"	L	9	C-Channel, 11ga 1" x 3-1/2" x 22-1/2"
D	1	C-Channel, 11ga 1" x 3-1/2" x 21"	M	1	Steel Tube, Sq. 18ga x 1-1/2" x 19-1/4"
E	1	C-Channel, 11ga 1" x 3-1/2" x 8"	N	3	C-Channel, 11ga 1" x 3-1/2" x 23"
F	1	Half Universal Wheelwell Plate	O	2	Steel Tube, Sq. 18ga x 1-1/2" x 12"
G	1	C-Channel, 11ga 1" x 3-1/2" x 8-1/2"			
H	3	C-Channel, 11ga 1" x 3-1/2" x 14-3/8"			
I	2	Steel Tube, Sq. 13ga 2" x 22"			

[illegible]

 Welded to Perimeter Channel
ALL Departments: Plates Fully Welded
Note Changes in Angle Mounts

FLOOR STRUCTURE AIRPORTER 12" DEEP STEPS

Model Type:
26' UNIVERSAL

Wheelbase:
190

Part Number:
BA041207 A

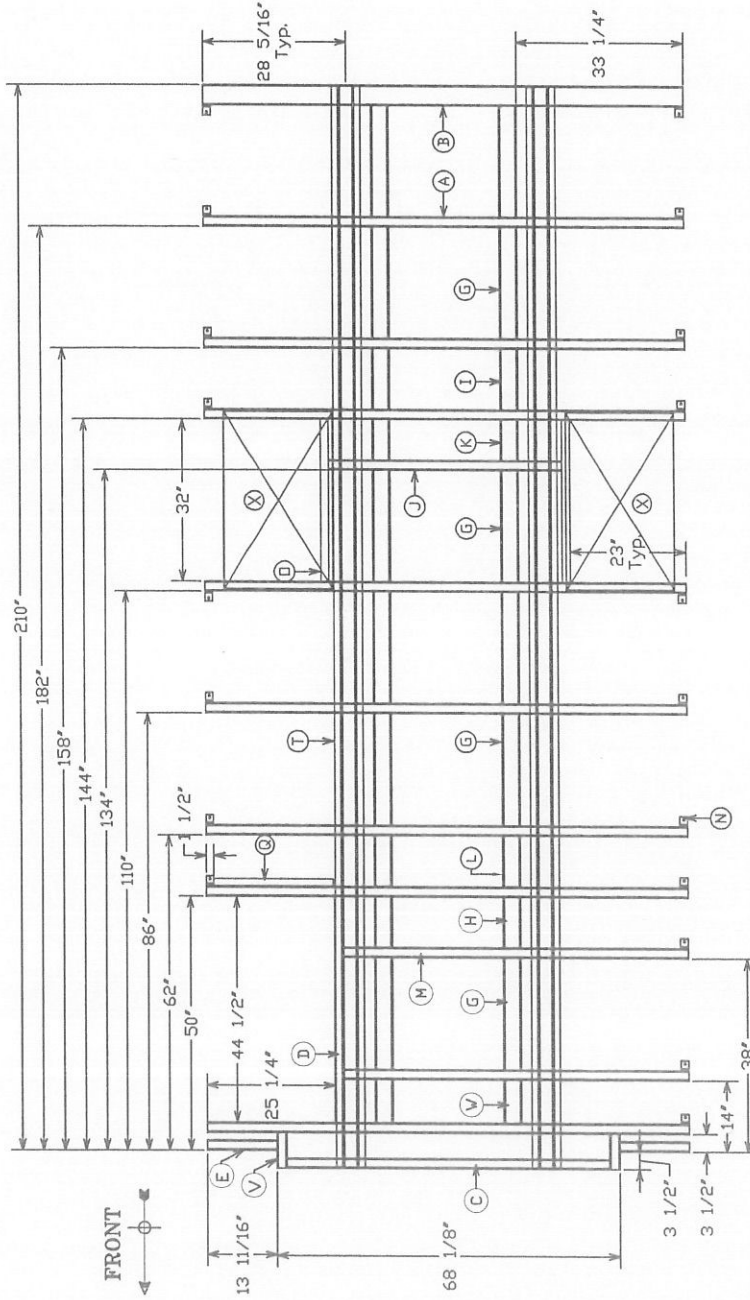
Floor Type: FLAT

Entry Door: 40

Date: Feb 11, 2005

DRAWN BY: NP

If Bus has Mor-Ryde System
Then See Supplemental Print
SP001F



Q) Install Brackets S (955064) After Floor
Is Set Into Chassis, Tighten Bracket To Chassis
Then Weld To Crossmember.

PART QTY	DESCRIPTION	PART NO.	CUT FROM	PART QTY	DESCRIPTION	PART NO.	CUT FROM
A 8	X-member, Tube Steel, Sq 13ga x 2' x 95-1/2'	-	BS020909	N 19	Angle Steel, 3/16" x 2' x 2' x 1 1/2"	BS020397	-
B 1	X-member, Tube Steel, Rect 13ga x 2' x 4' x 95-1/2'	BS020908	-	D 2	Tube, Sq, 18 ga 1-1/2' x 3"	BS020969	-
C 1	Tube, 13ga x 2' x 64 1/8"	-	BS020909	Q 1	Angle Steel, 11ga 1-1/2' x 1-1/2' x 23-1/2"	BS020385	-
D 1	Tube, Sq, 18ga 1-1/2' x 44-1/2"	-	BS020969	T 2	Hat Channel, 213-1/2"	BS020986	-
E 2	Tube, 13ga x 2' x 13-3/4"	-	BS020909	V 2	Tube, 13ga x 2' x 6-13/16"	BS020909	-
G 12	C-Channel, 11ga x 1' x 3 1/2' x 22"	-	BS020286	W 2	C-Channel, 11ga x 1' x 3 1/2' x 8 1/2"	BS020286	-
H 2	C-Channel, 11ga x 1' x 3 1/2' x 9-15/16"	-	BS020286	X 2	Wheel Well, Plate, 14ga x 21 1/2' x 35"	BS020331	-
I 2	C-Channel, 11ga x 1' x 3 1/2' x 12"	-	BS020286				
J 1	Tube, 13ga x 2' x 46-1/2"	-	BS020909				
K 2	C-Channel, 11ga x 1' x 3 1/2' x 8"	-	BS020286				
L 2	C-Channel, 11ga x 1' x 3 1/2' x 10-1/16"	-	BS020286				
M 2	Tube, 13ga x 2' x 68-3/4"	-	BS020909				

UNIVERSAL AIRPORTER BRIDGE KIT

PAGE 1 OF 2

Model Type:
Airporter 26'

Wheelbase:
190"

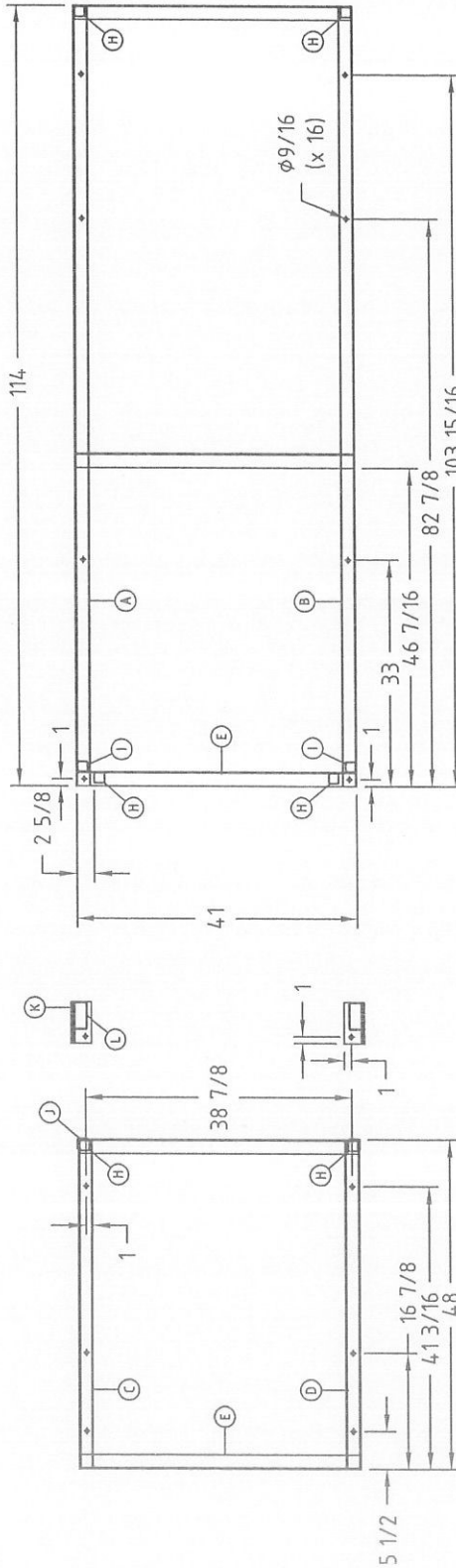
Part Number:
BA041208 B

Floor Type: Flat

Entry Door: 30"

Date: Oct. 28, 2008

DRAWN BY: D Buell



PART	QTY	DESCRIPTION	PART NO.	CUT FROM
A	1	C-Channel, R/S Front, 12 Ga x 2.07" x 8.14" x 114"	-	BS020654
B	1	C-Channel, R/S Front, 12 Ga x 2.07" x 8.14" x 114"	-	BS020654
C	1	C-Channel, R/S Rear, 12ga x 2.07" x 8.14" x 48"	-	BS020654
D	1	C-Channel, C/S Rear, 12Ga x 2.07" x 8.14" x 48"	-	BS020654
E	5	C-Channel, X-Member Supports 12Ga x 2.07" x 7.81" x 40-9/16"	-	BS020831
-	-	-	-	-
-	-	-	-	-
H	6	Tube Steel, Sq 18ga x 2" x 7-5/8"	-	BS020969
I	2	Tube Steel, Sq 18ga x 2" x 7-3/4"	-	BS020969
J	2	Angle Steel, 11ga x 1-1/2" x 8-1/8"	-	BS020385
K	2	Angle Steel, 1/4" x 2" x 3" x 6"	-	BS020464
L	2	Tube Steel, Rect. 2" x 4" x 6-7/8"	-	BS020908

UNIVERSAL AIRPORTER
BRIDGE KIT
PAGE 2 OF 2

Model Type:
Airporter 26'

Wheelbase:
190"

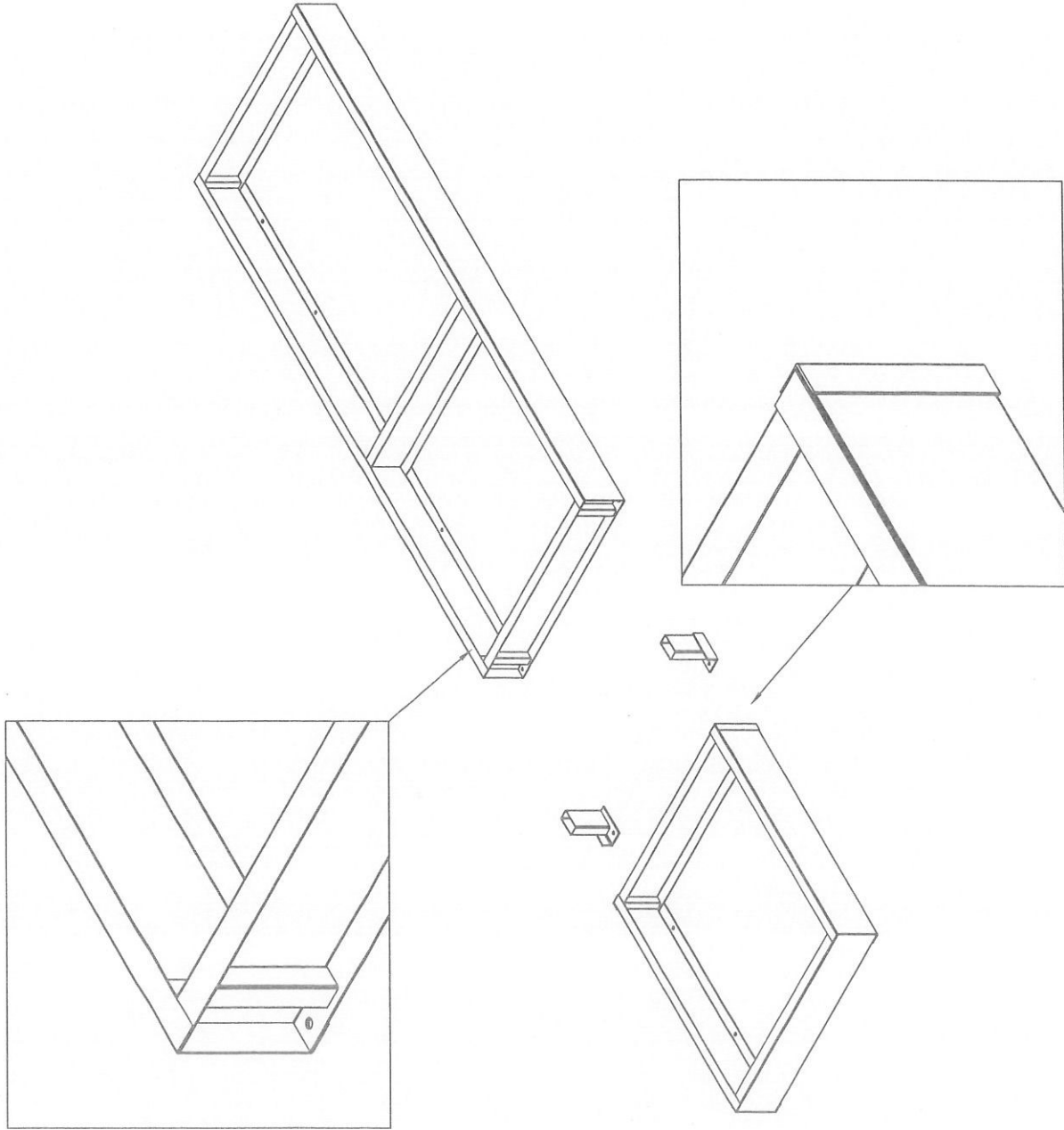
Part Number:
BA040208 B

Floor Type: Flat

Entry Door: 30"

Date: -

DRAWN BY: D Buell



RevNo	Revision note	Date	Signature	Checked
1				

SIDE STRUCTURE CURBSIDE FRONT LIFT

Model Type:
26' AIRPORTER

Wheelbase:
190"

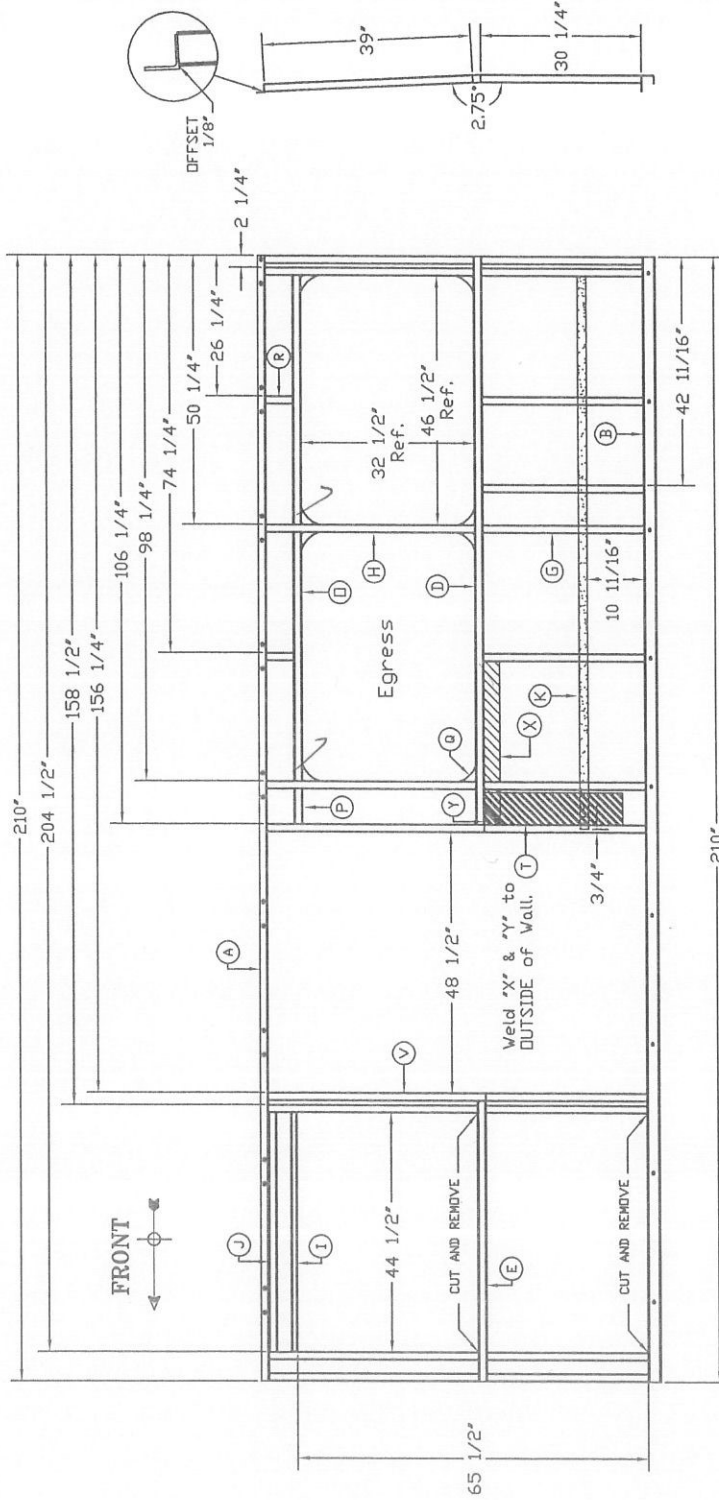
Part Number:
BA040857

Floor Type: **FLAT**

Entry Door: **40"**

Date: **Dec. 14, 2012**

DRAWN BY: **D. Buell**



NOTES:
1. VIEWED FROM INSIDE OF VEHICLE
2. CUT AND BEND PART J AT
LOCATION SHOWN. WELD TO WALL
AFTER WALL HAS BEEN ATTACHED TO
CHASSIS

PART QTY	DESCRIPTION	PART NO.	CUT FROM	PART QTY	DESCRIPTION	PART NO.	CUT FROM
A 1	Angle Steel, 11ga x 1-1/2" x 1-1/2" x 210"	BS020385		D 1	Tube Steel, Sq 18ga x 1-1/2" x 46-1/2"	BS020969	
B 1	Channel Steel, Floor Perimeter, 14ga x 210"			P 1	Tube, Sq 18ga x 1-1/2" x 6-1/2"	BS020969	
				Q 8	Plastic Window Radius	B-163	
D 1	Tube Steel, Sq 18ga x 1-1/2" x 210"			R 2	Tube Steel, Sq 18ga x 1-1/2" x 5"	BS020969	
E 1	Tube Steel, Sq 18ga x 1-1/2" x 52-1/4"			T 1	Flat Steel, 11ga x 6" x 26"	BS020150	
G 9	Tube Steel, Sq 18ga x 1-1/2" x 30-1/4"			V 2	Tube Steel, Sq 18ga x 1-1/2" x 70-7/8"	BS020969	
H 7	Tube Steel, Sq 18ga x 1-1/2" x 39"			X 1	Flat Steel, 11ga x 3" x 22-1/2"	BS020032G	
I 1	Tube, Rec, 16ga 1" x 1-1/2" x 44-1/2"			Y 1	Flat Steel, 11ga x 3" x 6-1/2"	BS020032G	
J 1	Tube, Sq 16ga 1 1/2" x 44-1/2"						
K 1	U-Channel, 1-5/8" x 7/8" x 103-3/8"						

Non-Galv. Parts to be Sprayed
Galvanize



General Description

SIDE STRUCTURE ROADSIDE

Model Type:
UNIVERSAL 26'

Wheelbase:
—

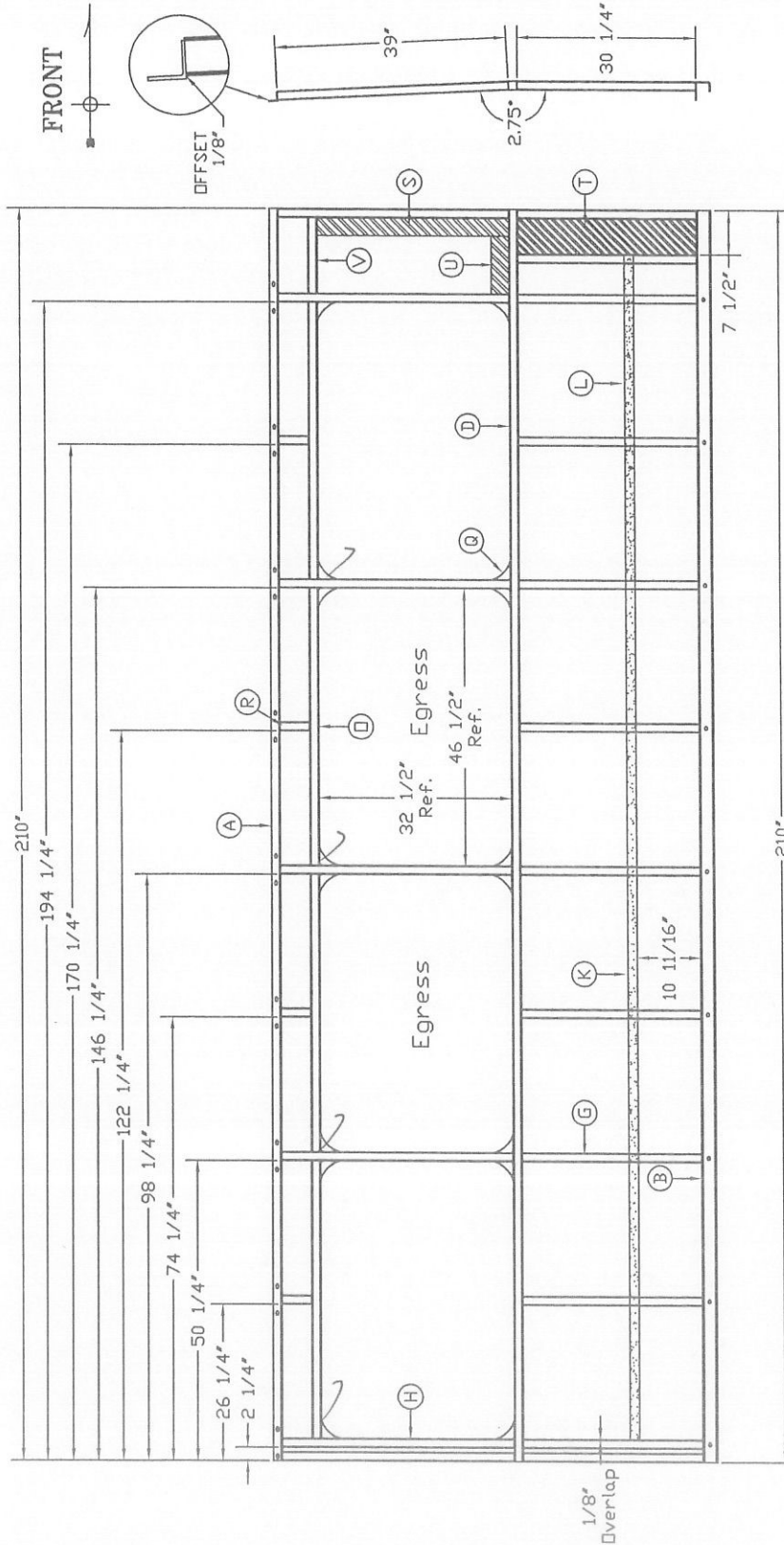
Part Number:
BA040828 A

Floor Type: FLAT

Entry Door:

Date: 11-AUG-09

DRAWN BY: CP



NOTES:
1. Viewed from Inside of Vehicle
2. Weld all Flat Steel Flush to Inside.

PART QTY	DESCRIPTION	PART NO.	CUT FROM	PART QTY	DESCRIPTION	PART NO.	CUT FROM
A 1	Angle 11ga x 1-1/2" x 1-1/2" x 210"	BS020485	BS020385	Q 16	Plastic Window Radius	B-163	
B 1	Channel, Floor Perimeter, 14ga x 210"	—	BS020933	R 4	Tube, Sq 18ga x 1-1/2" x 5"	—	BS020969
D 1	Tube, Sq 18ga x 1-1/2" x 210"	—	BS020969	S 1	Flat Steel, 11ga x 3" x 32-1/2"	—	BS020032
G 12	Tube, Sq 18ga x 1-1/2" x 30-1/4"	—	BS020969	T 1	Flat Steel, 11ga x 6" x 30-1/4"	—	BS020150
H 7	Tube, Sq 18ga x 1-1/2" x 39"	—	BS020969	U 1	Flat Steel, 11ga x 3" x 9-3/4"	—	BS020032
K 1	U-Channel, 1-5/8" x 7/8" x 120"	BX020055	—	V 1	Tube, Sq 18ga x 1-1/2" x 12-3/4"	—	BS020969
L 1	U-Channel, 1-5/8" x 7/8" x 78-7/8"	—	BS020055	Y 4	Flat Steel, 11ga x 3" x 22-1/2"	—	BS020032
O 4	Tube, Sq 18ga x 1-1/2" x 46-1/2"	—	BS020969				

ROOF STRUCTURE AIRPORTER FRONT LIFT

Model Type:

Airporter 26'

Wheelbase:

Part Number:

BA040856 A

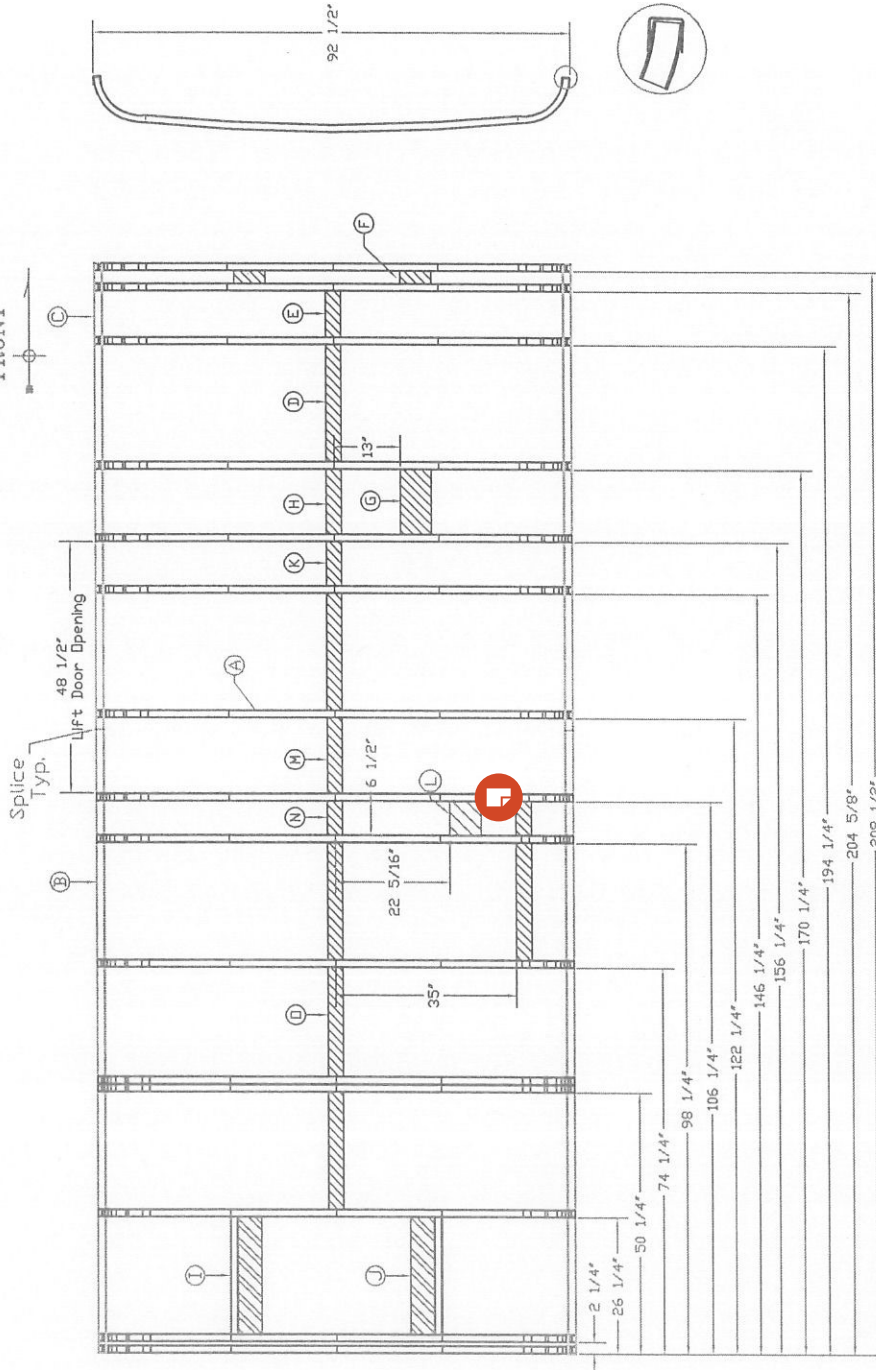
Floor Type: STD

Entry Door: 40"

Date: Aug. 11, 2009

DRAWN BY: D Buell

FRONT



Notes:
1. Viewed from exterior of vehicle.
2. Weld all flat steel flush to inside.

PART QTY	DESCRIPTION	PART NO.	CUT FROM	PART NO.	CUT FROM	PART QTY	DESCRIPTION	PART NO.	CUT FROM
1	15 Roof Bows: 92-1/4"	BS020798	-	N	2	Flat Steel, 11ga x 3' x 6-1/2"	BS020032		
2	Cap, U-Channel 16ga x 1-1/2" x 120"	BS020037	-	O	1	Tube Steel, Sq. 18 ga 1-1/2" x 20-1/2"	BS020032		
2	Cap, U-Channel 16ga x 1-1/2" x 90"	-	-						
5	Flat Steel, 11ga x 3' x 22-1/2"	BS020032	-						
1	Flat Steel, 11ga x 3' x 8-7/8"	BS020032	-						
2	Flat Steel, 11ga x 6' x 2-3/8"	BS020150	-						
1	Flat Steel, 11ga x 6' x 12-1/2"	BS020150	-						
1	Flat Steel, 11ga x 3' x 12-1/2"	BS020032	-						
2	Tube Steel, Rect 16ga 1" x 1-1/2" x 22-1/2"	BS020532	-						
1	Flat Steel, 11ga x 6' x 22-1/2"	BS020150	-						
1	Flat Steel, 11ga x 3' x 8-1/2"	BS020032	-						
1	Flat Steel, 11ga x 6' x 6-1/2"	BS020150	-						
1	Flat Steel, 11ga x 3' x 14-1/2"	BS020032	-						

