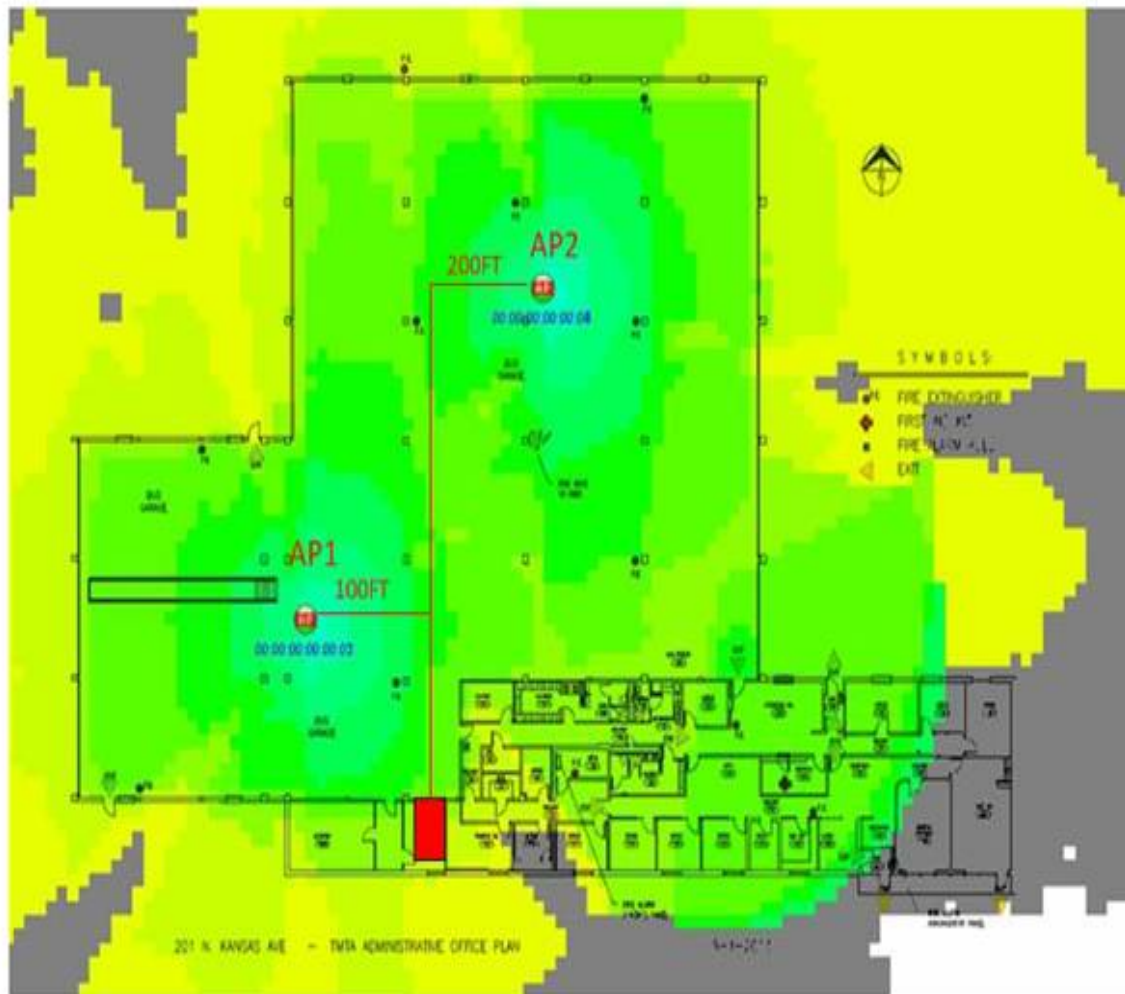


RFB TO-20-01  
Bus DVR Replacement  
Questions and Answers #2  
August 15, 2019

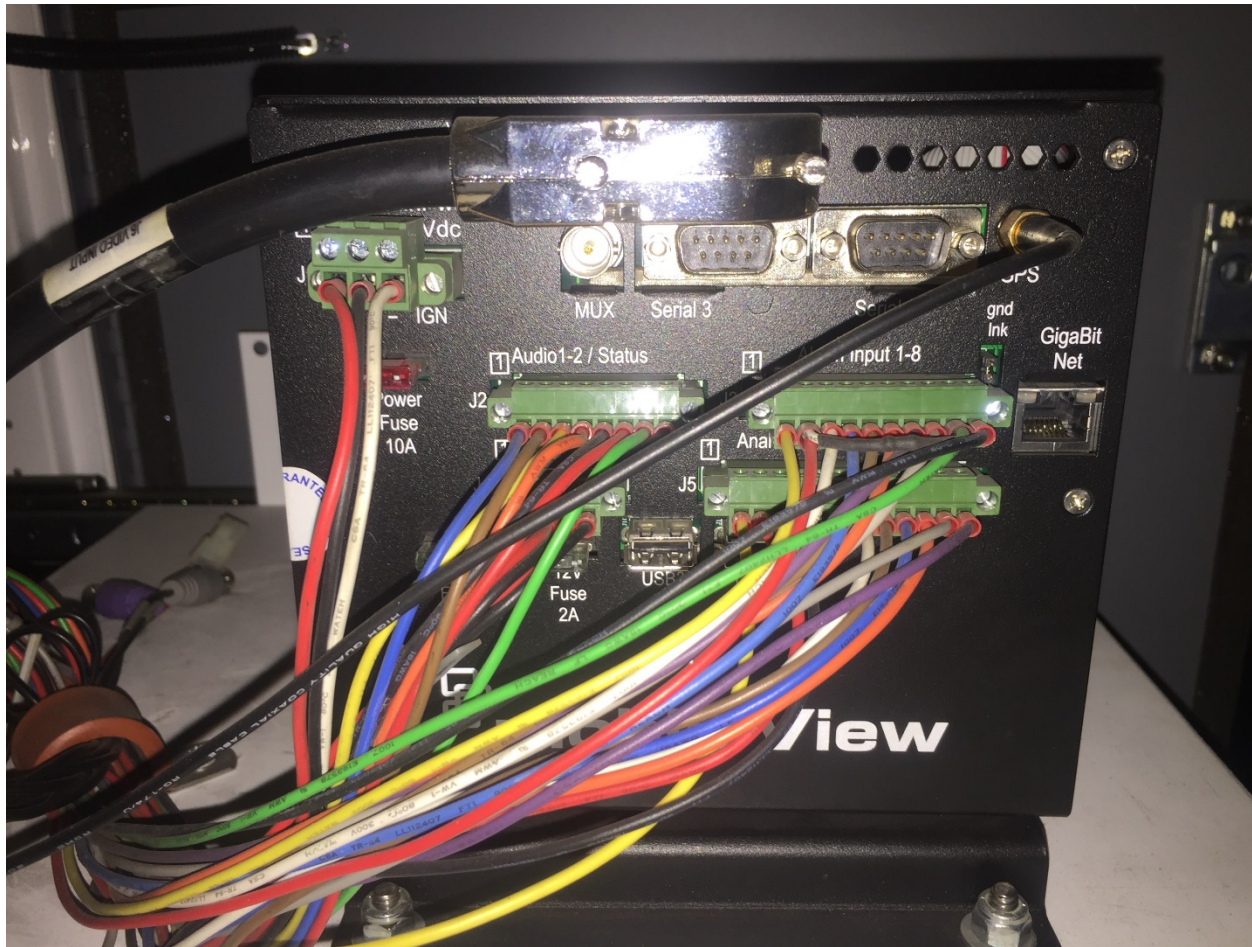
- Q1. Please provide the location of vehicles with available times for removal/installation.
- A1. Monday –6:00a – 6:00p 1-2 buses will be available for installation, Saturday 8:00a – 6:00p 12-14 buses, and Sunday 8:00a – 6:00p all 26 buses will be available for installation. Maintenance bays will be available.
- Q2. Please provide existing cellular modem model number and technical specifications.
- A2. We currently do not have a cellular modem in place. But we will by the time the DVR's will be scheduled to be installed.
- Q3. The camera part numbers listed in the RFP do not support audio, does the existing system have separate microphones for audio?
- A3. Yes, two separate mics.
- Q4. Does the existing DVR system include the following accessories?
- A. Event trigger.  
B. Sensor harness.  
C. GPS  
D. G-Force Sensor
- A4. A. Yes, a push button event trigger.  
B. No.  
C. Yes.  
D. No.
- Q5. On pg. 1, under Currently in Place, the RFB states: **“Metro currently uses Cisco 1602E for wireless infrastructure. Metro may upgrade the wireless infrastructure access points with 802.11ac.”** Will Topeka Metro please provide a site map showing the number of existing access points installed and their locations?
- A5. Yes, please see page 4 Site Map
- Q6. On pg. 1, listed under Metro Specifications, the RFB states: **“DVR must be compatible with current Metro cameras.”** Will Topeka Metro please provide images of camera cable connections on both the DVR and Camera ends for potential adaptors?
- A6. Yes, please see pages 5-8.

- Q7. On pg. 1, listed under Metro Specifications, the RFB states the following two items: **“Live video viewing from any bus at any time accessible through the internet. Ability to review video from each DVR without removing the hard drive.”** This will require 2 separate servers (1 server for wireless video downloading, and 1 server for live streaming). Does Topeka Metro currently have these servers in place, or are we required to include servers in our pricing?
- A7. We do not have these servers in place, they need to be included in your pricing. We do have virtual server environment available, that would be preferred over adding additional hardware servers.
- Q8. On pg. 7, Price Quote: **“Estimated Project Start Date.”** In order to provide the estimated project start date, what is the anticipated award date for this RFB?
- A8. Mid-September 2019.
- Q9. On pg. 7, Price Quote, the RFB states: **“Topeka Metro is tax exempt and will obtain a Project Exemption Certificate from the Kansas Department of Revenue. Do not include sales tax in your proposed price.”** With respect to your tax exemption status, can you please provide your Tax ID?
- A9. KS81VNM6UU
- Q10. Per Q&A #1, A5. States: **“The cellular modem with data plan already exists.”** Will the specifications, including brand/model of the existing cellular modem please be provided to ensure proper integration?
- A10. A cellular system is not currently installed but will be prior to the DVR’s being installed.
- Q11. Can you please provide Manufacturer and Model Numbers for wireless routers on the buses?
- A11. Wireless routers are currently not installed but will be by the time the DVR’s will be installed.
- Q12. For “Live video viewing” requirement, please detail all wireless equipment on board each bus and what equipment (if not currently present on each bus, such as cellular routers, antennas, etc.) the vendor would need to provide to meet this requirement.
- A12. Wireless routers are currently not installed but will be by the time the DVR’s will be installed. All that will be needed is an internet line with an active connection.
- Q13. Can you please identify which cameras are Audio enabled?
- A13. None.

- Q14. How many Audio channels does the agency wish to have on each vehicle?  
A14. We have two channels, which is all we need.
- Q15. Is there an anticipated project completion date?  
A15. No. Please indicate your estimated project completion date on the price quote form.
- Q16. Can you please list discreet inputs you would like recorded as “metadata”? Example- Turn Signals, Brakes, Headlights, etc.?  
A16. Turn signals, speed, and brakes.
- Q17. Is there currently a Rear-View system with Monitor on board any vehicles? Does the agency wish to have this capability on all vehicles?  
A17. No. List as an option with optional costs on the price quote form.
- Q18. Will Metro provide a work bay/area for the installation of the new DVRs?  
A18. Yes.
- Q19. Will answers to vendor questions be sent to each specific vendor, or will it be sent to all responders (such as in an addendum)?  
A19. Answers to questions will be sent to all responders.



Topeka Metro Site Map  
Q5. A5.



Topeka Metro  
Q6. A6.  
DVR Connections





Topeka Metro  
Q6. A6.  
Video Cables



Topeka Metro  
Q6. A6.  
Exterior Camera No Adapter Needed





Topeka Metro  
Q6. A6.  
Interior Camera with Adapter