

**TOPEKA METRO**

**REQUEST FOR BIDS  
Concrete Pads for Bus Stops  
Phase 9 Group 5  
TO-21-16**

**Appendix III  
Engineering Studies**

# TOPEKA METRO, TOPEKA KANSAS

## BUS STOPS

### PHASE 9.5

**KANSAS ONE-CALL:**  
**1-800-DIG-SAFE**  
 (1-800-344-7233)

Protect yourselves and your property against underground utility damage and liability.



Find out where the underground utility lines might be buried before you dig.

Anyone digging in Kansas must call before digging. The person who is doing the work is responsible for calling KOC. If the owner contracts with a professional excavator to do the excavation then the professional excavator is responsible for calling KOC.

You (the digger) will need to provide information about the work site when you call. This is a FREE service.

CALL BEFORE YOU DIG  
 IT'S THE LAW.  
 [Chapter 66.--PUBLIC UTILITIES  
 Article 18.--UTILITY DAMAGE PREVENTION]

LEGEND	
Saw Cut Line	— — — — —
Traffic Signal Line	— — — — — TS — — — — —
Underground Telephone Line	— — — — — OHT — — — — —
Overhead Telephone Line	— — — — —
Overhead Cable	— — — — — OHC — — — — —
Underground Cable	— — — — — UC — — — — —
Overhead Electric Line	— — — — — OHP — — — — — OHP
Underground TV Cable	— — — — — UTV — — — — — UTV
Overhead TV Line	— — — — — OHTV — — — — — OHTV
Underground Electric Line	— — — — — UE — — — — —
Water Line smaller than 12"	— — — — — W — — — — —
Water Line larger than 12"	Existing: — — — — — Proposed: — — — — —
Gas Line	— — — — — G — — — — —
Sanitary Sewer	— — — — — SAN — — — — — SAN
Storm Sewer	Existing: — — — — — Proposed: — — — — —
Fiber Optic Line	— — — — — UFO — — — — — UFO
Centerline	— — — — —
Right-of-Way Line	— — — — —
Property Line	— — — — —
Lot Line	— — — — —
Chain link Fence	— — — — —
Wood Fence	— — — — —
Wire Fence	— — — — — X — — — — —
Railroad Tracks	— — — — —
Section Corner	△
Control Point	◆
Property Pin	● SET ● FOUND
Power Pole	■
Utility Pole	○
Street Light	☀
Guy Pole	□
Guy Wire	→
Fire Hydrant	⊕
Water Meter	⊗
Water Valve	⊕
Gas Meter	⊗
Gas Valve	⊕
Mail Box	Ⓜ
Existing Storm Inlet	■
Existing Manhole	Ⓢ San Ⓣ Storm
Existing Traffic Manhole Sign	Ⓣ
Tree	☁
Stump	✂
Shrub	✳
Elec. Pedestal	Ⓜ
Elec. Manhole	Ⓜ
Telephone Manhole	Ⓜ TEL
Telephone Pedestal	Ⓜ TEL
TV Pedestal	Ⓜ TV
Sprinkler Head	Ⓜ
Tee	— — — — —
Cross	— — — — —
Bend	— — — — —
Long Sleeve	— — — — —
Reducer	— — — — —
Cap or Plug Waterline	— — — — —
Corporation Stop Valve	● cs

**Cable TV**  
 Cox Communications  
 931 SW Henderson Rd.  
 Topeka, KS 66615  
 Glenn Calhoun  
 (785)215-6705  
 (785)207-1693  
 glen.calhoun@cox.com

**Electric**  
 Evergy  
 PO Box 889  
 4001 NW 14th St.  
 Topeka, KS 66603  
 Aaron Spreer  
 (785)865-4850  
 (785)557-6300  
 aaron.spreer@evergy.com

**Fiber Optic - AT&T Transmission**  
 AT&T Services, Inc.  
 203 East Ave. A  
 Salina, KS 67401  
 Kelly Kuntz  
 (785)203-0046  
 kk1834@att.com

**Gas**  
 Kansas Gas Service  
 P.O. Box 3538  
 200 E 1st St.  
 Topeka, KS 66601  
 Dawn Hecker  
 (785)431-4251  
 dawn.hecker@onegas.com  
 For Gas Leaks 1-888-482-4950  
 911 must also be called immediately

**Telephone**  
 AT&T  
 220 SE 6th St., Rm 360  
 Topeka, KS 66603  
 Randall Nicely  
 (785)276-5377  
 RN0380@att.com

**Fiber Optic - Giant Communications**  
 Giant Communications  
 515 S Kansas Ave. Suite 210  
 Topeka, KS 66603  
 Lance Lyman  
 (785)362-3312  
 lancelyman@giantcomm.net

**Sanitary**  
 City of Topeka, WPC Div.  
 1115 NE Poplar St.  
 Topeka, KS 66616  
 Darrin A. Coffland  
 (785)368-2467  
 dcoffland@topeka.org

**Storm Sewer**  
 City of Topeka  
 Utilities Dept.  
 1115 NE Poplar St.  
 Topeka, KS 66616  
 Zach Stueve  
 (785)368-3122  
 zstueve@topeka.org

**Telephone/Fiber Optics**  
 Verizon/MCI  
 Jeffrey Wiard  
 (620)242-6647  
 Jeffrey.Wiard@versionwireless.com

**Water**  
 City of Topeka, Water Dist.  
 3245 NW Waterworks Dr.  
 Topeka, KS 66606  
 Duncan Theuri  
 (785)368-0152  
 dtheuri@topeka.org

**Fiber Optic - City of Topeka**  
 City of Topeka, Info. Tech.  
 620 SE Madison St., 3rd Floor  
 Topeka, KS 66603  
 Mark Biswell  
 (785)368-3718  
 mbiswell@topeka.org

**Traffic Signal**  
 City of Topeka, Traffic Ops.  
 927 NW Harrison St.  
 Topeka, KS 66612  
 Duane Morris  
 (785)368-3913  
 dmorris@topeka.org

**UTILITY OWNERS**

**Fiber Optic - Centurylink CLEC**  
 Centurylink CLEC  
 100 Centurylink Dr.  
 Monroe, LA 71203  
 Luke Hempler  
 (816)308-9639  
 luke.hempler@centurylink.com

**Fiber Optic- USD 501**  
 USD 501, Info. Tech.  
 1900 SW Hope St.  
 Topeka, KS 66604  
 Dickie Hanson  
 (785)438-4750  
 dhanson@tps501.org

**Fiber Optic- KsFiberNet**  
 Kansas Fiber Network LLC  
 10875 Benson, Suite 250  
 Overland Park, KS 66210  
 Brad Burger  
 (913)213-2937  
 bburger@ksfiber.net

**GENERAL NOTES:**

- All Construction Methods and Materials Used in the Construction of the Improvements Covered by these Plans Shall be in Accordance with the Project Specifications and the City of Topeka and Shawnee County Standard Technical Specifications, Latest Addition, on File at the City of Topeka Engineer's Office.
- The Location of All Underground Utilities May Vary from what is Indicated on These Plans. It Shall be the Contractor's Responsibility to Coordinate with Utility Owner to Locate and Flag All Underground Utilities Whether Indicated or Not. No Excavation Shall be Permitted in the Area of Underground Utilities Until All Such Utilities Have Been Located and Identified to the Satisfaction of All Parties. Any Damage to the Utility Shall be Repaired or Replaced by the Utility Company at the Expense of the Contractor.
- The Cross Slope on All Sidewalks Shall Not Exceed 2%.
- All Property Pins Disturbed By Construction Shall be Replaced by a Professional Land Surveyor. This Work Shall be Performed at the Expense of the Contractor.
- Full Depth Sawcuts Shall be Used to Remove a Portion of Pavement or Curb and Gutter. All Sawcuts Shall be Full Depth and Shall be Performed at the Expense of the Contractor.
- New Signs shall Comply with Required Clearance from Sidewalk, Public Right of Way and Comply with Required Sight Distance.
- The Contractor is required to obtain a Traffic Disruption permit from the City of Topeka Engineering Division (785 368-3842) a minimum of 48 hours in advance of any work that will restrict or disrupt pedestrian or vehicular travel in the public right-of-way. All traffic control shall conform to the Manual on Uniform Traffic Control Devices and City of Topeka standards.

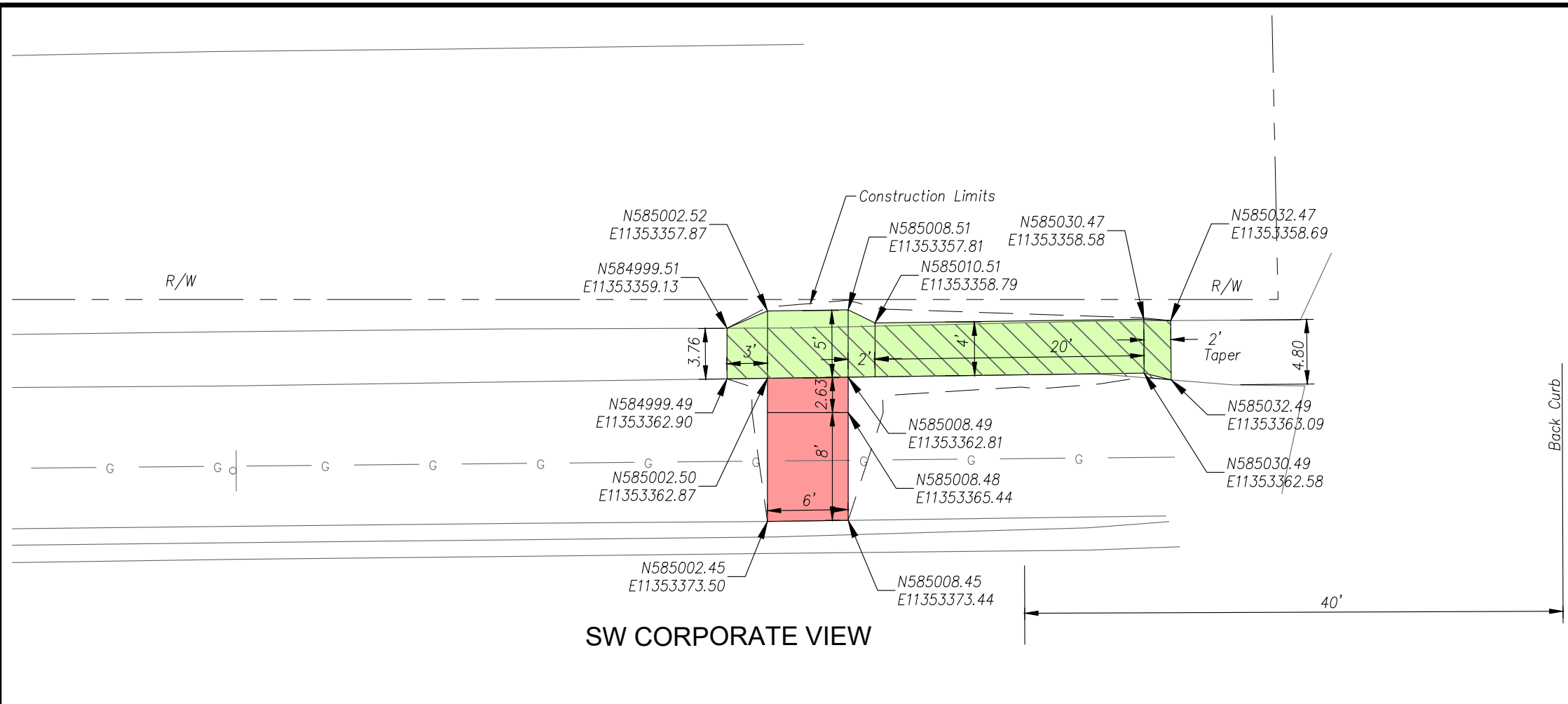
PLANS PREPARED BY:

cfse.com 2930 SW Woodside Dr. Topeka, KS 66614  
 t: 785-272-4706 f: 785-272-4736

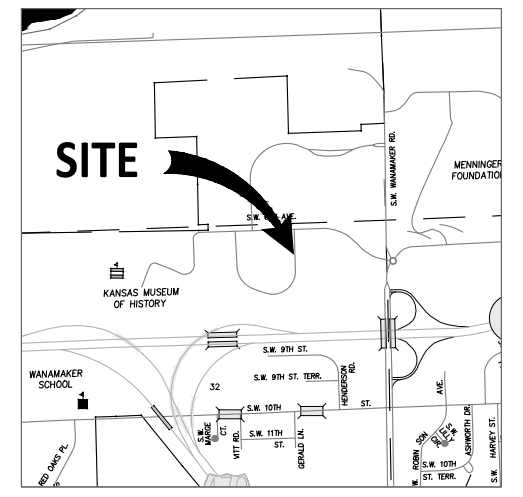
**TITLE SHEET**  
**PHASE 9.5**

DATE: Jan. 2020  
 SHEET: 01 of 23  
 PROJ.: 19-5044

J:\2015Proj\155044 (2019 PH 9.5)\CADD\15-5044 ph 9.5 Title Sheet.dwg, Title 9.5, 3/12/2021 4:39:52 PM

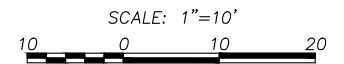
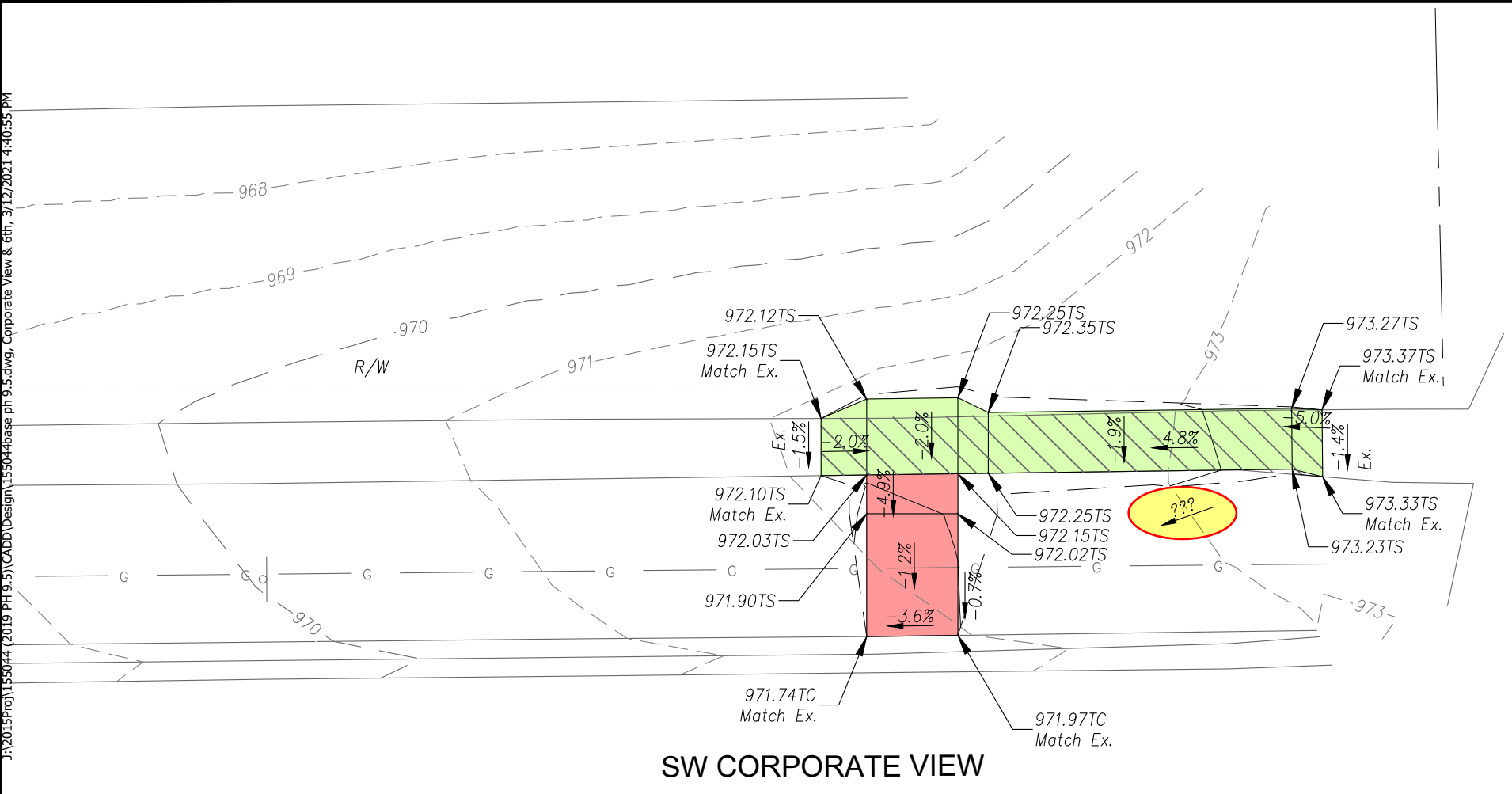


SW 6TH AVE.



- CONTROL:  
NAD 83 KRCS ZONE 11  
NAVD 88
- CP 950701 SET 1/2" REBAR W/CAP (CFS CONTROL)  
N: 584888.269 E: 11353366.136 EL: 966.08  
1) EAST SIDE N-S WALK 2.0' W  
2) NE COR TALLGRASS MED BLDG SGN .5' SW  
3) IN LINE W/NORTH EDGE E-W WALK TO WEST
- CP 950702 SET 1/2" REBAR W/CAP (CFS CONTROL)  
N: 584762.880 E: 11353373.808 EL: 956.99  
1) WEST B/C CORPORATE 2.0' E  
2) EAST EDGE N-S WALK 8.2' W  
3) IN LINE W/SOUTH FACE TALLGRASS MED BLDG

J:\2015Proj\155044 (2019 PH 9.5)\CADD\Design\155044base ph 9.5.dwg, Corporate View & 667, 3/12/2021 4:40:55 PM



LEGEND

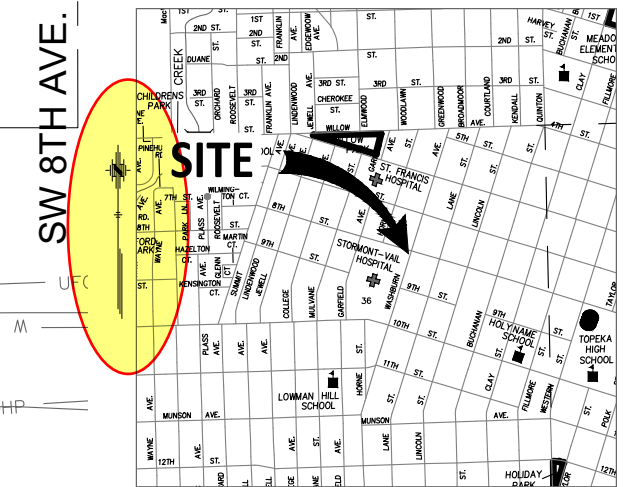
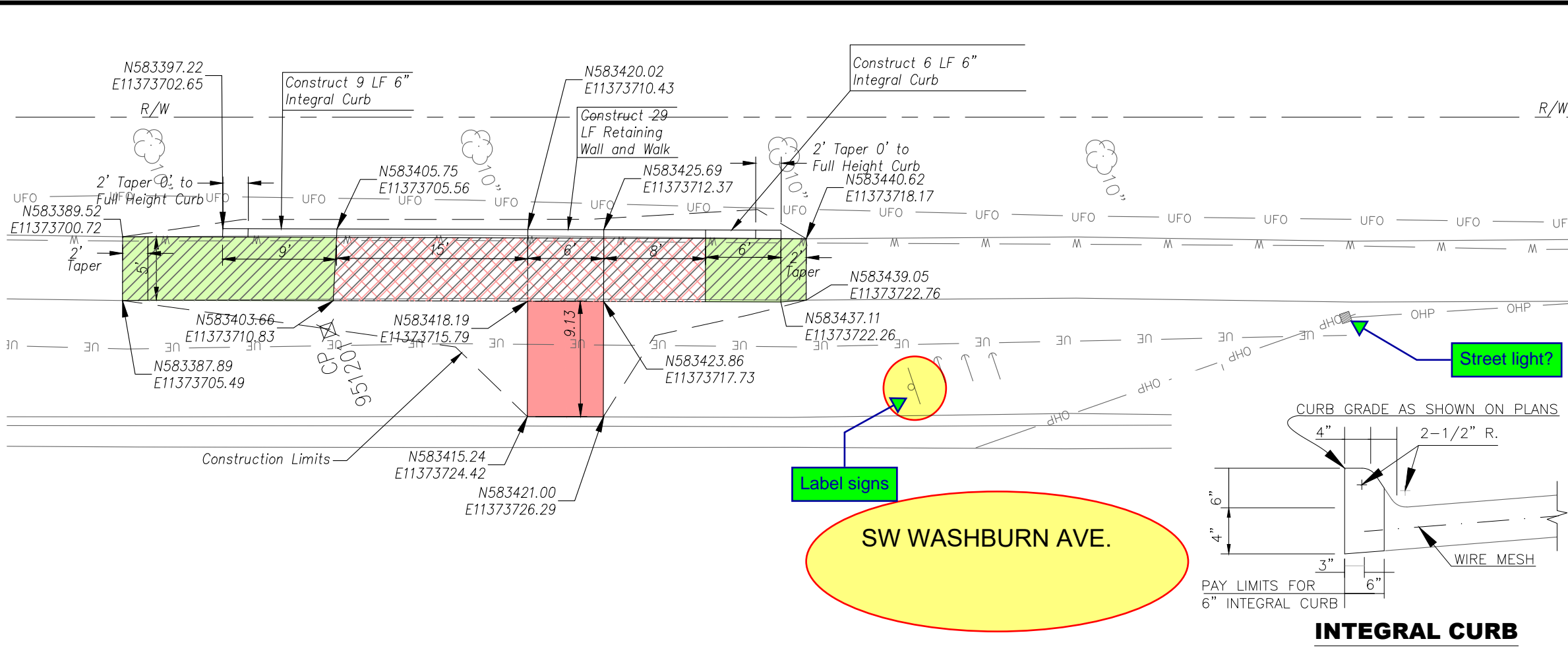
- Construct 5" Non-Reinforced Pad w/ 4" AB-3
- Conc. Sidewalk Removal
- Construct 4" Conc. Sidewalk

TP Top of Pavement  
TS Top of Sidewalk

Note:  
1. All grading side slopes shall be a 6:1 unless noted on plan.

**kericksen**  
Mar 19, 2021

<b>SW 6th AVE. &amp; SW CORPORATE VIEW (OB)(MBW)</b> (Standing Pad)		<b>CFS ENGINEERS</b> cfse.com 2930 SW Woodside Dr. Topeka, KS 66614 o. 785-272-4705 f. 785-272-4739
NOTE: TMTA, Phase 9.5		
CFS PROJECT # 15-5044	DATE: 12/2/19	PROJECT MANAGER: KH
		SHEET 1 OF 1

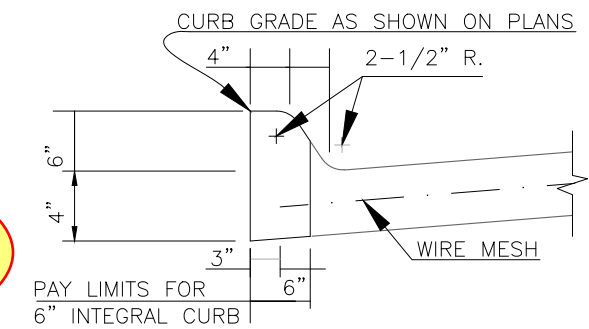


VICINITY MAP  
NO SCALE

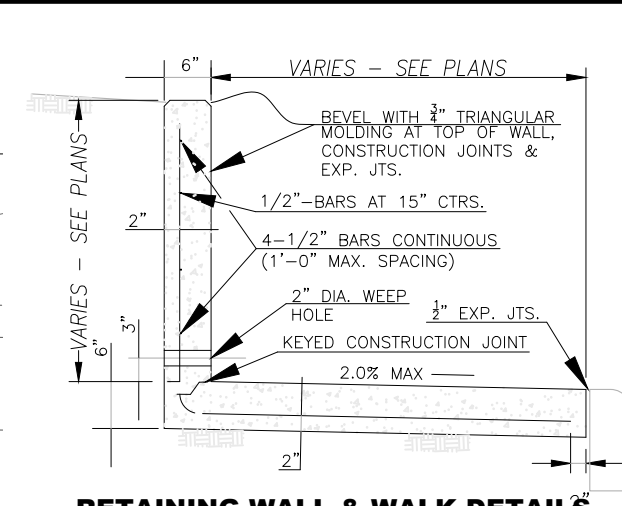
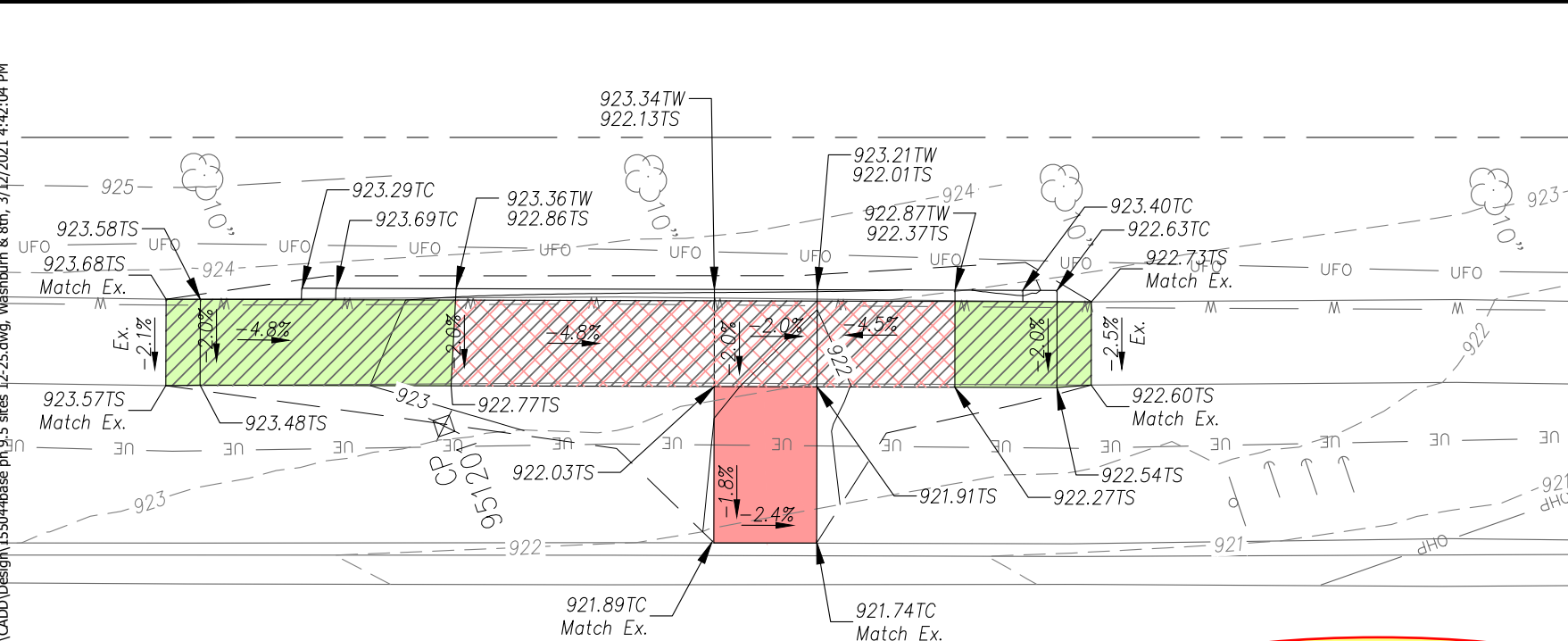
CONTROL:  
NAD 83 KRCS ZONE 11  
NAVD 88

CP 951201 SET 1/2" REBAR W/CAP (CFS CONTROL)  
N: 583402.507 E: 11373712.918 EL: 923.22  
1) EAST EDGE WALK WEST SIDE WASHBURN 2.55' W  
2) NORTH FACE 2' CONC LP BASE 39.40' SSW  
3) EAST FACE 15" TREE 18.7' NW

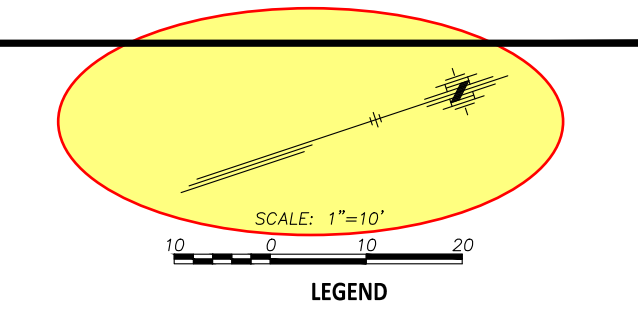
CP 951202 SET 1/2" REBAR W/CAP (CFS CONTROL)  
N: 583520.292 E: 11373746.497 EL: 920.07  
1) C WASHBURN 29.0' E  
2) C 8TH TO WEST 43.0' N  
3) SE COR CURB INLET 4.5' ENE



INTEGRAL CURB



RETAINING WALL & WALK DETAILS



LEGEND

TP Top of Pavement  
TS Top of Sidewalk

NOTE:  
▶ THIS TYPE OF WALL MAY BE USED TO A MAXIMUM HEIGHT OF 3'-0".  
▶ WEEP HOLES AT A MAXIMUM OF 15' CENTER TO CENTER WITH COARSE AGGREGATE PLACED AT EACH WEEP HOLE 18" IN ALL DIRECTIONS ABOVE FLOW LINE.  
▶ CONCRETE SHALL BE CLASS "A" THROUGHOUT WITH GRADE 40 REINFORCING.  
▶ PLACE 1/2" HARDWARE SCREEN AT WEEP HOLES TO RETAIN AGGREGATE.

Note:  
1. All grading side slopes shall be a 6:1 unless noted on plan.

kericksen  
Mar 19, 2021

**SW WASHBURN AVE. & SW 8TH AVE. (OB)(SW)**  
(Standing Pad)

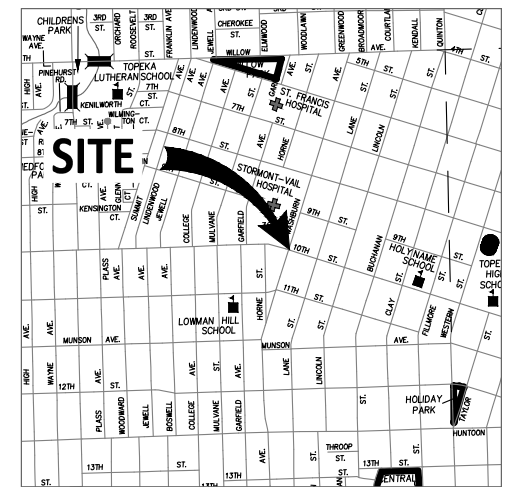
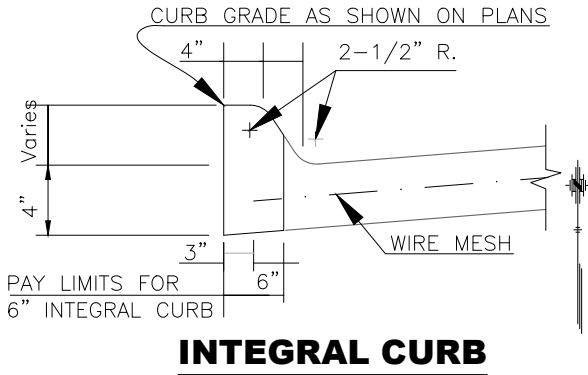
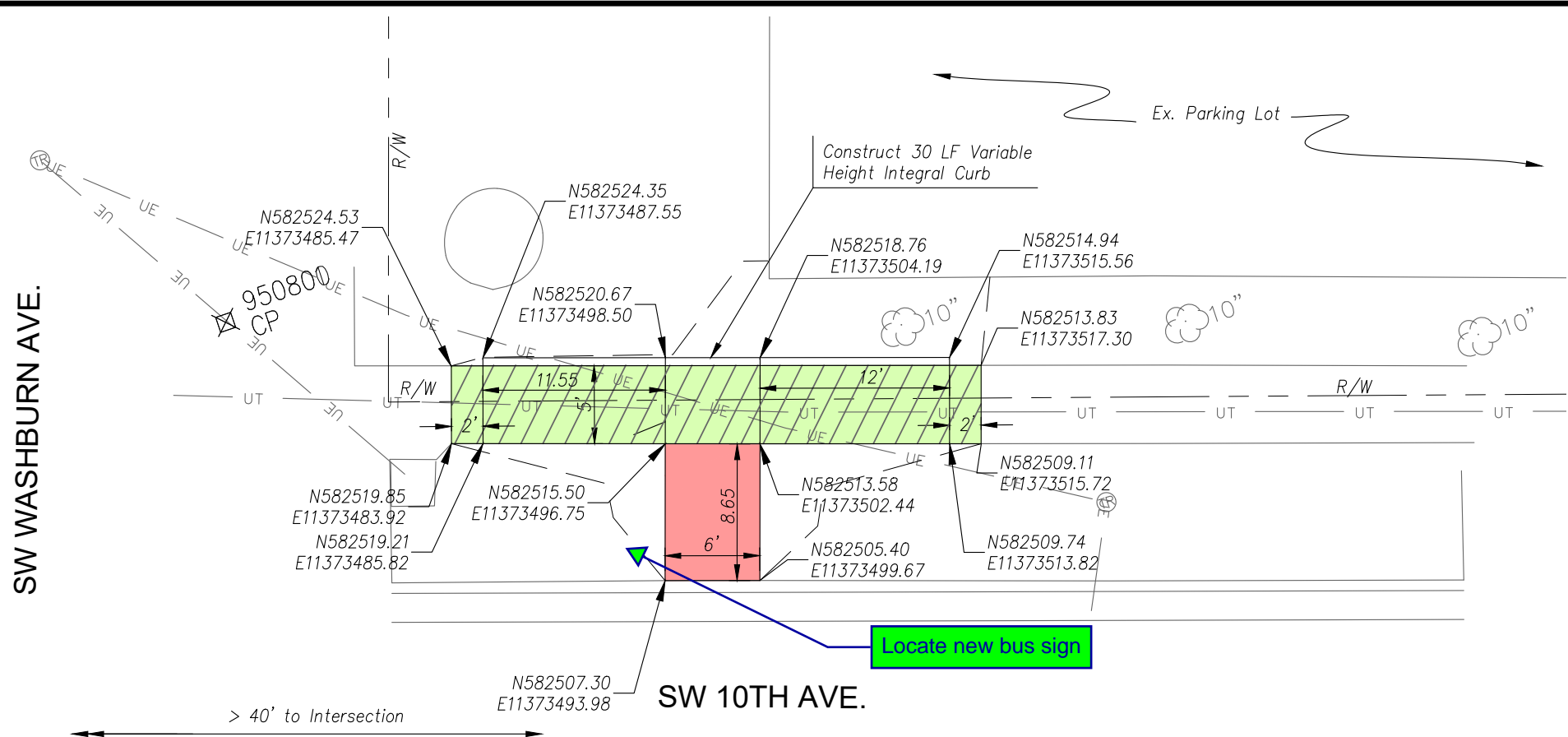
**CFS ENGINEERS**  
cfse.com 2930 SW Woodside Dr. Topeka, KS 66614  
o. 785-272-4700 f. 785-272-4730

NOTE: TMTA, Phase 9.5  
CFS PROJECT # 15-5044 DATE: 12/2/19  
PROJECT MANAGER: KH SHEET 1 OF 1

J:\2015Proj\155044 (2019 PH 9.5)\CADD\Design\155044base ph 9.5 sites 12-25.dwg, Washburn & 8th, 3/12/2021 4:42:04 PM

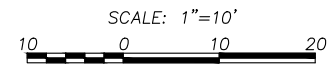
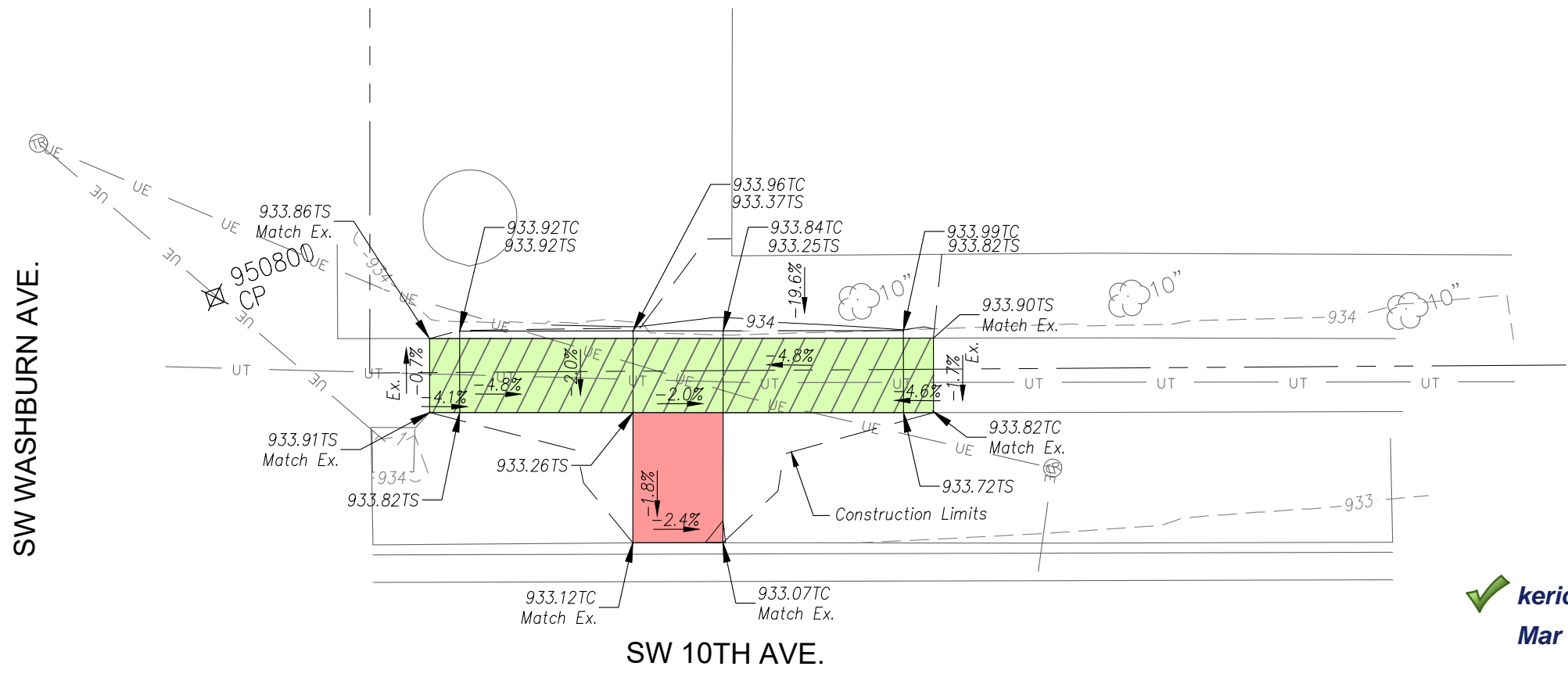
SW WASHBURN AVE.

SW WASHBURN AVE.



VICINITY MAP  
NO SCALE

- CONTROL:  
NAD 83 KRCS ZONE 11  
NAVD 88
- CP 950801 SET 1/2" REBAR W/CAP (CFS CONTROL)  
N: 582531.690 E: 11373472.822 EL: 933.83  
1) WEST SIDE N-S WALK 2.1' E  
2) NORTH EDGE E-W WALK 2.6' S  
3) NORTH EDGE E-W WALK @ EAST B/C WASHBURN AVE 13.3' W
- CP 950802 SET 1/2" REBAR W/CAP (CFS CONTROL)  
N: 582490.653 E: 11373565.420 EL: 933.75  
1) NORTH B/C 10TH AVE 7.0' S  
2) SOUTH EDGE E-W WALK 1.5' N  
3) TO LP 11.1' ESE



LEGEND

- Construct 5" Non-Reinforced Pad w/ 4" AB-3
  - Conc. Sidewalk Removal
  - Construct 4" Conc. Sidewalk
- TP Top of Pavement  
TS Top of Sidewalk

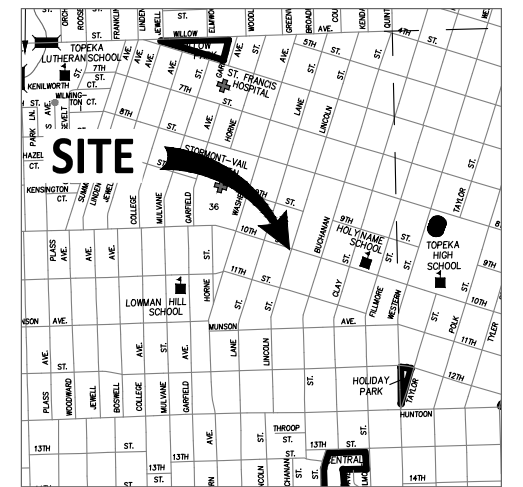
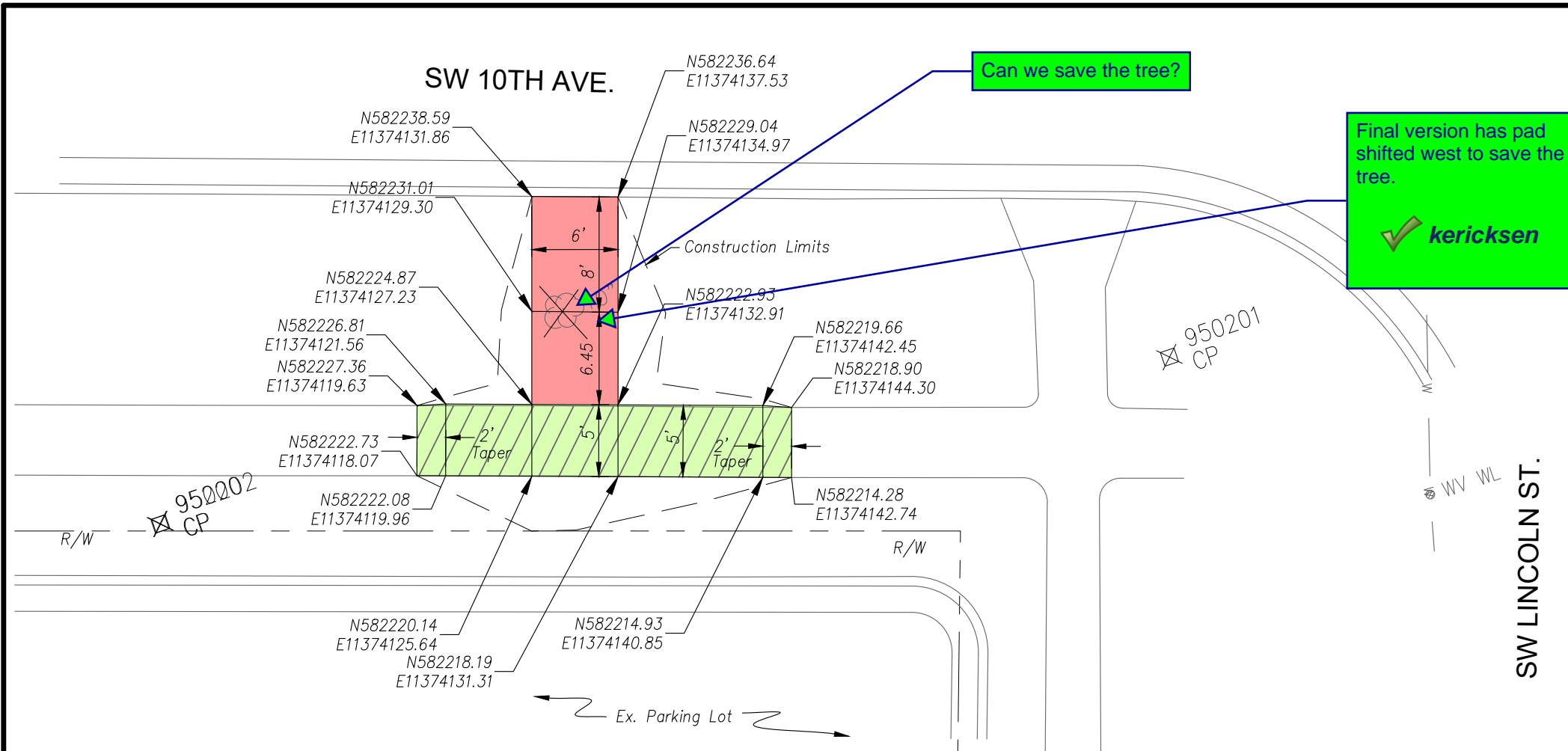
**kericksen**  
Mar 19, 2021

**SW 10th AVE. &  
SW WASHBURN AVE.  
(OB)(NE)  
(Standing Pad)**

<b>CFS ENGINEERS</b>	
cfse.com	2930 SW Woodside Dr. Topeka, KS 66614 o. 785-272-4705 f. 785-272-4739
NOTE: TMTA, Phase 9.5	
CFS PROJECT # 15-5044	DATE: 12/2/19
PROJECT MANAGER: KH	SHEET 1 OF 1

J:\2015Proj\155044 (2019 PH 9.5)\CADD\Design\155044base ph 9.5.dwg, 3/12/2021 4:41:03 PM

J:\2015Proj\155044 (2019 PH 9.5)\CADD\Design\155044base ph 9.5.dwg  
 J:\2015Proj\155044 (2019 PH 9.5)\CADD\Design\155044base ph 9.5.dwg, 10th & Lincoln, 3/12/2021 4:40:17 PM



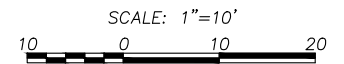
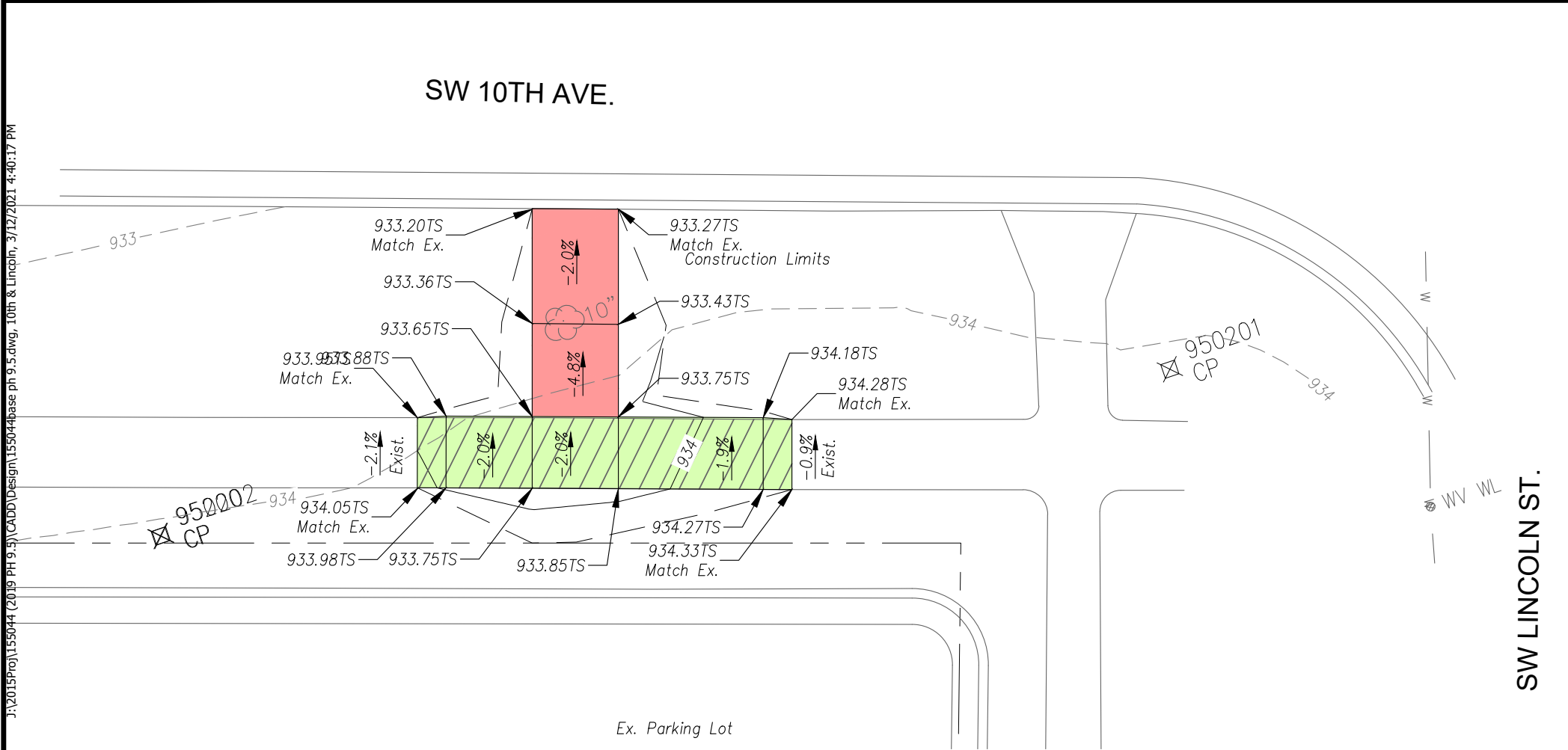
CONTROL:  
NAD 83 KRCS ZONE 11  
NAVD 88

CP 950201 SET 1/2" REBAR W/CAP (CFS CONTROL)  
N: 582213.817 E: 11374170.352 EL: 934.29

1) NORTH EDGE E-W WALK 3.5' S  
2) EAST EDGE N-S WALK 4.3' W  
3) SOUTH B/C 10TH AVE @ EAST EDGE N-S WALK 11.0' NNW

CP 950202 SET 1/2" REBAR W/CAP (CFS CONTROL)  
N: 582225.247 E: 11374100.097 EL: 934.06

1) SOUTH EDGE E-W WALK 3.3' N  
2) NORTH B/C PARKING LOT 3.5' S  
3) & LP 11.8' W



LEGEND

- Construct 5" Non-Reinforced Pad w/ 4" AB-3
- Conc. Sidewalk Removal
- Construct 4" Conc. Sidewalk
- Tree Removal

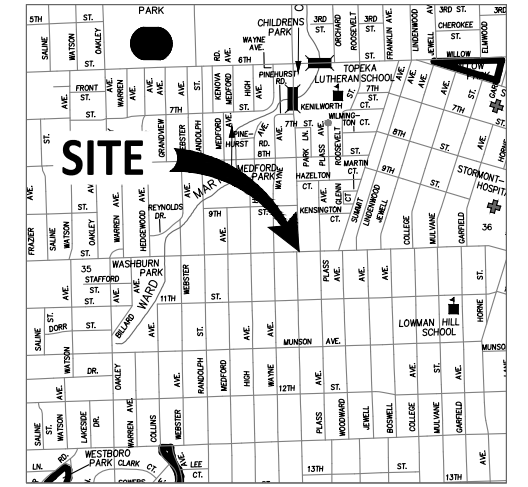
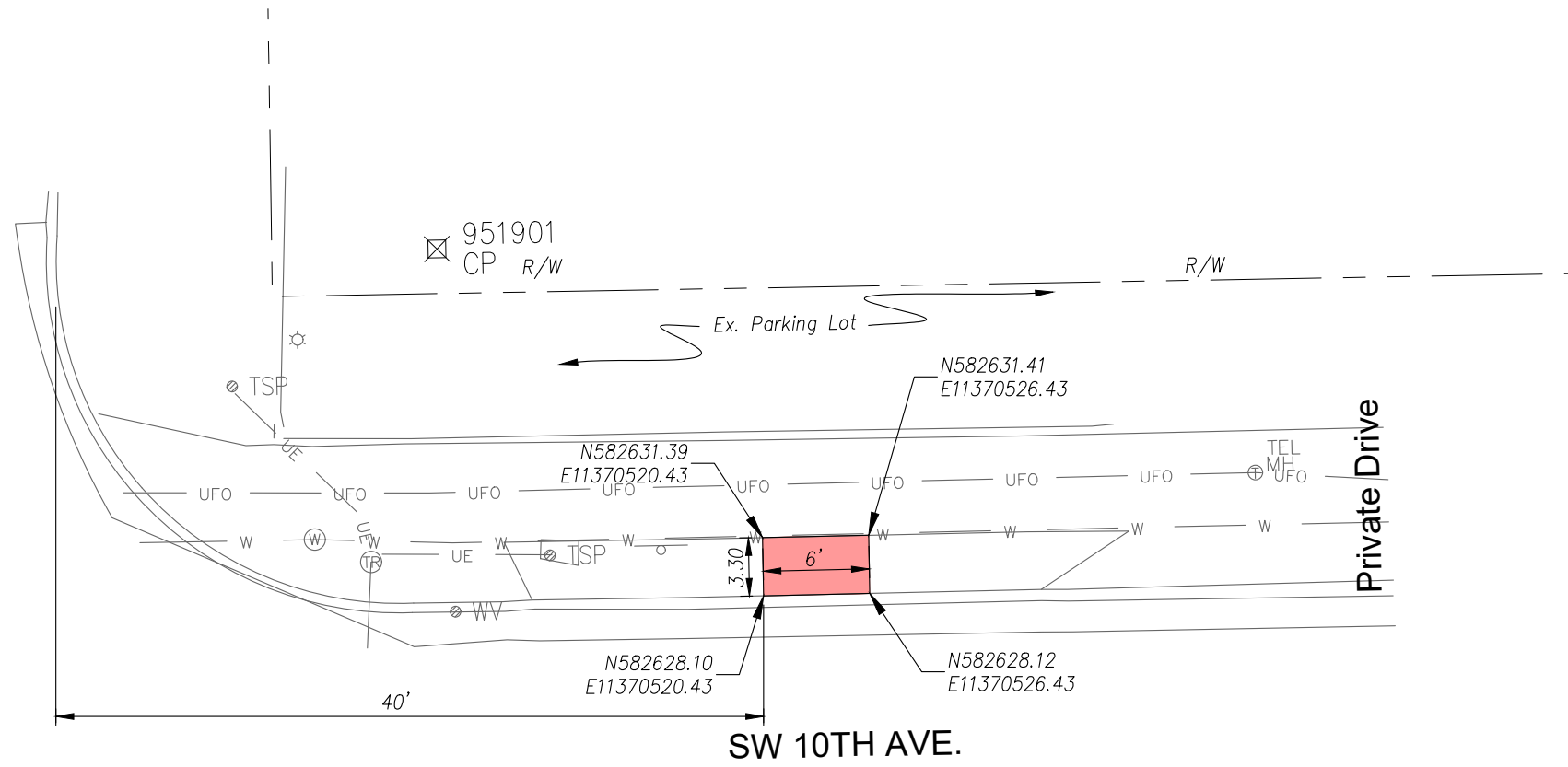
TP Top of Pavement  
TS Top of Sidewalk

Note:  
1. All grading side slopes shall be a 6:1 unless noted on plan.

<b>SW 10th AVE. &amp; SW LINCOLN ST. (IB)(SW)</b> (Standing Pad)		<b>CFS ENGINEERS</b> cfse.com 2930 SW Woodside Dr. Topeka, KS 66614 o. 785-272-4705 f. 785-272-4739
NOTE: TMTA, Phase 9.5 CFS PROJECT # 15-5044 PROJECT MANAGER: KH		
DATE: 12/2/19		SHEET 1 OF 1

J:\2015Proj\155044 (2019 PH 9.5)\CADD\Design\155044base ph 9.5 sites 12-25.dwg  
 J:\2015Proj\155044 (2019 PH 9.5)\CADD\Design\155044base ph 9.5 sites 12-25.dwg, 10th & MacVicar, 2/18/2021 10:02:10 AM

SW MACVICAR AVE.



VICINITY MAP  
NO SCALE

CONTROL:  
NAD 83 KRCS ZONE 11  
NAVD 88

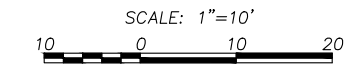
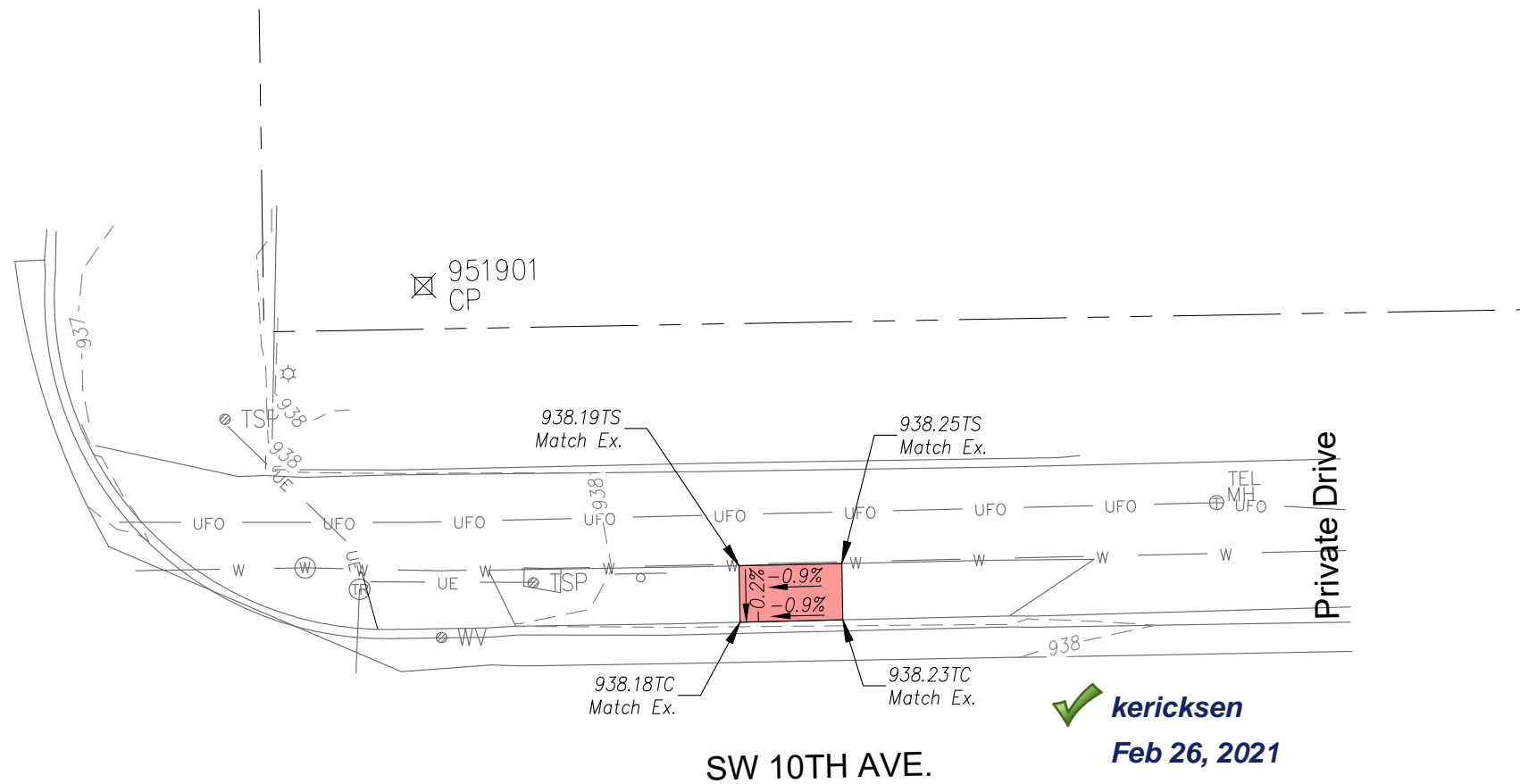
CP 951901 SET 1/2" REBAR W/CAP (CFS CONTROL)  
 N:582648.061 E:11370502.340 EL:938.15  
 1) CL 10TH ST  
 2) CL MACVICAR  
 3) EAST FACE LP

38.0' S  
37.0' W  
9.04' SW





CP 951902 SET 1/2" REBAR W/CAP (CFS CONTROL)  
 N:582746.519 E:11370488.583 EL:934.57  
 1) CL MACVICAR  
 2) CL SW ENTR TO PARKING LOT  
 3) SW FACE STEEL LP

22.0' W  
31.0' N  
12.12' NE

SW MACVICAR AVE.



LEGEND

-  - Construct Comb. Sidewalk & Retaining Wall
-  - Construct 5" Non-Reinforced Pad w/ 4" AB-3
-  - Conc. Sidewalk Removal
-  - Construct 4" Conc. Sidewalk

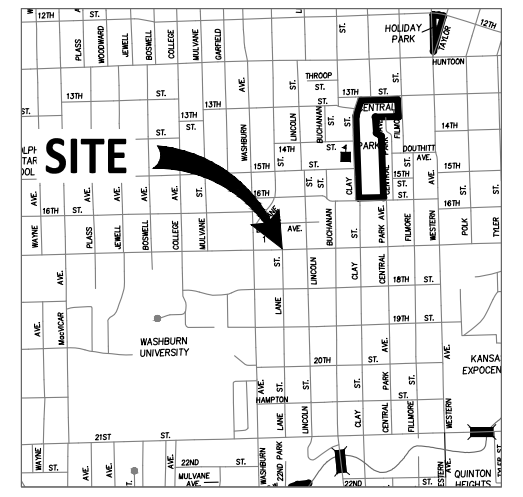
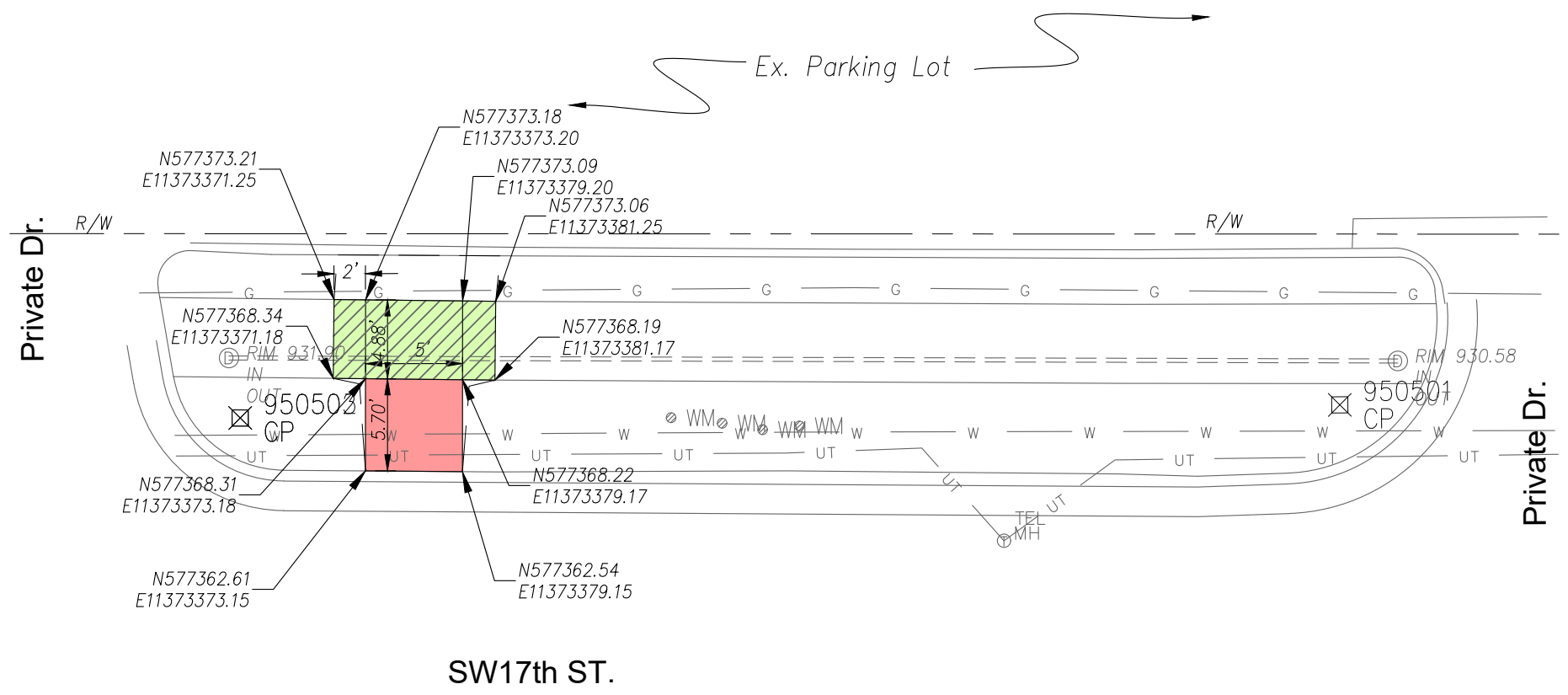
TP Top of Pavement  
TS Top of Sidewalk

Note:  
1. All grading side slopes shall be a 6:1 unless noted on plan.

 **kericksen**  
Feb 26, 2021

<b>SW 10th AVE. &amp; SW MACVICAR AVE. (OB)(NE)</b> (Standing Pad)		<b>CFS ENGINEERS</b> cfse.com 2930 SW Woodside Dr. Topeka, KS 66614 o. 785-272-4788 f. 785-272-4739
NOTE: TMTA, Phase 9.5		
CFS PROJECT # 15-5044	DATE: 12/2/19	PROJECT MANAGER: KH
		SHEET 1 OF 1

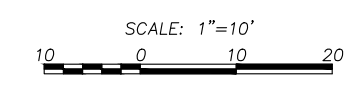
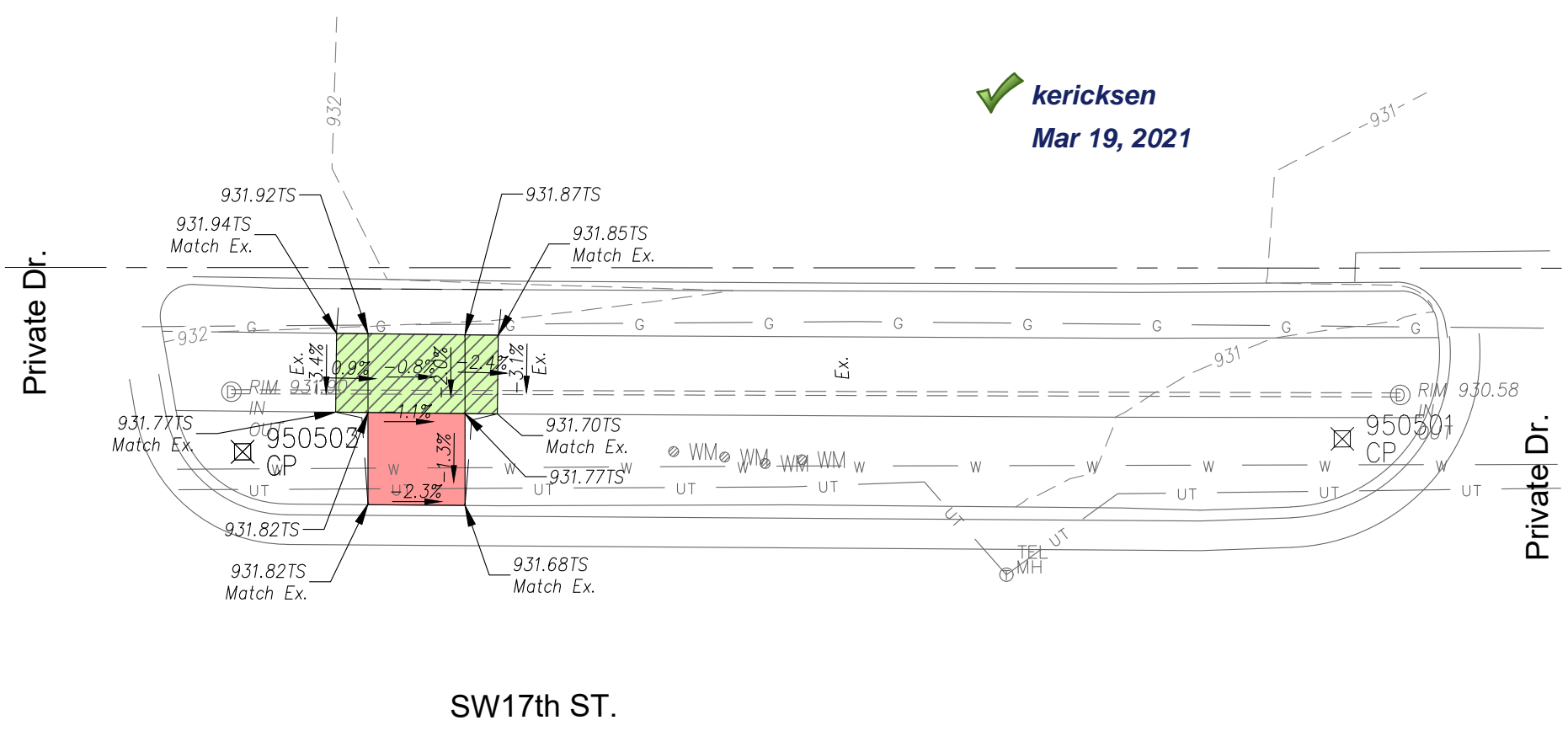
J:\2015Proj\155044 (2019 PH 9.5)\CADD\Design\155044base ph 9.5.dwg  
 J:\2015Proj\155044 (2019 PH 9.5)\CADD\Design\155044base ph 9.5.dwg, 17th & Lane, 3/12/2021 4:40:32 PM



CONTROL:  
 NAD 83 KRCS ZONE 11  
 NAVD 88

CP 950501 SET 1/2" REBAR W/CAP (CFS CONTROL)  
 N: 577366.428 E: 11373433.425 EL: 930.70  
 1) SOUTH EDGE E-W WALK 1.3' N  
 2) 4" MH 4.3' NE  
 3) SOUTH EDGE E-W WALK @ B/C 5.0' ENE

CP 950502 SET 1/2" REBAR W/CAP (CFS CONTROL)  
 N: 577365.910 E: 11373365.413 EL: 931.88  
 1) SOUTH EDGE E-W WALK 2.4' N  
 2) SOUTH EDGE WALK @ B/C 4.5' NW  
 3) 4" MH



LEGEND

- Construct Reinforced Conc. Pad
- Construct 5" Non-Reinforced Pad w/ 4" AB-3
- Conc. Sidewalk Removal
- Construct 4" Conc. Sidewalk

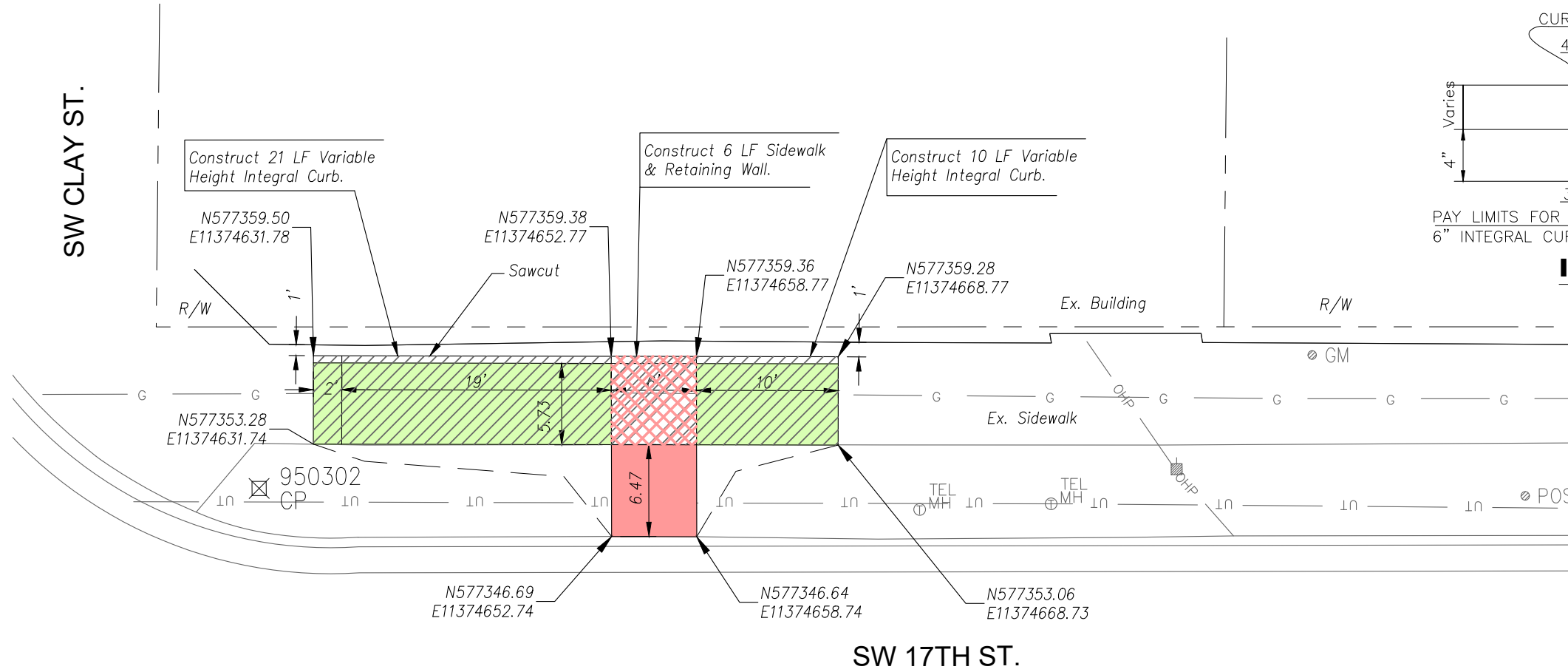
TP Top of Pavement  
 TS Top of Sidewalk

Note:  
 1. All grading side slopes shall be a 6:1 unless noted on plan.

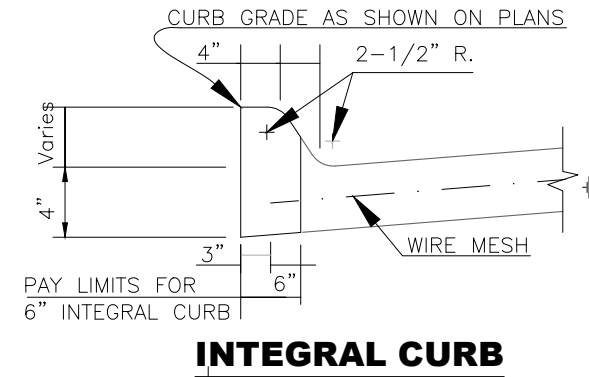
<b>SW 17th ST. &amp; SW LANE ST. (OB)(NW)</b> (Standing Pad)		<b>CFS ENGINEERS</b> cfse.com 2930 SW Woodside Dr. Topeka, KS 66614 o. 785-272-4705 f. 785-272-4739
NOTE: TMTA, Phase 9.5		
CFS PROJECT # 15-5044	DATE: 12/2/19	
PROJECT MANAGER: KH	SHEET 1 OF 1	



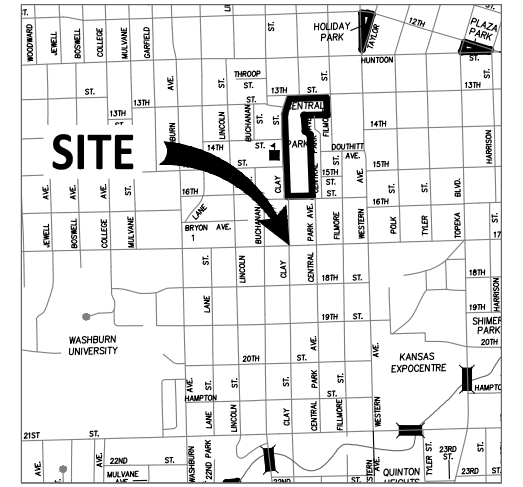
SW CLAY ST.



SW 17TH ST.



**INTEGRAL CURB**



VICINITY MAP  
NO SCALE

CONTROL:  
NAD 83 KRCS ZONE 11  
NAVD 88

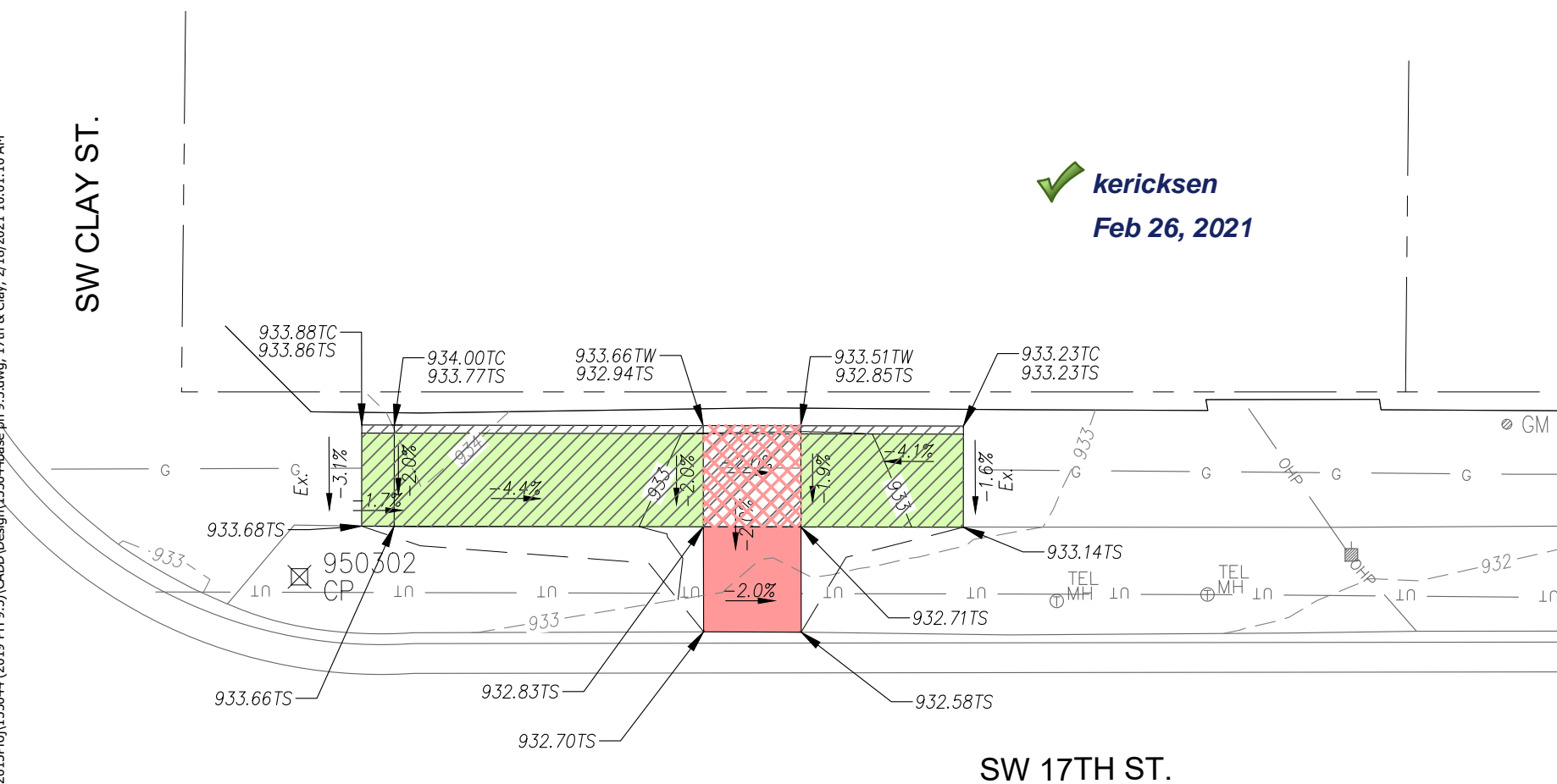
CP 950301 SET 1/2" REBAR W/CAP (CFS CONTROL)  
N:577347.784 E:11374725.206 EL:931.15

- 1) NORTH B/C 17TH ST 1.4' S
- 2) SOUTH EDGE E-W WALK 5.1' N
- 3) WASHBURN UNIV SGN POST 8.1' W

CP 950302 SET 1/2" REBAR W/CAP (CFS CONTROL)  
N:577350.176 E:11374627.908 EL:933.39

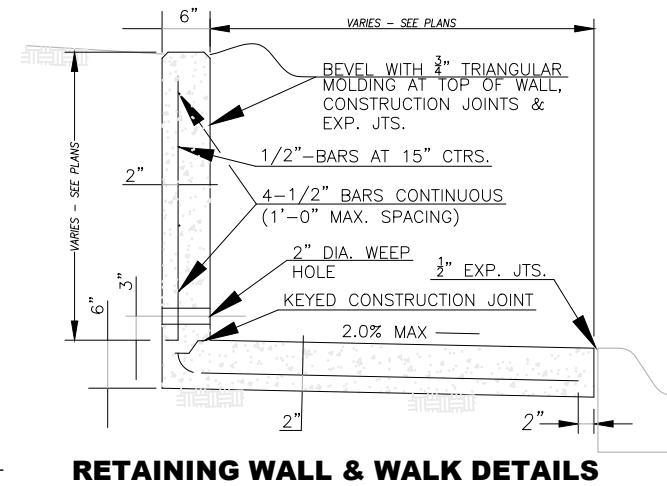
- 1) NORTH B/C 17TH ST @ EAST SIDE WALK 4.7' SW
- 2) SOUTH SIDE WALK @ PI E-SW 3.2' N
- 3) NORTH B/C 17TH ST 2.8' S

SW CLAY ST.



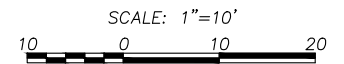
SW 17TH ST.

✓ kericksen  
Feb 26, 2021



**RETAINING WALL & WALK DETAILS**

NOTE:  
▶ THIS TYPE OF WALL MAY BE USED TO A MAXIMUM HEIGHT OF 3'-0".  
▶ WEEP HOLES AT A MAXIMUM OF 15' CENTER TO CENTER WITH COARSE AGGREGATE PLACED AT EACH WEEP HOLE 18" IN ALL DIRECTIONS ABOVE FLOW LINE.  
▶ CONCRETE SHALL BE CLASS "A" THROUGHOUT WITH GRADE 40 REINFORCING.  
▶ PLACE 1/2" HARDWARE SCREEN AT WEEP HOLES TO RETAIN AGGREGATE.



SCALE: 1"=10'

LEGEND

- Construct Reinforced Conc. Pad
- Construct 5" Non-Reinforced Pad w/ 4" AB-3
- Conc. Sidewalk Removal
- Construct 4" Conc. Sidewalk

TP Top of Pavement  
TS Top of Sidewalk  
TW Top of Wall

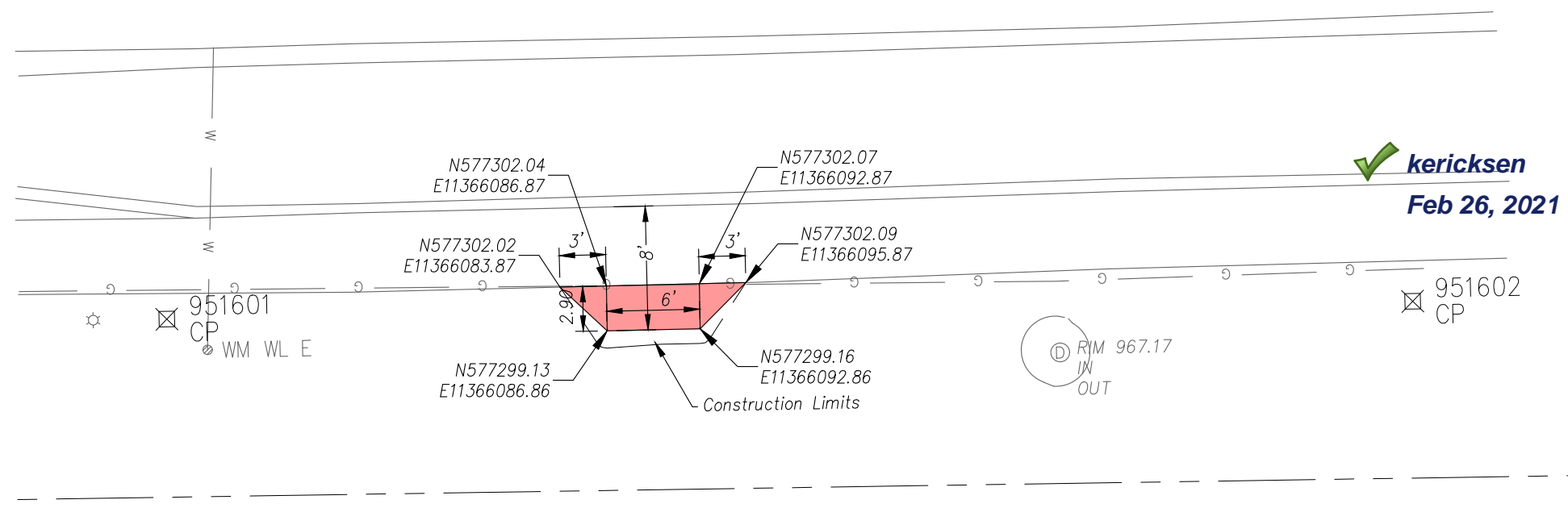
Note:  
1. All grading side slopes shall be a 6:1 unless noted on plan.

<b>SW 17th ST. &amp; SW CLAY ST. (OB)(NE)</b> (Standing Pad)		<b>CFS ENGINEERS</b> cfse.com 2930 SW Woodside Dr. Topeka, KS 66614 o. 785-272-4700 f. 785-272-4730
NOTE: TMTA, Phase 9.5	CFS PROJECT # 15-5044	
PROJECT MANAGER: KH		SHEET 1 OF 1

J:\2015Proj\155044 (2019 PH 9.5)\CADD\Design\155044base ph 9.5.dwg  
J:\2015Proj\155044 (2019 PH 9.5)\CADD\Design\155044base ph 9.5.dwg, 17th & Clay, 2/18/2021 10:01:10 AM

J:\2015Proj\155044 (2019 PH 9.5)\CADD\Design\155044base ph 9.5 sites 12-25.dwg  
 J:\2015Proj\155044 (2019 PH 9.5)\CADD\Design\155044base ph 9.5 sites 12-25.dwg, 17th & Arnold, 2/18/2021 10:01:49 AM

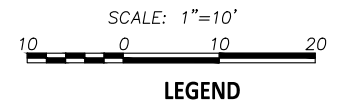
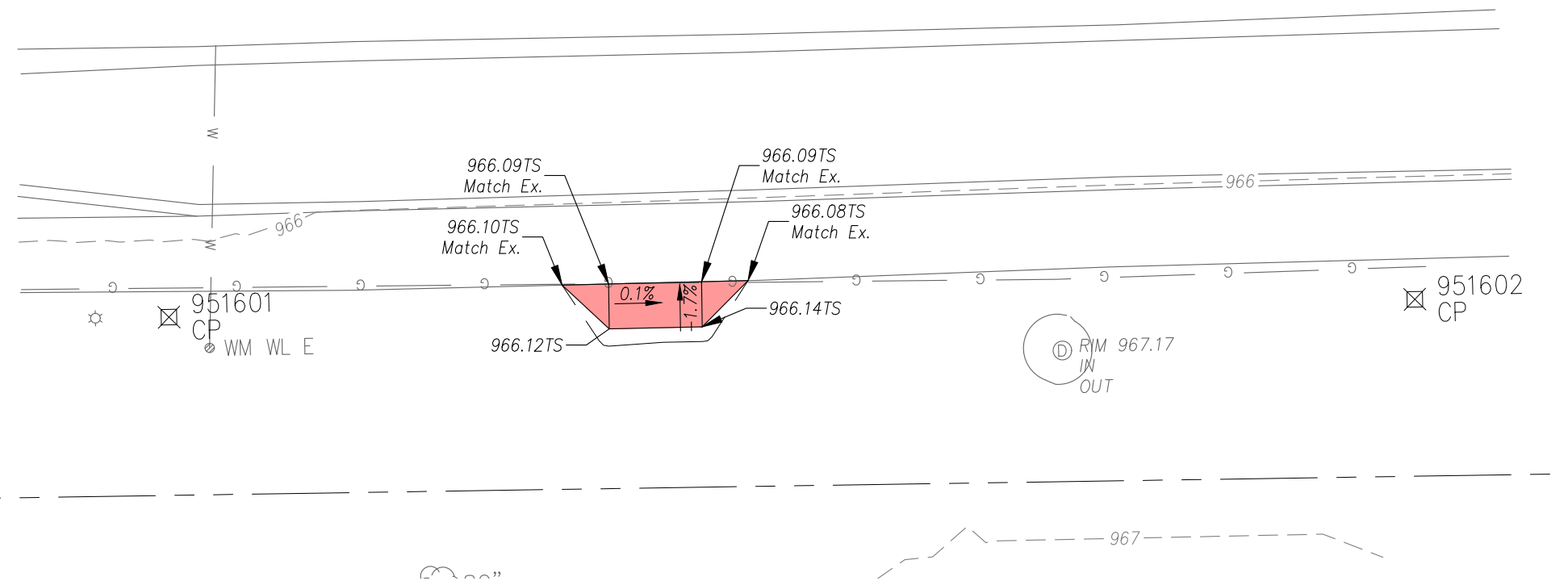
SW 17TH ST.



VICINITY MAP  
NO SCALE

- CONTROL:  
NAD 83 KRCS ZONE 11  
NAVD 88
- CP 951601 SET 1/2" REBAR W/CAP (CFS CONTROL)  
N: 577300.433 E: 11366058.461 EL: 966.28  
1) SOUTH EDGE WALK SOUTH SIDE 17TH 1.59' N  
2) EAST FACE LP 4.46' W  
3) B/C PI E-WNW 6.75' NNE
- CP 951602 SET 1/2" REBAR W/CAP (CFS CONTROL)  
N: 577300.060 E: 11366138.875 EL: 966.65  
1) SOUTH EDGE WALK SOUTH SIDE 17TH 2.7' N  
2) C SWMH 23.18' WSW  
3) C ENTR @ CROSSWALK LIGHT 73.0' E

SW 17TH ST.



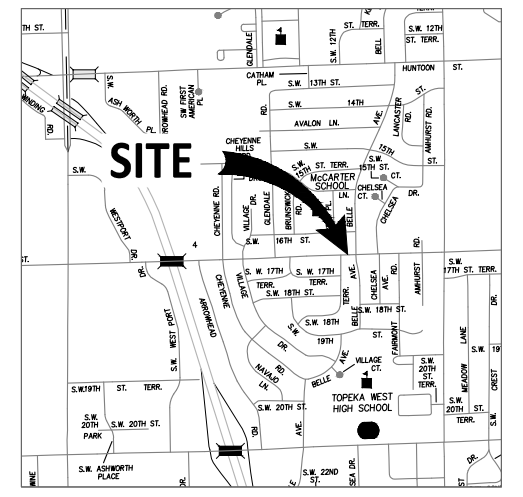
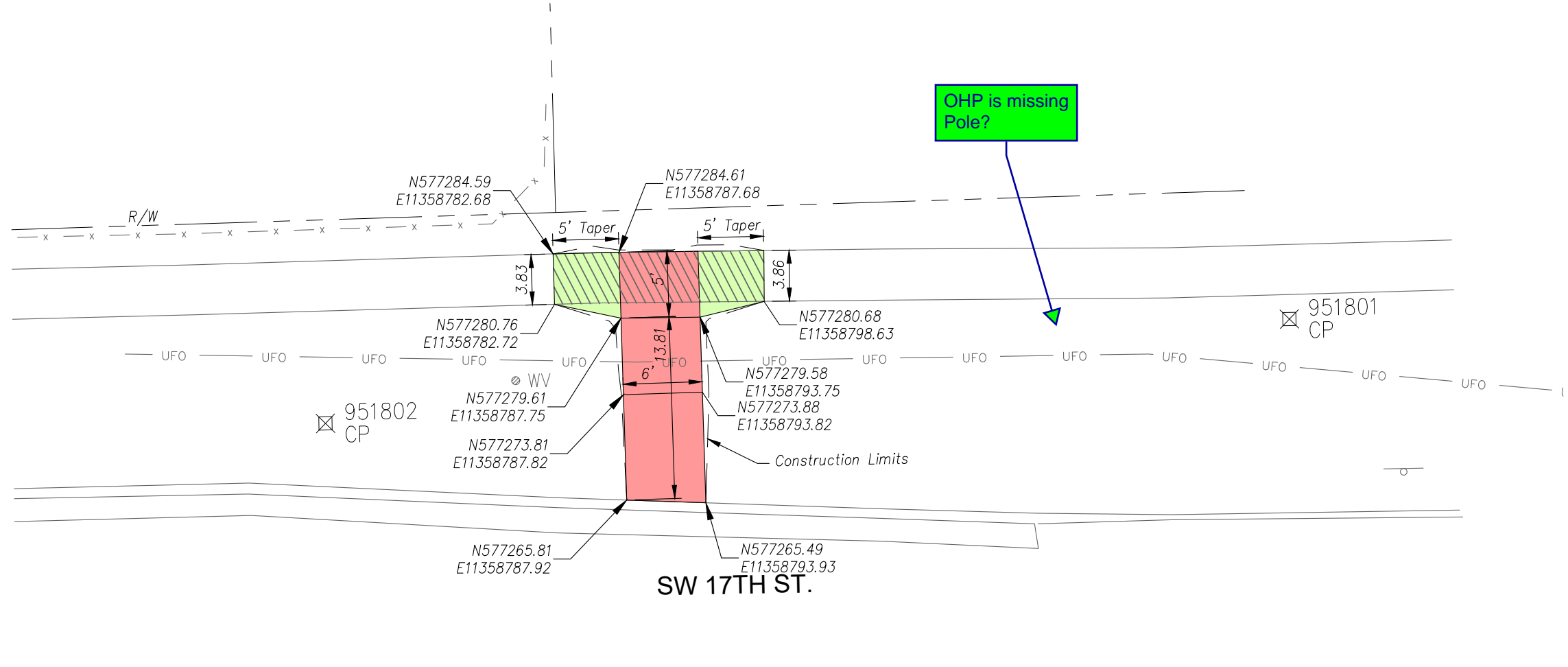
SCALE: 1"=10'

LEGEND

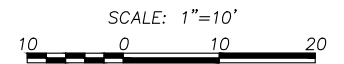
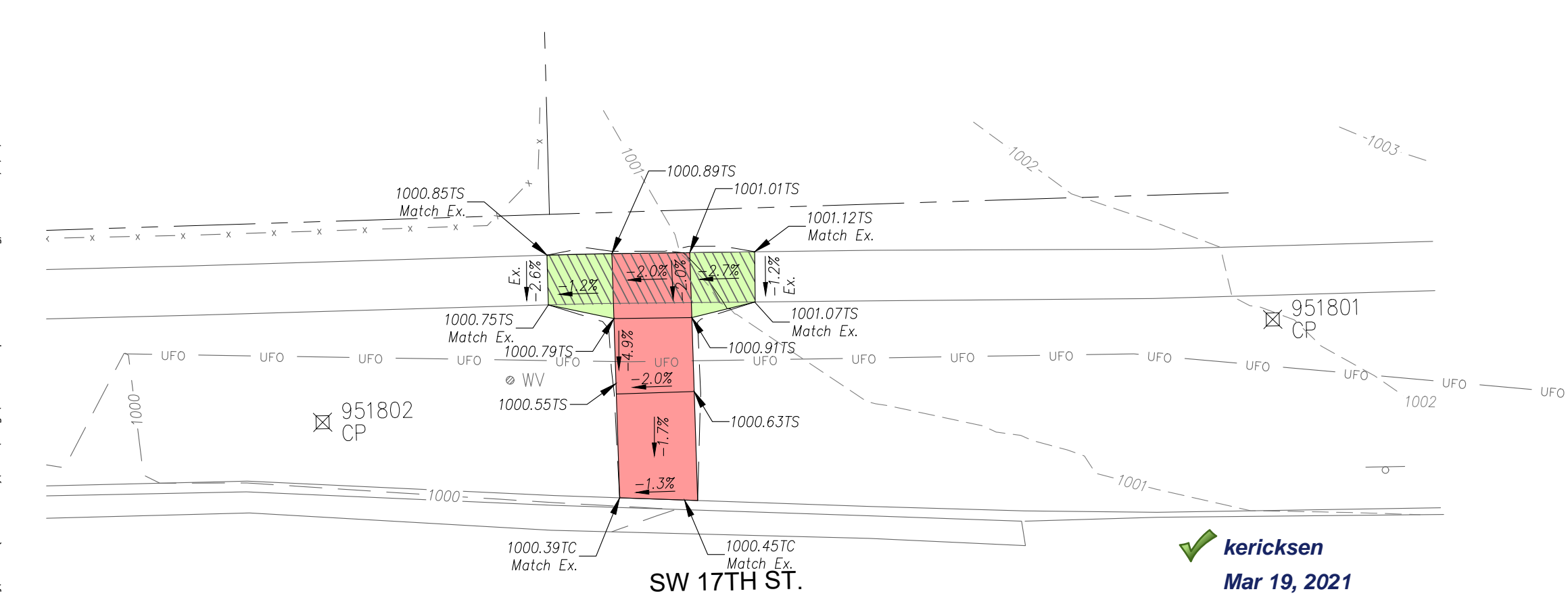
- Construct Comb. Sidewalk & Retaining Wall
  - Construct 5" Non-Reinforced Pad w/ 4" AB-3
  - Conc. Sidewalk Removal
  - Construct 4" Conc. Sidewalk
- TP Top of Pavement  
TS Top of Sidewalk

Note:  
1. All grading side slopes shall be a 6:1 unless noted on plan.

<b>SW 17th ST. &amp; SW ARNOLD AVE. (IB)(MBS) (STONE) (Standing Pad)</b>		<b>CFS ENGINEERS</b> cfse.com 2930 SW Woodside Dr. Topeka, KS 66614 o. 786-272-4700 f. 786-272-4730
NOTE: TMTA, Phase 9.5		
CFS PROJECT # 15-5044	DATE: 12/2/19	
PROJECT MANAGER: KH	SHEET 1 OF 1	



- CONTROL:  
NAD 83 KRCS ZONE 11  
NAVD 88
- CP 951801 SET 1/2" REBAR W/CAP (CFS CONTROL)  
N: 577278.585 E: 11358838.486 EL: 1002.13  
1) B/C NORTH SIDE 17TH ST 15.02' S  
2) SE COR LIP @ END C & G 25.77' SW  
3) EAST FACE PP 47.55' W
- CP 951802 SET 1/2" REBAR W/CAP (CFS CONTROL)  
N: 577272.055 E: 11358765.162 EL: 1000.51  
1) B/C NORTH SIDE 17TH ST 5.05' S  
2) WEST FACE PP 24.98' ENE  
3) 6' WOOD FEN PI W-NE 19.75' NE



LEGEND

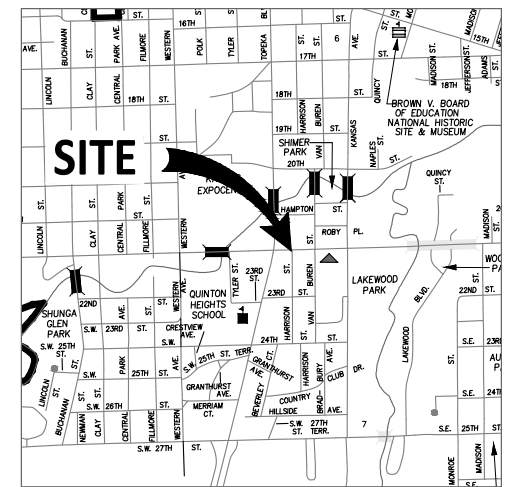
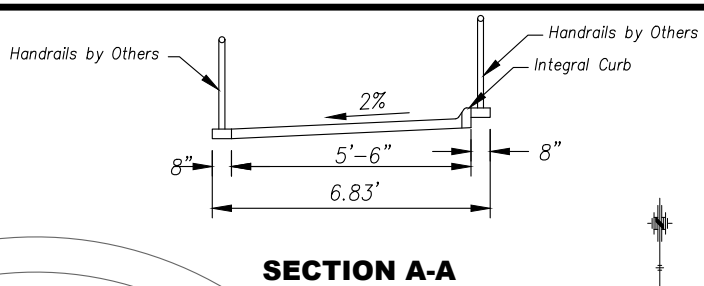
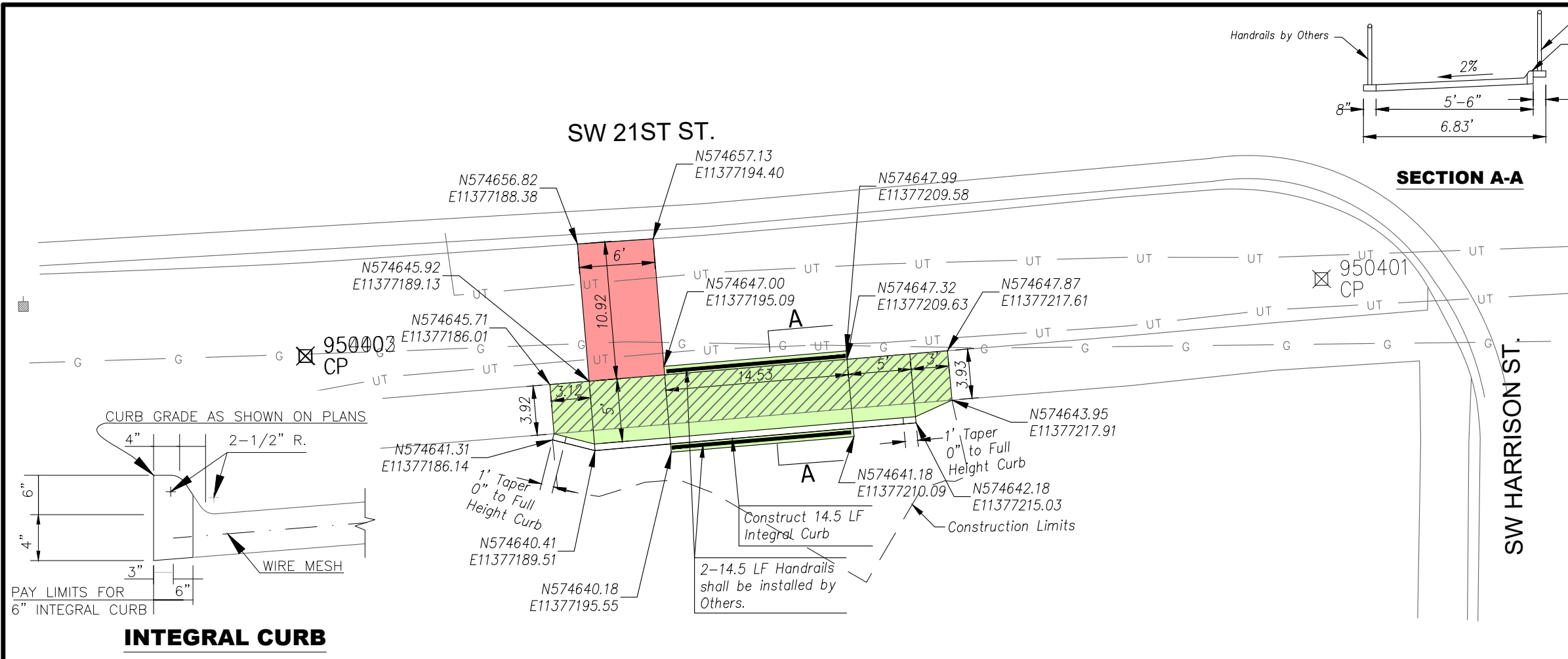
- Construct Comb. Sidewalk & Retaining Wall
- Construct 5" Non-Reinforced Pad w/ 4" AB-3
- Conc. Sidewalk Removal
- Construct 4" Conc. Sidewalk

TP Top of Pavement  
TS Top of Sidewalk

Note:  
1. All grading side slopes shall be a 6:1 unless noted on plan.

<b>SW 17th ST. &amp; SW BELLE AVE. (OB)(MBN)</b> (Standing Pad)		<b>CFS ENGINEERS</b> cfse.com 2930 SW Woodside Dr. Topeka, KS 66614 o. 786-272-4705 f. 786-272-4739
NOTE: TMTA, Phase 9.5		
CFS PROJECT # 15-5044	DATE: 12/2/19	
PROJECT MANAGER: KH	SHEET 1 OF 1	

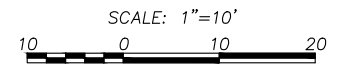
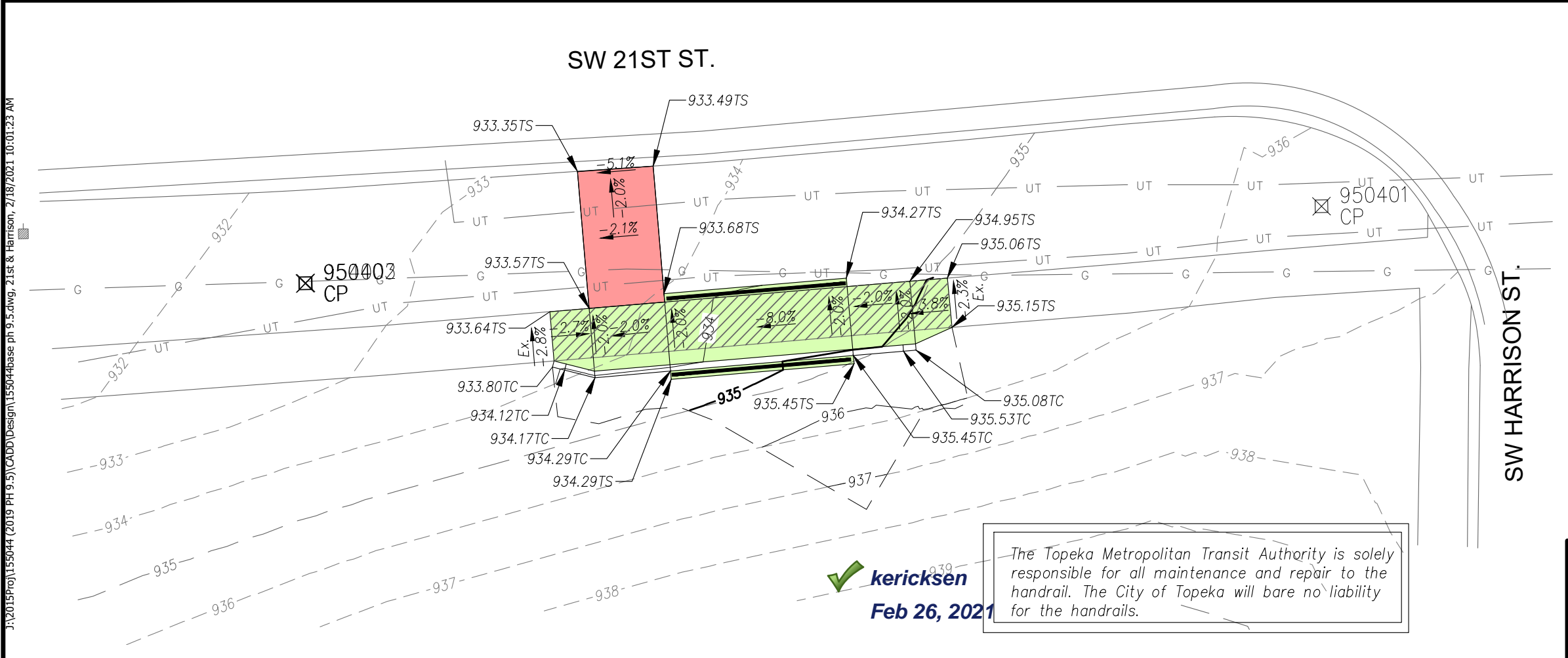
J:\2015Proj\155044 (2019 PH 9.5)\CADD\Design\155044base ph 9.5 sites 12-25.dwg  
J:\2015Proj\155044 (2019 PH 9.5)\CADD\Design\155044base ph 9.5 sites 12-25.dwg, 17th & Belle, 3/12/2021 4:42:24 PM



CONTROL:  
NAD 83 KRCS ZONE 11  
NAVD 88

CP 950401 SET 1/2" REBAR W/CAP (CFS CONTROL)  
N: 574653.071 E: 11377247.398 EL: 936.36  
1) NORTH EDGE E-W WALK 3.0' S  
2) B/C NEAR CEN RETURN 5.2' NE  
3) ☉ HARRISON TO SOUTH 24.0' E

CP 950402 SET 1/2" REBAR W/CAP (CFS CONTROL)  
N: 574648.302 E: 11377166.646 EL: 932.70  
1) SOUTH B/C SW 21ST ST 7.4' N  
2) NORTH EDGE E-W WALK 3.8' S  
3) TO POWER POLE 22.0' WNW



- LEGEND**
- Construct Reinforced Conc. Pad
  - Construct 5" Non-Reinforced Pad w/ 4" AB-3
  - Conc. Sidewalk Removal
  - Construct 4" Conc. Sidewalk
- TP Top of Pavement  
TS Top of Sidewalk

Note:  
1. All grading side slopes shall be a 6:1 unless noted on plan.

**kericksen**  
Feb 26, 2021

The Topeka Metropolitan Transit Authority is solely responsible for all maintenance and repair to the handrail. The City of Topeka will bare no liability for the handrails.

**SW 21st St. & SW HARRISON ST. (IB)(SW)**  
(Standing Pad)

**CFS ENGINEERS**  
cfse.com 2930 SW Woodside Dr. Topeka, KS 66614  
☎ 785-372-4705 f. 785-372-4739

NOTE: TMTA, Phase 9.5  
CFS PROJECT # 15-5044 DATE: 12/2/19  
PROJECT MANAGER: KH SHEET 1 OF 1

J:\2015Proj\155044 (2019 PH 9.5)\CADD\Design\155044base ph 9.5.dwg  
J:\2015Proj\155044 (2019 PH 9.5)\CADD\Design\155044base ph 9.5.dwg, 2.1st & Harrison, 2/18/2021 10:01:23 AM